



Superior & Douglas County WISCONSIN

OFFICIAL 2021 TRAVEL AND ACTIVITIES GUIDE

TRAVEL
Superior
.ORG

CONTENTS

TRAVEL
Superior
.ORG

History and Heritage	Page 4
Wisconsin Point Map & Information	Page 6 & 7
City of Superior Map	Page 8
Where to Play	Pages 9 & 10
12 Things to Do Under \$12	Page 11
Where to Shop	Pages 12 - 14
Where to Eat & Drink	Pages 15 & 16
Where to Sleep	Pages 17 & 18
Camping	Page 19
Events	Page 20
Parks & Forests	Pages 21-23
Recreation Trails	Pages 24-25
ATV & Snowmobile Trails	Page 27
Winter Recreation	Pages 28 & 29
Douglas County Map	Page 30
Our Communities	Page 31
Emergency Contacts	Page 32
Visit Our Neighbors	Pages 32
Photography Credits	Page 33
Chamber Member List	Pages 34 & 35

CONTACT US!

Welcome Center

Stop by the Superior-Douglas County Welcome Center, an official Travel Wisconsin Welcome Center! Located in the Richard I. Bong Veterans Historical Center at 305 Harbor View Parkway in Superior. We have visitor guides, brochures, rack cards, maps, and other information on attractions in Superior, Douglas County, Northwestern Wisconsin, and beyond!

By mail

Superior-Douglas County Welcome Center
305 Harbor View Parkway
Superior, WI 54880

Superior-Douglas County Chamber/
Travel Superior
205 Belknap Street
Superior, WI 54880

By phone

Welcome Center: (715) 392-2773 or
(800) 942-5313
Travel Superior:
(715) 394-7716

Online

TravelSuperior.org
vacation@superiorchamber.org

Get Social!



Facebook.com/TravelSuperior



@TravelSupWI



@TravelSupWI



Pinterest.com/visitdouglasco/

WELCOME!

"We welcome you to Superior and Douglas County! You'll enjoy our authentic food beverage options, unique businesses, and wonderful lodging properties while taking in all that northwest Wisconsin has to offer. We know all of our amazing hospitality businesses will help make your vacation one to remember."

- Taylor Pedersen, President and CEO of Travel Superior

"With over 280,000 acres of county owned scenic north woods beauty, Douglas County and its forests truly are a Wisconsin gem. There are countless ways to experience our regions natural beauty whether through ATV/UTVing, fishing, hunting, horseback riding, biking, hiking, snowmobiling, cross country skiing, and so much more. Welcome to Douglas County!"

- Mark Liebaert, Douglas County Board Chair

"Welcome! Built on a rich heritage of utilizing our woods and water, I welcome you to enjoy many of those same spaces that our citizens and visitors still love today. From world class trails and parks to fun shops and a thrilling nightlife, we are glad you are here and hope you enjoy your stay! "

- Jim Paine, Mayor, City of Superior



Escape to the Island
300 Marina Drive | Superior, WI
barkersislandinn.com | 715-392-7152

BARKERS
WATERFRONT GRILL

BARKERS
ISLAND INN



Hampton Inn
Canal Park Duluth

- Located on the Lakewalk in historic Canal Park
- Lakeside rooms with fantastic views
- Close to Dining, Shopping, and Attractions
- Free High-Speed Internet
- Complimentary "On the House®" Hot Breakfast
- Indoor Pool / Whirlpool / Fitness Center
- Refrigerators and Microwaves in all rooms
- Earn Hilton Honors Points/Miles

1-800-426-7866
218-720-3000, 310 Canal Park Drive, Duluth, MN
www.duluthmn.hamptoninn.com



HISTORY AND HERITAGE

From the early Native Americans to a history rich with shipping and industry — like the story of northern Wisconsin, Douglas County's heritage is a mosaic of culture, history, nature, and commerce.

The first-known inhabitants of Douglas County were Mound Builders, an advanced group of people that mined copper in the Minong Range and at Manitou Falls on the Black River.

In 1618, Stephen Brule', a French voyager for Champlain, coasted along the south shore of Lake Superior and the Ojibwa people. In 1632, Champlain's map appeared showing "Lac Superior de Tracy" as Lake Superior and the lower end shore as "Fond du Lac." Soon after, fur trading companies established settlements. For more than a century, the Hudson Bay Company, the Northwestern Fur Company, and the John Jacob Aster Fur Company maintained trading posts with the Native Americans.

Soon, the entire Wisconsin Territory grew with a steady influx of immigrants from England, Scandinavia, Ireland, and Germany. In 1848, Wisconsin became the 30th state to join the Union.

Helping to spur the growth of northern Wisconsin, Douglas County

lies on one of the major water highways used by early travelers and voyagers of inland America. This water trail, the Bois Brule-St. Croix River Portage Trail, was the most convenient connecting link between Lake Superior and the Mississippi River.

Spurred by the prospect of a lucrative shipping and iron ore industry, businessmen from Chicago and St. Paul laid claim to the Superior site and plans began for the plotting of a great city. Immediately there was eagerness for a railroad from Lake Superior to the Pacific Coast. This was later solidified with construction of the Northern Pacific, and the dream of a rail and water highway from coast to coast was born.

In 1889, the booming settlement at the Head of the Lakes

would soon be named the county seat for Wisconsin's fourth-largest county. Named for Senator Stephen A. Douglas of Illinois, famed opponent of Abraham Lincoln, Douglas County would hold pride in its largest city, Superior, and money was pumped into the city's shipping and railway industries. That pride continues even today.

We have many attractions that pay homage to our rich history. For historical attractions in Superior and Douglas County, see page 9.



The 35 Carl Gawboy Murals located at the Superior Public Library tell Superior & Douglas County's History. There are also 14 other murals located across Superior! Can you find them?



HEAVY METAL TOURS

RETURN THIS SUMMER!



P-38 & M-60 Experience

Get Up Close with the Fighter & Tank!



New Exhibit

Featuring the Korean & Vietnam Wars

TOUR TODAY!

Hours Mon-Sat: 9AM - 5PM

Sun: 12PM - 5PM

Special off-hour tours available upon request.

RICHARD I.
BONG

VETERANS HISTORICAL CENTER

BongCenter.org | 715-392-7151 | 305 Harbor View Pkwy – Superior, WI

SUPERIOR'S **BEST** MUSEUM – THE NORTHLAND'S **BEST** STORIES



WISCONSIN POINT

There are fewer freshwater lakes as beautiful and moving as Lake Superior. One of Douglas County's finest features, Lake Superior is a source of economic vitality and recreation, and is home to a wide variety of wildlife.

The greatest of the Great Lakes, Lake Superior is the world's largest freshwater lake by surface area. Lake Superior is so vast that it contains 10 percent of all the Earth's fresh surface water and as much water as all the other Great Lakes combined.

But Lake Superior is more than just a whole lot of water — it's a place to enjoy swimming, boating, kayaking, fishing, and outdoor recreation. The beauty, power, and vastness of Lake Superior have inspired songwriters, poets, artists, writers, and photographers.

Stroll along beaches, experience a south shore sunset, wade in the waters and search for skipping stones, or just take in the wildlife. You'll understand exactly what we mean when we say that Lake Superior is an experience for all of your senses.

Barker's Island Festival Park and Marina

Located on Marina Drive in the City of Superior, Barker's Island Festival Park features a playground, band shell pavilion, walking paths, swimming, and more.

Barker's Island also has a marina complete with a service center and plenty of amenities. Barker's Island provides easy access to the waters of Superior Bay and the St. Louis River, as well as the many boating opportunities on Lake Superior.

Beaches

Superior and Douglas County are home to beaches on the south shore of Lake Superior. By far the most popular Lake Superior beach area in Douglas County is Wisconsin Point, less than 10 minutes from Superior's downtown!

See page 7 for a beach map and for more information on enjoying Wisconsin Point.

Boat Launches

The City of Superior has four boat launch facilities located on the Superior Bay and the St. Louis River:

- Arrowhead - west end of Su-

perior at the end of Belknap Street

- North 21st Street - west end of Superior off 21st Street
- Barker's Island - off Highway 2 and Marina Drive
- Loon's Foot Landing - off Highway 2/53 on 30th Avenue East
- Kayak Launch (primitive only) at Woodstock Bay, end of North 28th Street.

Resident and non-resident boat launch fees apply. Annual and daily permits are available. Daily permits are sold at launch sites for \$5. When launches are open, annual permits are sold at

- Barker's Island Marina Ship's Store at 250 Marina Drive
- Kwik Trip at 3027 East Second Street
- Northwest Outlet at 1814 Belknap Street
- Parks and Recreation office at 1316 North 14th Street, 2nd floor.

Fish Cleaning Stations are located at Barker's Island and Loon's Foot Landing.

For more information on boat launches please call the Parks and Recreation hot line at (715) 395-7299.



About Wisconsin Point

Wisconsin Point, along with Minnesota Point, make up the largest freshwater sandbar in the world. Wisconsin Point Road is accessible via Moccasin Mike Road off of US Highway 2/53 just on the eastern edge of the City of Superior. The Point is made up of 229 acres with 2 3/4 miles of beach — perfect for walking, swimming, wildlife viewing, photography, and more.

Fun fact: Wisconsin Point was voted “Best Sandy Beach Swimming” in the “Best of the Lake 2018” voting contest by Lake Superior Magazine.

In 2019, the City of Superior added handicap accessible boardwalks and bathrooms.

Superior Entry Lighthouse

The Superior Entry Lighthouse has been on Wisconsin Point since 1913. Though it's not open for tours, the lighthouse is one of the most highly photographed landmarks in Superior and Douglas County, and is a must-visit for lighthouse enthusiasts! Find shipping information at www.harborlookout.com.

Rules and Regulations

Please be sure to follow all rules and regulations to help preserve Wisconsin Point!

- Motor vehicle traffic and parking is prohibited between the hours of 11 p.m. and 4 a.m. on Wisconsin Point Road, including any parking areas, beyond Lot #1, except during

the spring smelt run season as defined by the Parks and Recreation Department.

- Glass beverage containers are prohibited.
- Fires may not be started closer than 10 feet from the nearest plant life.
- Camping is not allowed between the hours of 10:30 p.m. and 5 a.m., except during the spring smelt run.
- Horseback riding is not allowed on Wisconsin Point.
- By City ordinance, all pets must be on-leash.
- All trash and recycling must be picked up and thrown away. Trash and recycling bins are located at each parking lot.

CITY OF SUPERIOR MAP

For a detailed map of the City of Superior, please call (800) 942-5313 or go to travelsuperior.org



Boat Launches:

- 1 Arrowhead Pier
- 2 N 21st Street Launch
- 3 Barker's Island
- 4 Loon's Boat Landing

Schools & Colleges:

- 1 School District of Superior Administration
- 2 UWS Campus
- 3 WITC Campus
- 4 Superior High School
- 5 Superior Middle School

Points of Interest:

- 1 Richard Ira Bong Airport
- 2 Superior Ballgrounds
- 3 Superior Curling Club
- 4 Gondik Law Speedway
- 5 Superior Dog Park
- 6 Richard I. Bong Veterans Historical Center & Welcome Center
- 7 Old Firehouse & Police Museum
- 8 Bahtawa Mansion
- 9 Nemadji Golf Course
- 10 SS Meteor Maritime Museum

Lodging Properties:

- 1 Androy Hotel
- 2 Barker's Island Inn & Conference Center
- 3 Best Western Bridgeview
- 4 Boarders Inn & Suites
- 5 Hampton Inn by Hilton
- 6 Holiday Inn Express Hotel & Suites
- 7 Super 8 of Superior
- 8 Superior Inn

Trailheads:

- 1 Albany Trailhead
- 2 Superior Municipal Forest Trailhead/Millstream Trail
- 3 Osage Trail



WHERE TO PLAY

Commemorative Air Force Lake Superior Squadron

• Museum & Education Division
at the Richard I. Bong Veterans
Historical Center

305 Harbor View Parkway
Superior, WI 54880
(715) 392-7151

• Aircraft Division at the Superior
Airport

4804 Hammond Avenue
Superior, WI 54880
(218) 349-5079
cafduluth.com

The Commemorative Air Force was incorporated in 1971 with a mission to restore and preserve WWII era combat aircraft. Today the Aircraft Division restores and displays restored aircraft including two PBY Catalinas. The museum, first opened by volunteers in 2001, has

grown to offer over 3,000 historic artifacts ranging from the Civil War to today.

*Museum & Education Division
at the Richard I. Bong Veterans
Historical Center open center hours.*

*Aircraft Division at the Superior
Airport - Open Wednesdays and
Saturdays 10 am - 2pm or by
appointment.*

North Shore SUP

Barkers Island, Superior, WI 54880
(218) 343-1308
www.duluthsup.com

Stand Up Paddleboarding! Located on beautiful Barker's Island, serving the community since 2012. Come paddle the island with us! Rentals, intro classes, SUP YOGA, KID

SUP Club, youth programming, furry friends welcome, parties, events, sunset paddles, guided trips, and more! Stoked to share the sport of SUP with you, see you on the water!

Superior Public Museums

(715) 394-5712
superiorpublicmuseums.org
info@superiorpublicmuseums.org

- Fairlawn Mansion
906 East 2nd Street
Superior, WI 54880
- Old Firehouse & Police Museum
402 23rd Avenue East
Superior, WI 54880
- SS Meteor Historic
Whaleback Ship
300 Marina Drive Barker's Island
Superior, WI 54880

Superior Public Museums operates three unique historical sites. Visit Fairlawn Mansion, the home of



Commemorative Air Force Lake Superior Squadron
Aircraft Division

STAND UP PADDLEBOARDING

RENTALS-INTRO CLASSES-GUIDED TRIPS
KIDS SUP-SUP YOGA-PARTIES & MORE

\$5 OFF!
2-HR-ON-SITE PADDLING EXCURSION
Located on BEAUTIFUL Barker's Island!
Come paddle the island!

DULUTHSUP.COM
(218) 343-1308

*Must book in advance, call or text to schedule,
mention this ad for savings!

Lumber Barron Martin Pattison that also served as a Children's Home for 42 years. Tour the last remaining whaleback ship, the SS Meteor. The self-guided Old Firehouse & Police Museum houses Historic firefighting equipment and is home to the State of Wisconsin Police & Fire Hall of Fame. Book your tour today!

Please call or visit website for current hours.

(715) 394-5712

Richard I. Bong Veterans Historical Center
305 Harbor View Parkway
Superior, WI 54880
(715) 392-7151
bongcenter.org

Named for America's Ace of Aces, Major Richard I. Bong. The Center honors veterans of WWII and later conflicts. Exhibiting a restored P-38 fighter. Admission charged. Every Friday at 9 am, "The Flag of Remembrance", an American Legion Post 435 program, honors the life and memory of a deceased veteran by flying the veteran's flag for one week over the center. Groups & motor coach travel welcome.

Open daily 9am - 5pm, Sunday 12-5.

SUPERIOR-DOUGLAS COUNTY AREA CHAMBER OF COMMERCE MEMBERS

Amnicon Falls State Park
 4279 Cty. Road U, South Range
 (715) 398-3000

Barker's Island Marina Sailboats Inc.
 250 Marina Drive, Superior
 (715) 392-7131

Black Bear Casino Resort
 1785 Hwy 210, Carlton
 (888) 771-0777

Brule River Canoe Rental
 13869 E. US Hwy 2, Brule
 (715) 372-4983

Commemorative Air Force Lake Superior Squadron
 4804 Hammond Avenue, Superior
 (218) 349-5079

Douglas County Historical Society
 1101 John Avenue, Superior
 (715) 392-8449

Duluth Entertainment Convention Center (DECC)
 350 Harbor Drive, Duluth
 (218) 722-5573

Duluth-Superior Symphony Orchestra
 130 West Superior Street, Ste. LL2, Duluth
 (218) 623-DSSO (3776)

Fond-du-Luth Casino
 129 E. Superior Street, Duluth
 (218) 720-5100

Friends of the Lake Superior National Estuarine Research Reserve
 14 Marina Drive, Superior
 (715) 399-4095

Glensheen
 3300 London Road, Duluth
 218-726-8910

Grandma's Marathon
 351 Canal Park Drive, Duluth
 (218) 727-0947

Great Northern Classic Rodeo
 PO Box 1969, Superior
 (715) 817-6336

Lake Superior Chainsaw Sculpture Championship
 229 Marina Drive Superior
 (218) 590-5732

Lake Superior Zoo
 7210 Fremont Street, Duluth
 (218) 730-4500

Lucius Woods Performing Arts Center
 9245 E Main St, Solon Springs
 (715) 378-4272

Nemadji Golf Course & Grill
 5 North 58th Street, Superior
 (715) 394-0266

North Shore SUP
 250 Marina Drive, Superior
 (218) 343-1308

Pattison State Park
 6294 South State Road 35, Superior
 (715) 399-3111

Richard I. Bong Veterans Historical Center
 305 Harbor View Parkway, Superior
 (715) 392-7151

Superior Council for the Arts
 PO Box 1398 Superior
 (715) 392-6007

Superior Douglas County Family YMCA
 9 North 21st Street, Superior
 (715) 392-5611

Superior Ice Arena/Superior Amateur Hockey Association
 1015 Oakes Avenue, Superior
 (715) 394-4899

Superior Public Museums - Fairlawn, S.S. Meteor, Old Firehouse & Police Museums
 906 East 2nd Street, Superior
 (715) 394-5712

World of Wheels Skate Center
 1218 Oaks Avenue, Superior
 (715) 392-1031

SUPERIOR PUBLIC MUSEUMS
THREE MUSEUMS • ONE HERITAGE
 Book your tour today!
 715-394-5712
www.superiorpublicmuseums.org



12 THINGS TO DO UNDER \$12

RICHARD I. BONG VETERANS HISTORICAL CENTER & COMMEMORATIVE AIR FORCE

Check out a P-38 airplane up close!

All Tickets Under 10

FAIRLAWN MANSION

Go back in time with this Victorian mansion!

All Tickets Under 10

S.S. METEOR

See the last Whaleback Ship above water!

All Tickets Under 10

OLD FIRE HOUSE & POLICE MUSEUM

View historic fire rigs including a nineteenth century horse drawn buggy!

Free

PATTISON STATE PARK

Feel the mist from Wisconsin's tallest waterfall (165ft!)

Day pass for all State Parks - \$11

BRULE RIVER STATE FOREST

Take a walking tour of the Fish Hatchery!

Free

AMNICON FALLS STATE PARK

Enjoy the roaring sound of water on an island surrounded by waterfalls!

Day pass for all State Parks - \$11

WISCONSIN POINT

Dip your toes in Lake Superior, right next to the Superior Light House!

Free

LAKE SUPERIOR ESTUARIUM

Explore and learn the story of the St. Louis River Estuary!

Free

SUPERIOR MUNICIPAL FOREST

Toss a round at the Disc Golf Course or take a short hike through the boreal forest!

Free

OSAUCIE TRAIL

Take a stroll along this paved trail with beautiful Lake Superior views!

Free

NORTH COUNTRY SCENIC TRAIL

40 miles of this 4,000+ mile trail runs through Douglas County!

Free



Voted Best Golf Course of 2020

in Duluth News Tribune's Best of the Best contest

Nemadji
GOLF COURSE

Come enjoy our 36 holes, driving range, outdoor patio dining with a cocktail, or just few swings on our par 3 course!

(715) 394-0266 | www.nemadjigolf.com



WHERE TO SHOP

Once Again New & Used
310 Belknap Street
Superior, WI 54880
(218) 393-3770

Stop in this quaint gift shop located right in the heart of Superior. You will find seasonal items including home decor, refurbished furniture, decorative pillows, towels, linens, valances, candles, and trinkets. We offer all of the one-of-a-kind gift items you want to bring back home with you! Find us on Facebook to see what items are currently in stock!

*Open Wednesday-Friday 12 pm
- 6 pm and Saturday 10 am - 4 pm*

**SUPERIOR-DOUGLAS
COUNTY AREA CHAMBER OF
COMMERCE MEMBERS**



Angie's Closet, LLC
1315 Tower Avenue, Superior
(715) 394-7002

Artistic Florals by Leslie
1705 Tower Avenue, Superior
(715) 718-5688

Bad Axe Tool Works (Du Nord)
69 N. 28th Street East, Ste. #30
(608) 520-0729

Belknap Liquor & Lounge
130 Belknap Street, Superior
(715) 394-3616

Benna Ford Superior
3022 Tower Avenue, Superior
(715) 394-8669

Blaine Business Center
823 Belknap Street,
Superior
(715) 395-6188

Campbell Lumber
3107 Tower Avenue,
Superior
(715) 394-7721

Carlson's Floor
Center Inc.
2032 East 5th
Street, Superior
(715) 398-6503

Dan's Feed Bin, Inc
806 Hammond Avenue, Superior
(715) 394-6639

Earth Exchange
1713 Belknap Street, Superior
(715) 392-0620

Epicurean Factory Outlet
257B Main Street, Superior
(218) 336-8584

Fairlawn Mansion
906 East 2nd Street, Superior
(715) 394-5712

Globe News/Vinyl Cave
1430 Tower Avenue, Superior
(715) 392-2090

Hammond Steak House & Liquor Store
1402 North 5th Street, Superior
(715) 392-3269

Interstate All Battery Center
426 John Avenue, Superior
(715) 392-3710

Joe Polecheck Photography
1204 Tower Avenue, Superior
(218) 310-7553

Kari Toyota
1002 Tower Avenue, Superior
(715) 394-4429

Keyport Liquor, Restaurant & Lounge
1900 Belknap Street, Superior
(715) 392-3377 or (715) 392-5855

Kwik Trip Inc. #135
6007 Tower Avenue, Superior
(715) 392-1892

Kwik Trip Inc. #171
918 Belknap Street, Superior
(715) 392-1283

Kwik Trip Inc. #189
623 Hammond Avenue, Superior
(715) 392-3865

Kwik Trip Inc. #203
1419 Banks Avenue, Superior
(715) 392-3947

Kwik Trip Inc. #222
3027 East 2nd Street, Superior
(715) 392-2954

Kwik Trip Inc. #267
2128 East 2nd Street, Superior
(715) 399-0121

Kwik Trip Inc. #864
2807 Tower Avenue, Superior
(715) 392-1885

Mac Sport and Marine
1525 Broadway Street, Superior
(715) 718-2700

Maytag Laundry
1721 Tower Avenue, Superior
(651) 775-1914

Nemadji Golf Course - Pro Shop
5 North 58th Street, Superior
(715) 394-0266

Northland Chevrolet
1420 Ogden Avenue, Superior
(715) 392-5111

Northwest Outlet
1814 Belknap Street, Superior
(715) 392-9838

Nummi Jewelers, LLC
1120 Belknap Street, Superior
(715) 392-3470

Oulu Glass LLC
1695 W. Colby Road, Brule
(715) 372-4160

Posh Affair Boutique
1705 Tower Avenue, Superior
(715) 392-3018

Prime Appliance
2817 Banks Avenue, Superior
(715) 395-5715


Richard I. Bong Veterans Historical
Center
305 Harborview Parkway, Superior
(715) 392-7151

Screen Graphics
1328 Oakes Avenue, Superior
(715) 394-2067

The Shack Smokehouse Bar &
Liquor Store
3301 Belknap Street, Superior
(715) 392-9836

**FIND YOUR
SUPERIOR.**

start your journey
uwsuper.edu



Macie Steffen
Class of 2020
Early Childhood Education


UNIVERSITY of WISCONSIN
Superior

epicurean • FACTORY OUTLET



HONE

BLADE
SHARPENING
AT FACTORY
OUTLET



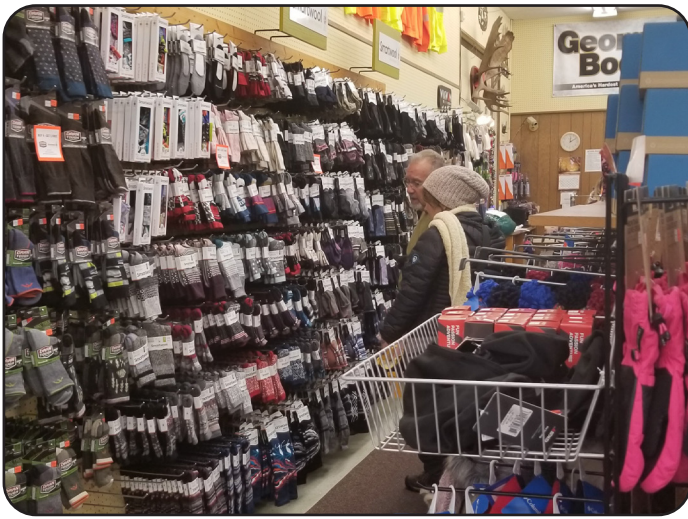
EXTRA 15% OFF!

Hone sharpening services and Epicurean Factory Outlet retail.
Valid in store only.

.....

257B Main St.
Superior WI 54880

218-336-8584
epicureanfactoryoutlet.com



Northwest Outlet

Super One
Harborview & Liquor
Store
2202 East 2nd
Street, Superior
(715) 398-0078

Sutherland's CBD
1613 Tower Avenue,
Superior
(715) 718-8050

Sweeden Sweets
601 Tower Avenue,
Superior
(715) 718-0713

Tri-State Business Systems
2829 Banks Avenue, Superior
(715) 392-6221

Twin Ports Bid
1322 Banks Avenue, Superior
(715) 718-2148

Wal-Mart Store
3705 Tower Avenue, Superior
(715) 392-6060

White Winter Winery
68323 Lea Street, Iron River
(715) 372-5656

Wine Beginnings
1413 Tower Avenue, Superior
(715) 392-8466

Shannon's Stained Glassery
5904 Tower Avenue, Superior
(715) 392-6009

The Calla Lily
2339 Hammond Avenue, Superior
(218) 348-8919

Superior Chrysler Dodge Jeep Ram
1318 Ogden Avenue, Superior
(715) 392-8191

The Pottery Burn Studio
1207 Tower Avenue, Superior
(715) 718-8080

Super One Foods
1515 Oakes Avenue, Superior
(715) 392-6218

Trends Day Spa & Salon
823 Belknap Street, Ste. 119, Superior
(715) 398-5868



YOUR DESTINATION FOR DINING, SHOPPING, NIGHTLIFE & MORE!

MORE THAN 300 BUSINESSES IN 89 BLOCKS



SUPERIOR

BUSINESS IMPROVEMENT DISTRICT

Visit superiorbid.com or call
715.394.3557 for more info.

Maytag

LAUNDRY

1721 Tower Avenue, Superior and 820 East 4th Street, Duluth

www.maytagcoinlaundry.com

Extra Large Washers & Dryers

Open Every Day

6:00 am to

10:00 pm



WHERE TO EAT & DRINK

Barkers Waterfront Grille
 300 Marina Drive
 Superior, WI 54880
 (715) 392-7152
barkersislandinn.com
info@barkersislandinn.com

The tranquil atmosphere and excellent food is well worth a visit. While dining, you will enjoy a beautiful view of Barker's Island Marina on Lake Superior. Local specialties feature fresh Lake Superior white fish and lake trout. Breakfast, lunch, and dinner. Friday Fish Fry.

Call or visit website for current hours.

**SUPERIOR-DOUGLAS
 COUNTY AREA CHAMBER OF
 COMMERCE MEMBERS**
 7 West Taphouse
 1319 Tower Avenue, Superior
 (715) 718-0386

A & W Restaurant
 701 Belknap Street, Superior
 (715) 392-6125

Barkers Waterfront Grille
 300 Marina Drive, Superior
 (715) 392-7152

Belknap Liquor & Lounge
 130 Belknap Street, Superior
 (715) 394-3616 x1

Big Apple Bagels
 1224 Belknap Street, Superior
 (715) 718-0051

Buffet at the Bear, Seven Fires
 Steakhouse - Black Bear Casino
 Resort
 1785 Hwy 210, Carlton
 (888) 771-0777

Burger King Superior
 724 Belknap Street, Superior
 (715) 392-9555

Chartwells-UWS Food Service
 1605 Catlin Avenue, Superior
 (715) 394-8102

Dreamland Supper Club
 4368 S. Cty Road E, South Range
 (715) 398-3706

Dunkin' Donuts
 3110 Tower Avenue, Superior
 (715) 919-0959



Twisted Pastries
 Coffeeshouse

1418 Tower Avenue, Superior, WI
 (715) 394-2207

Open 7 days a week!

**Coffee, Espresso, Pastries,
 Panini Sandwiches and more!**





7 West Taphouse

Empire Coffee
1204 Tower Avenue, Superior
(715) 718-0926

Erbert & Gerbert's
1325 Tower Avenue, Superior
(715) 392-5305

Grizzly's Wood Fired Grill
3405 Tower Avenue, Superior
(715) 392-5210

Gronk's Grill & Bar
4909 E. 2nd Street, Superior
(715) 398-0333

Guadalajara Mexican Restaurant
69 North 28th Street, Superior
(715) 392-2894

Hammond Steak House
1402 North 5th Street, Superior
(715) 392-3269

Keyport Liquor, Restaurant & Lounge
1900 Belknap Street, Superior
(715) 392-3377

Kro Bar & Grill
13920 East US Hwy 2, Brule
(715) 372-4876

McDonald's Restaurant
2026 Tower Avenue, Superior
(715) 392-5727

McDonald's
Restaurant East
End
2115 East 2nd
Street, Superior
(715) 398-5422

Papa Murphy's
Take N Bake
Pizza
2433 Tower
Avenue,
Superior
(715) 395-2485

Perkins
Restaurant &
Bakery
103 East 2nd
Street, Superior
(715) 392-8544

Rich Cuisine &
The Wednesday
Bakery

1202 Ogden Avenue, Superior
(218) 349-5659

The Shack Smokehouse Bar &
Liquor Store
3301 Belknap Street, Superior
(715) 392-9836

Shamrock Bar & Pizza
5825 Tower Avenue, Superior
(715) 394-9321

Spirit Room
1323 Broadway St., Ct. 100,
Superior
(715)-817-4775

St. Croix Inn
11390 S. 5th, Solon Springs
(715) 378-4444

Super One Foods
1515 Oakes Avenue, Superior
(715) 392-6218

Super One Foods - Harbor View
2202 E. 2nd Street, Superior
(715) 398-0078

Super One Liquor
2202 E. 2nd Street, Superior
(715) 392-2722

Sweeden Sweets
601 Tower Ave, Superior
715-718-0713

T.J.'s Champions Lounge
715 Belknap Street, Superior
(715) 392-5341

Tavern 105
1811 Central Avenue, Superior
(715) 718-2650

Twisted Pastries Coffeehouse
1418 Tower Avenue, Superior, Ste. 2
(715) 394-2207

Vintage Italian Pizza
1201 Tower Avenue, Superior
(715) 392-5555

Wasabi Japanese Restaurant
3333 Tower Avenue, Superior
(715) 718-8033



Gronk's Grill & Bar



Barkers Island Inn & Conference Center

300 Marina Drive
Superior, WI 54880
(715) 392-7152
(800) 344-7515
barkersislandinn.com

Guest Rooms: 111

Escape to an amazing resort hotel location on Lake Superior. Book today! Sauna. Marina View Terrace. Special Club Offers. Spacious Suites. Great Location. Perfect for Events. Exciting Surroundings. Game Room. Amenities: Free WiFi, Free Breakfast, Indoor Pool Area, Hot Tub. Pictured above. See our ad on page 3.

Hampton Inn Canal Park Duluth

310 Canal Park Drive, Duluth, MN 55802
(218) 720-3000
(800) 426-7866
hampton.com/hi/duluth

Guest Rooms: 103

In the heart of beautiful Canal Park, on Lake Superior and the Lakewalk, our hotel features a complimentary hot breakfast, indoor pool, whirlpool and lake view rooms. All rooms have free HS internet access, refrigerators and microwaves. Tons of activity, attractions, dining,

and shopping close by! See our ad on page 3.

Pier B Resort Hotel

800 W. Railroad Street, Duluth, MN 55802
(218) 481-8888
pierbresort.com

Guest Rooms: 140

Duluth's newest waterfront resort hotel. Unexpected hospitality and just a short walk from Canal Park. Enjoy Silos Restaurant, seasonal activities, spacious grounds, outdoor fires and unparalleled views of the Aerial Lift Bridge and Harbor. The guest rooms offer comfortable, contemporary elegance, many with stunning harbor views for an up-close view of the action.

Superior Inn

525 Hammond Avenue
Superior, WI 54880
(800) 777-8599
(715) 394-7706
superiorinn.com

Guest Rooms: 69

With affordable rates and a friendly staff, staying at Superior Inn will be relaxing—and

a great part of your visit to the Twin Ports. Located in downtown Superior, Wisconsin, and only five minutes from Duluth, Minnesota, we're the ideal hotel for your next trip. See our ad below.

Vacation Rentals

Superior and Douglas County offers many great properties on popular vacation rental booking sites. Search for "Superior" or "Douglas County" when on [airbnb.com](https://www.airbnb.com), www.expedia.com, or [vrbo.com](https://www.vrbo.com)!

Simply Superior
Superior Inn
GREAT RATES
YEAR ROUND

FOR RESERVATIONS CALL 715-394-7706
OR BOOK ONLINE AT [SUPERIORINN.COM](https://www.superiorinn.com)

Free Wi-Fi Free breakfast Indoor pool

WHERE TO SLEEP

			Breakfast	Pool	Meeting Space	Game Area	Fitness Room	Pets	Handicapp Access	Suites	Laundry	Truck/RV Parking	Trail Access
Androy Hotel			R			•			•			•	W
1213 Tower Ave. Superior, WI 54880	715-394-7731	androyhotel.com											
Barker's Island Inn & Conference Center - Waterfront Grille			N	•	•	•	•	L	•	•	•	•	W
300 Marina Drive Superior, WI 54880	715-392-7152	barkersislandinn.com											
*Restaurant on site - Waterfront Grille													
Best Western Bridgeview			H	•			•	•	•	•	•	•	W
415 Hammond Ave. Superior, WI 54880	715-392-8174	bestwestern.com											
Black Bear Casino Resort				•	•	•	•	S	•	•	•	•	Y
1789 Hwy 210 Carlton, MN 55718	888-771-0077	blackbearcasinoresort.com											
Boarders Inn & Suites			C	•					•	•	•	•	W
1405 Susquehanna Ave. Superior, WI 54880	715-392-7600	staycobblestone.com											
Brule River Motel								D	•			•	Y
13844 E Hwy 2 Brule WI 54820	715-372-4815	brulrivermotel.com											
Hampton Inn - Duluth Canal Park			H	•	•		•	S	•	•	•	•	
310 Canal Park Drive Duluth, MN 55802	218-720-3000	duluthmn.hamptoninn.com											
Hampton Inn by Hilton Superior			H	•			•	S	•		•	•	Y
66 E 2nd Street, Superior, WI 54880	715-718-2723	hilton.com/en/											
Heartwood Conference Center & Retreat					•	•	•	C	•	•		•	Y
N10884 Hoinville Rd. Trego, WI 54880	715-466-6300	heartwoodconferencecenter.com											
Holiday Inn Express Hotel & Suites			H	•	•		•	S	•	•	•	•	Y
303 2nd Avenue East Superior, WI 54880	715-392-3444	holidayinnexpress.com											
Residence Inn by Marriott Duluth			H	•	•		•	•	•	•	•	•	
517 W. Central Entrance Duluth, MN 55811	218-279-2885	marriot.com											
South Pier Inn			C						•	•			
701 Lake Avenue South Duluth, MN 55802	800-430-7437	southpierinn.com											
St. Croix Inn			C	•	•	•	•	•	•	•		•	Y
11390 S 5th Street E Solon Springs, WI 54873	715-378-4444	stcroixinnhotel.com											
*Offers pontoon rentals, use of kayaks, canoes, and bikes													
Super 8 Motel of Superior			C						•	•		•	Y
4901 East 2nd St. Superior, WI 54880	715-398-7686	wyndhamhotels.com/super-8											
Superior Inn			C	•		•		•	•	•			
525 Hammond Avenue Superior, WI 54880	715-394-7706	superiorinn.com											

Key:

C - Continental Breakfast	R - Restaurant Nearby
D - Dogs Only	S - Service Animal Only
H - Hot Breakfast	W - Winter Access
L - Limited	Y - Year Round Access
N - See Note	

CAMPING

	Sites	Location	Trail Access	Beach Access	Boat Landing	Dump Station	Electric	Water Hookups	Toilet	Full Hookups	Hiking	Laundry	Play Ground	Showers	Swimming	Winter Camping
Amnicon Falls State Park wisconsin.goingtocamp.com 4279 County Road U, South Range, WI 54874 715-398-3000	35	Hwy 2							•		•		•		•	•
The Backyard on Amnicon Lake 4505 East Tri Lakes Road, Superior, WI 54880 (715)399-8443	48	WI 35	•	•	•	•	•	•	•	•		•	•	•	•	
Bois Brule River Campground wisconsin.goingtocamp.com 6298-6250 Ranger Road Lake Nebagamon, WI 54849	22	Hwy 2	•						•		•					•
Brule River Motel & Campground 13844 US-2 Brule, WI 54820 715-372-4815	12	Hwy 2	•			•					•			•		
Copper Range Campground wisconsin.goingtocamp.com 13804 Park Road, Brule, WI 54820 715-372-5678	17	Hwy 2	•						•		•					•
Crystal Lake Campground & Cabins 15993 S. Crystal Lake Rd Wascott, WI 54838 715-466-2805	75	Hwy 53	•	•	•	•	•	•	•	•	•	•	•	•	•	•
Gordon Dam County Park 7201 E County Hwy Y Gordon, WI 54838 715-378-2219	33	Hwy 53	•		•	•	•		•		•		•		•	•
Lake Nebagamon Ravine Park 1105 Camp Nebagamon Dr Lake Nebagamon, WI 54849 715-374-3101	10	Hwy 2	N	N	N				•			N	N		N	
Lucius Woods County Campground 9231 E. Marion Ave. Solon Springs, WI 54873 715-378-2219	29	Hwy 53	•	•		•	•	•	•		•		•	•	•	
Mooney Dam County Park 14293 S. Fowlers Circle Gordon, WI 54838 715-378-2219	11	Hwy 53	•		•		•		•							
Nemadji Campground 3132 E 5th St. Superior, WI 54880 715-398-7829	47	City	N		N	•	•	•	•	•			•	•		
Northland Camping and RV Park 6377 State Hwy. 13 South Range, WI 54874 715-398-3327	57	Hwy 2/53	•			•	•	•	•	•		•	•	•		
North View Campground 7440 County Rd. Y Wascott, WI 54838 715-376-4528	73	Hwy 53	•			•	•	•	•	•			•	•		
Pattison State Park wisconsin.goingtocamp.com 6294 S. State Road 35 Superior, WI 54880 715-399-3111	62	WI 35	•	•		•	•		•		•		•	•	•	•
Up North Resort 7080 E. East Up North Road Gordon, WI 54838 715-520-4359	89	Hwy 53	•			•	•	•	•	•						
Wasko's Lakeshore Campground 8441 South County Rd. P Lake Negabamon, WI 54849 715-374-3514	60	Hwy 53	•	•	•		•		•	•				•	•	

N - Nearby



EVENTS

Each year Superior, Douglas County and our region holds various events including farmer's markets, music in the park, Barbecues, socials, street dances, festivals, and more! Below are just a few examples of our annual events!

Lake Superior Dragon Boat Festival
Last weekend in August

Great Northern Classic Rodeo
Labor Day Weekend

Lake Superior Ice Festival
Last weekend in January



The Lake Superior Dragon Boat Festival is a fundraiser for the Local Rotary clubs where teams from all over the world race "dragon boats," a 20 paddler boat, for the fastest times!
(See event page cover photo!)

Saddle up and enjoy the Great Northern Classic Rodeo! This yearly Labor Day Weekend event features bareback bronc riding, saddle bronc riding, breakaway roping and more!

The Lake Superior Ice Festival is a community driven event that celebrates the coolest aspects of our region! You'll find ice sculptures, a large snow slide, and winter outdoor fun for the whole family!

For the most up-to-date event information on what events are happening in Superior and Douglas County visit our website at:
bit.ly/TravelSuperiorEvents



PARKS AND FORESTS

STATE PARKS AND FORESTS

Amnicon Falls State Park
4279 County Highway U
South Range, WI 54874
(715) 398-3000
dnr.wi.gov/topic/parks/name/amnicon/

One visit to Amnicon Falls State Park and you'll immediately understand why this magical park was voted Wisconsin's "State Park Treasure" in a 2014 Wisconsin Department of Natural Resources Facebook contest. Between tumbling waterfalls, meandering trails, and the Horton Covered Bridge, Amnicon Falls State Park is a must-stop for anyone visiting Douglas County.

Lake Superior Magazine awarded the park with the distinction of "Best Waterfall" in Wisconsin, and TravelWisconsin.com says it has some of the best hiking trails of Wisconsin's "State Park Hidden Gems." The park features places to picnic, camp, and hike.

Pattison State Park
6294 South State Road 35
Superior, WI 54880
(715) 399-3111
dnr.wi.gov/topic/parks/name/pattison/

If you're on the search for waterfalls, Pattison State Park will surely deliver! The park features Wisconsin's highest waterfalls, and the 165-foot-tall Big Manitou Falls is the fourth-highest waterfall east of the Rocky Mountains. TravelWisconsin.com lists Pattison State Park (along with Amnicon Falls State Park) in the "Five Top Spots for Wisconsin Waterfalls." Pattison State Park also features nine miles of trails, camping, a lake with beach, and a nature center.

Brule River State Forest
6250 South Ranger Road
Brule, WI 54820
(715) 372-5678
dnr.wi.gov/topic/StateForests/bruleRiver/

The Brule River State Forest encompasses the Bois Brule River, and is about 30 miles north to south. Aside from the spectacular fishing, kayaking, and canoeing opportunities on the Brule River, within the forest you will find multi-use trails,



Horton Covered Bridge - Amnicon Falls State Park



Selfie Stand at Big Manitou Falls - Pattison State Park

camping and backpacking opportunities, an archery trail/course, horseback riding trails, fish hatchery, and picnic areas with tables and grills.

To learn more about our state parks and forests go to www.superiorchamber.org/parks-and-forests.

Travel Wisconsin Selfie Stands

Travel Wisconsin has constructed selfie stands at the most scenic spots across our state! You can find selfie stands at these locations in Douglas County:

Amnicon Falls State Park
Pattison State Park
Brule River State Forest

COUNTY PARKS

Douglas County is home to five

day-use parks and three county parks that offer camping. You can learn more by calling (715)-395-7270 or going to douglascountywi.org.

Douglas County Wildlife Area 13028 South Bird Road Gordon, WI 54838

More than 4,000 acres of brush prairie habitat make up the Douglas County Wildlife Area, which is more commonly known as the "Bird Sanctuary." Open fields dotted with wildflowers make for spectacular wildlife viewing opportunities. The Douglas County Wildlife Area contains 14 miles of designated horseback riding trails and stable facilities.

Anna Gene County Park

6100 East Lyman Lake Road South Range, WI 54874

This 256-acre park is located just 20 miles south of Superior in the Town of Oakland. The park is located on Lyman Lake and features a swimming beach, picnic area, playground, boat ramp, dock, trails, and restrooms.

Bass Lake County Park 11869 Bass Lake Road Solon Springs, WI 54873

This small two-acre park is located in the Town of Solon Springs and features a swimming beach, picnic area with tables and grills, fishing opportunities, and newer vaulted restrooms.

Long Lake County Park 9909 Fire Lane Road Solon Springs, WI 54873

Long Lake County Park is three-acres in size and located in the Town of Solon Springs. The park features a picnic area, fishing, and swimming. There are newer vaulted restrooms.

Lake Minnesuing County Park 7837 South County Highway P Bennett, WI 54849

Located on the north side of the beautiful Lake Minnesuing, this 30-acre park has a swimming beach, nicely shaded picnic area, and restrooms. A boat launch is located about 1/4 mile west of the park.

Park Creek Pond 9182 East Hughes Avenue Solon Springs, WI 54873

Park Creek Pond is an 11-acre area designated as a children's fishing area, meaning children under the age of 14 may use this occasionally stocked pond.

Mooney Dam County Park 14293 South Fowlers Circle Gordon, WI 54838

A boat launch with excellent fishing opportunities, camping, picnic and grill areas, and newer vault toilets are all located at Mooney Dam



Pokegama Bay - Superior Municipal Forest

County Park on Lower Eau Claire Lake in Gordon.

Gordon Dam County Park
7201 East County Highway Y
Gordon, WI 54838

With 33 campsites and opportunities for picnicking, boating, swimming, hiking, wildlife viewing, and fishing, Gordon Dam County Park's location on the St. Croix Flowage offers a slew of amenities. A fish cleaning house, canoe and boat launch, playground, newer vault toilets, and picnic sites with grills round out this park.

Lucius Woods County Park
9231 East Marion Avenue
Solon Springs, WI 54873

Lucius Woods County Park features camping, hiking trails, a playground, picnic areas, and even an open-air performing arts amphitheater.

SUPERIOR PARKS AND FORESTS

You don't have to leave Superior

to find the magic of the outdoors! From the municipal forest to our ever expanding hiking and biking trails Superior is one of the regions premier outdoor recreation destinations!

Superior Municipal Forest
North 28th Street
and Wyoming Avenue
Superior, WI 54880

At 4,400 acres of forest and natural habitat, the Superior Municipal Forest is the third-largest forest within a city in the nation. This forest of white and red pine, balsam, cedar, black spruce, white birch, and aspen makes for great hiking, mountain biking, archery, cross-country skiing, snowmobiling, paddling, horseback riding, kayaking, and more! The Superior Municipal Forest is also home to the Millennium Trail, the Superior Dog Park and a 18 hole Disc Golf Course.

Billings Park
15 Billings Drive
Superior, WI 54880

Billings Park features grills, horse-shoe pits, picnic areas, playgrounds, pavilion, indoor restrooms, tables

and volleyball. There are multiple walking trails in this park that take you right near the water. The site also features the Japanese Friendship Garden, a site meant to symbolize the heart of the friendship between Superior and its sister city, Ami-Machi, Japan.

Central Park
717 6th Avenue East
Superior, WI 54880

Central Park features a six-hole disc golf course. Faxon Creek runs through the center of the lightly wooded park, which contains two pavilion areas, playground, and walking paths.

Heritage Park
2828 Hammond Avenue
Superior, WI 54880

Heritage Park features a pavilion, picnic tables, playground, and is home to Superior's Skate Park. The gates to the skate park automatically close at 10:00 p.m.

For a full list of Superior's City Parks and their addresses, please call (715) 395-7270 or visit ci.superior.wi.us



RECREATION TRAILS

HIKING AND WALKING TRAILS

Bear Creek Trail-Makwa Ziibinnis Mikkana

Length: 2.25 miles

Location: Parking located at Bear Creek Park just off Moccasin Mike Road.

This non-motorized trail was designed for walkers, bikers, hikers, and snowshoe enthusiasts. The trail connects Wisconsin Point to the Osaugie Trail and winds through the beautiful forest along Allouez Bay. Open year round.

Historic Old Bayfield Road

Length: 2.25 miles.

Location: Three miles north of Highway 2 on Clevedon Road in the Brule River State Forest.

The trail travels eastward down a hill past former copper mine sites, and then climbs a scenic ridge to pass near the Clevedon fire tower. The trail then continues south and loops back to the parking lot.

North Country National Scenic Trail

Length: 40 miles.

Location: Runs from Gordon Dam County Park through the Brule River State Forest

The entire trail stretches 4,600 miles from North Dakota to Vermont and is the longest hiking path in the United States. The trail passes in the footsteps of native people and fur traders as it crosses the historic Brule-St. Croix Portage. Camping opportunities are available.

Wisconsin Point

Length: 2.75 miles.

Location: See page six.

Known to locals as "The Point," the beach contains stands of old growth pine, beach dune communities, and marsh open water habitats creating one of the best migratory bird areas in May and September at this intersection of marsh, lake, and woodland.

Amnicon Falls State Park Thimbleberry Nature Trail

The 0.8-mile Thimbleberry Nature Trail is the place to observe a variety of trees, flowers, non-flowering plants, birds, and animals. A side spur leads to a pond, which once was a brownstone quarry. A booklet keyed to numbered signposts tells more about the things you'll see.

The trail also provides views of the flat part of the river as well as easy access to the river bed about 0.2 miles downstream from the falls.

Trails Around the Falls

The most popular trail to view the falls is the 0.25 mile trail on the island. This trail gives you viewing access to the three main falls: Upper, Lower, and Snake Pit. It also provides viewing opportunities to other smaller waterfalls and pools. An additional 0.5 miles of trail goes up and down the river to view many other pools and cascades.

Pattison State Park Big Manitou Falls Overlooks

A pedestrian tunnel takes you from the park's main picnic area under Highway 35 to short trails that give you many views of Big Manitou Falls from both sides of the river. This trail is 0.5 miles long. A self-guiding booklet is available to help you discover more about the geology and history of the falls as you hike.

Big Manitou Falls River Trail

This moderately steep wooded trail leads 0.75 miles downhill to the Black River, 0.25 miles downstream of Big Manitou Falls. At the river, the adjacent cliffs give a pronounced view of the Douglas Fault.

Beaver Slide Nature Trail

This 2-mile trail circles Interfalls Lake. Discover the plants and animals that thrive in the boreal forest.

Little Manitou Falls Trail

This trail continues from Beaver Slide Nature Trail south along the Black River.

Logging Camp Trail

This 4.7-mile trail explores the upland hardwood forest and lowland boreal forest, with glimpses of the Black River from overlooks. A spur trail from the Logging Camp Trail leads to three backpack campsites.

HORSEBACK RIDING TRAILS

Brule River State Forest

Length: 14 miles.

Location: 6250 S. Ranger Road, Brule

Horseback riders can enjoy miles of trails within the Brule River State Forest, including the Brule-St. Croix Snowmobile Trail, hunter walking trails, and numerous back roads.

Douglas County Wildlife Area/County Forest

Length: 14 miles

Location: Off Highway 53, three miles south of Solon Springs

The designated horse trails travel through a gently rolling prairie landscape. Corrals and stables are available for public rental. Additionally, all forest roads and trails that are open for motorized use are open for horseback riding.

Saunders State Trail

Length: 8 miles.

Location: South of Superior on County Highway C

The trail begins near the town of Saunders and passes through several communities. The entire trail is open to horseback riding. The trail is not groomed or surfaced and may be rough or soft in many sections. Riders must share the trail with motorized vehicles. *Please note that many sections of this trail may still be closed or under construction after heavy damage was sustained due to flooding in 2018.

Tri-County Recreational Corridor (Ashland, Bayfield, and Douglas

Counties)

Length: 60 miles.

Location: Multi-use trail parallels Highway 2 and stretches from Superior to Ashland.

The Tri-County Corridor is an abandoned rail bed trail of pea-sized limestone gravel. Users must share the trail with motorized vehicles.

MULTI-USE PAVED TRAILS

Millennium Trail

Length: 1.6 miles out and back.

Parking: 28th/Wyoming Avenue

10 foot wide paved trail that meanders through the Superior Municipal Forest. Trail difficulty: Easy. Type: Out and back trail.

Osaugie Trail

Length: 5.2 miles

Parking: Welcome Center Parking Lot

Asphalt paved trail along Superior or Bay towards the Intersection of Highway 2/53 on the East side of Superior to Moccasin Mike Road. Trail Difficulty: Easy. Trail Type: Out and back trail.

MOUNTAIN BIKING TRAILS

Mont Du Lac

Length: 5+ miles.

Location: 3125 S. Mont Du Lac Road, Superior

Various single-track mountain bike courses consisting of leg burning climbs and screaming descents. Enjoy gorgeous views of Jay Cook State Park and the St. Louis River Valley. Trail Difficulty: Intermediate to advanced. Trail Type: Single track loops. Fees Apply.

Pokegama Trail

Length: 6 miles

Obstacle-ridden trail in the Superior Municipal Forest. Trail Difficulty: Intermediate. Trail Type: Single-track.

Wild Rivers Trail

(Douglas, Barron, and Washburn Counties)

Length: 104 miles (total).

A well maintained, highway-grade compacted gravel and railroad ballast trail that stretches into three counties. The trail is rich in natural resources and wildlife habitat. Trail Difficulty: Easy. Trail Type: Gravel (former railroad grade). Riders must share the trail with motorized vehicles.

OFF HIGHWAY MOTORCYCLE TRAILS

For fun on two wheels, Douglas County has more than five miles of single track off-highway motorcycle trails. These trails connect to more than 45 miles of OHM trails in Minnesota's Nemadji State Forest. Go to douglascountywi.org for more information.

Douglas County is home to more than 100 miles of maintained summer ATV trails. There are also motorized use trails within the City of Superior.



Millennium Trail- Superior Municipal Forest

NO PAPER TRAILS

Just scenic ones!

The tip of
Lake Superior is
tops for fun!



Hundreds of miles of great
ATVing and snowmobiling
await you in Superior and
Douglas County, Wisconsin.

TRAVEL
Superior

Special Lodging Rates
800-942-5313
TravelSuperior.org



ATV & SNOWMOBILE TRAILS

With more than 100 miles of maintained summer routes, Superior and Douglas County is the perfect destination for your ATV or UTV getaway. Trails connect throughout the City of Superior and directly to the county trails making it easier than ever to stay and play.

Douglas County is connected to neighboring counties and states via corridor trails, including the Gandy Dancer State Trail, Saunders State Trail, Wild Rivers State Trail, and Tri-County Corridor.

When the temperature drops, we become home to more than 300 miles of groomed snowmobile trails. Trails are well maintained and kept in great condition, and you will find many trailside dining and lodging options that welcome snowmobile enthusiasts with open arms. One of the best ways to see Douglas County is from the back of a sled!

Gandy Dancer State Trail - Northern Segment

In total, the Gandy Dancer State Trail is 98 miles long and crosses into Minnesota. About 15 miles of the trail run through the northern segment of Douglas County. The trail meets up with the Saunders State Trail just south of Superior. The trail is also open to cross-coun-

try skiing and snowshoeing but is not groomed for these activities.

Saunders State Trail

This trail starts near the intersection of State Highway 35 and County Highway C just south of Superior and passes through eight miles of Douglas County before crossing into Minnesota. ATVs are allowed on the trail year-round. The trail is also open to cross-country skiers and snowshoers, but is not groomed for these activities.

Wild Rivers State Trail

An integral piece of Northwest Wisconsin's interconnected snowmobile trail network, The Wild Rivers State Trail is more than 100 miles long and runs through Douglas, Barron, and Washburn Counties. Like the Gandy Dancer and Saunders State Trails, the Wild Rivers State Trail is open to ATVs year-round, as well as other recreational opportunities.

Tri-County Corridor

This trail is your connection from Superior to the City of Ashland. The trail runs on more than 60 miles of improved railroad grade and parallels US Highway 2. The trail passes through forested areas, but is not on

state forest property.

Planning Ahead

For the most up-to-date version of the Douglas County ATV or snowmobile trail maps, please call the Superior-Douglas County Welcome Center at (800) 942-5313 or (715) 392-2773.

For licensing information, and ATV/Snowmobile safety course information please go to dnr.wisconsin.gov.

Be sure to research area conditions, rules, and regulations before hitting the trails for a safe and happy trip!

Trail Conditions Report

Current trail conditions in Summer and Winter seasons are updated regularly on our website. You can find the all season trail conditions report at bit.ly/TSTrailReport or call the 24/7 Douglas County Trail Hot line at (715) 378-4528.

Northwest Trails Association

The Northwest Trails Association is made up of 11 local member clubs which develop and maintain Douglas County's snowmobile and ATV/UTV trails. Their hard work and dedication make our trails some of the best in Wisconsin! Find them online at facebook.com/nwtrailsassociation/



WINTER RECREATION

Winter is no time to hibernate - get out and enjoy the beauty of Douglas County's snowy season! Whether you prefer to take in the smells, sights and sounds of a peaceful snowshoe or ski through the woods, or choose to enjoy the thrill of the catch while ice fishing, Douglas County has plenty of cold weather activities to keep you moving all winter long.

cross-country ski trails for both classical and skate skiing. Various loops provide a variety of terrain. Difficulty: Suitable for both beginning skiers and those with advanced skills.

cross-country ski trails between the Towns of Solon Springs and Gordon just off Highway 53. Trails are groomed during the winter season for classic track skiing. Difficulty: Easy.

Douglas County Trails

Length: 10+ miles, four loops. Trail Douglas County grooms and maintains more than 10 miles (17 km) of

Superior Municipal Forest

Length: 22+ miles (35.4 km), eight loops.

CROSS COUNTRY SKIING

Douglas County is home to more than 30 miles of groomed cross country skiing trails, located throughout the area. The scenic trails appeal to everyone from beginner to advanced skiers.

Brule River State Forest After-hours Trail

West of Brule on the Afterhours Road, just south of US Highway 2 (715) 392-5678

dnr.wi.gov/topic/StateForests/BruleRiver/

Length: 25 km (15.5 miles).

Afterhours Ski Trail includes an extensive network of some of the region's finest and best maintained



After Hours Trail - Brule River State Forest

Trails are tracked and groomed for both skate and classic skiing. Difficulty: Beginner to advanced.

Pattison State Park
6294 South State Road 35
Superior, WI 54880
(715) 399-3111
dnr.wi.gov/topic/parks/name/pattison/

When snow conditions permit, the park maintains three trail loops for cross-country skiing. Trail difficulty levels range from beginner to moderate. The loops begin at the campground.

- *Red loop, 2 miles:* This beginner-rated trail can be accessed from the ski trail parking lot in the southwest end of the outside campground loop and offers the flattest terrain.

- *Blue loop, 4.5 miles:* This trail is more advanced and follows the Black River. It will take you past an old Martin Pattison logging camp site situated along the Black River near Little Manitou Falls. The trail can be accessed from the ski trail parking lot in the southwest end of the outside campground loop and offers several hills.

- *Orange loop, 5.5 miles:* This is the most advanced trail and follows the blue loop for most of the way with a small loop that goes past the ski trail shelter. The trail can be accessed from the ski trail parking lot in the southwest end of the outside campground loop and offers several hills.

SNOWSHOEING

When the snow falls, trade in your hiking boots and strap on the snowshoes. Several of our great hiking trails transform into snowshoe trails once the ground is covered in white, fluffy snow.

Amnicon Falls State Park

Length: 1.5 miles.

Trail Type: loop.

Trail doesn't have access to the

river but provides a convenient way to enjoy some of the remote areas of the park in winter. The trail is fairly flat with some steeper segments in and out of the ancient river valley.

Historic Bayfield Road Trail

Length: 2.25 miles.

This Brule River State Forest trail is historically significant. Along this route the first road between Superior and Bayfield was built in 1870. It was then used to transport freight, mail, and passengers until it was replaced by the railroad in 1885.

Pattison State Park

Pattison State Park has a number of informal trails available for snowshoeing in the winter.

North Country National Scenic Trail

Length: 40 miles

The entire trail stretches 4,600 miles from North Dakota to Vermont and is the longest hiking path in the United States. The trail passes in the footsteps of native people and fur traders as it crosses the historic Brule-St. Croix Portage.

Three state trails, which are primarily used by snowmobiles and ATVs, are also open to snowshoeing and cross country skiing. However, the trails are not groomed, and skiers and snowshoers must share the trail with snowmobiles.

ICE FISHING

Superior and Douglas County is home to over 40 lakes and 150



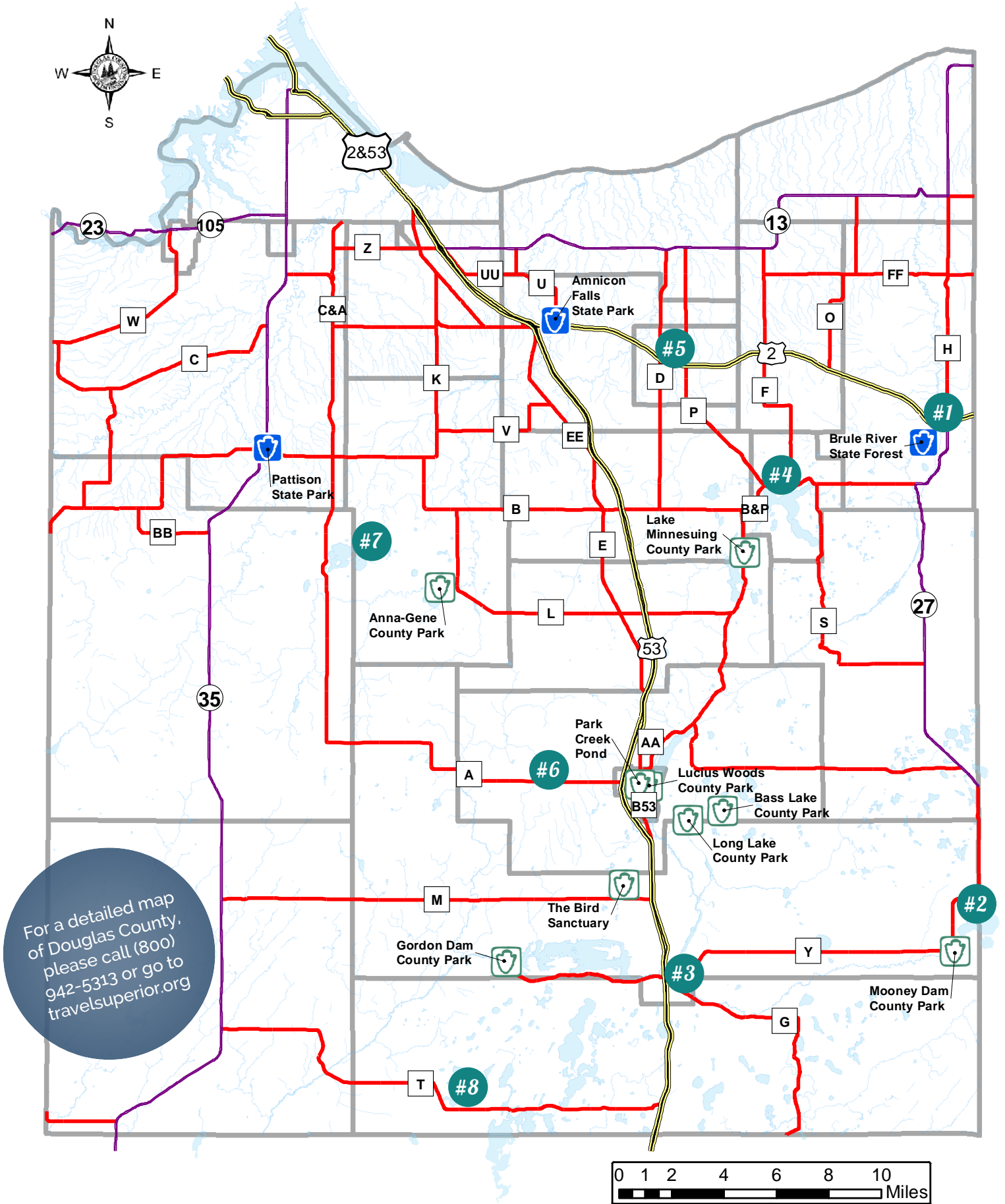
miles of rivers and streams, which all freeze over in the winter! Be sure to be current with your Wisconsin DNR Fishing License before heading out!

ICE SKATING

Superior is home to seven outdoor skating rinks. Rinks are normally open the first day of winter break for the Superior School District and open until weather permits. Each rink is closed one day a week for flooding. Warming shelter/portable toilet is available at each location.

- Allouez - 3631 E 2nd Street
- Billings Park - 18th Street and New York Avenue
- Carl Gullo Park - 510 26th Avenue East
- Pattison - 1016 Faxon Street
- Red Barn - 901 East 6th Street
- South End - 5902 Weeks Avenue
- Wade Bowl - 1228 Clough Avenue

DOUGLAS COUNTY MAP



OUR COMMUNITIES

#1 Brule brule-wi.org

Once a timber boomtown, the quiet community of Brule straddles US Highway 2, the multi-use recreational Tri-County Corridor and the internationally known Bois Brule River.

Not only is Brule a destination for serious fly fishermen from around the world, but it is also the jumping off spot for canoeing and kayaking on the river and hiking, cross country skiing, snowmobiling, ATVing, and snowshoeing in the Brule River State Forest.

#2 Eau Claire Lakes eauclairelakes.com

The Eau Claire Chain of Lakes is made up of 11 connected spring-fed, clear water lakes. The three larger lakes, Upper Eau Claire, Middle Eau Claire and the Lower Eau Claire, act as the focal point, with eight smaller spring-fed lakes, linked and feeding into them.

Fishing is excellent in the spring and the fall. The lakes support a good population of game fish, including muskellunge, northern and walleye pike, small and largemouth bass, with crappies, bluegills, sunfish, and perch rounding out the species. Good trout fishing can be enjoyed in the area's rivers and streams.

#3 Gordon gordonwi.us.com

Gordon is a vacation paradise offering year-round activities including boating, fishing, snowmobile and ATV trails, cross-country skiing, and some of the best hunting in Wisconsin. Enjoy the crystal blue waters, where the Eau Claire and St. Croix rivers meet, surrounded by the hardwood forests and vivid wild flowers.

#4 Lake Nebagamon villagelakenebagamon.com

The quaint village of Lake Nebagamon is more than 100 years old and its origin in the logging industry is preserved in its log-constructed auditorium, which is listed on the National Registry of Historic Places. Entertainment for the entire family originates at the heart of this community surrounding its 950-acre gorgeous lake.

#5 Poplar villageofpoplar.com

Located 20 minutes east of Superior on US Highway 2, Poplar lies outside of the "Lake Superior Lake Effect Zone." Quite often the weather is warmer and the sky is sunnier than in the Twin Ports letting golfers enjoy a great day of golf at the Poplar Golf Course.

#6 Solon Springs visitsolonsprings.com

Situated on beautiful 855-acre Lake St Croix, Solon Springs is popular for fishing boating and water skiing. Several boat landings in the village allow easy access to the lake.

Additionally, Solon Springs is music to your ears. Nestled between tall pine trees and the shores of beautiful Lake St. Croix, this community exhibits its many talents at the Lucius Woods Performing Arts Center.

#7 Tri Lakes Area

Amnicon, Dowling, and Lyman Lakes are the backbone for sporting fun in the "Tri-Lakes Area." Amnicon and Dowling Lakes are rated Class A musky lakes as well as offers abundant walleye and bass fishing.

#8 Wascott visitwascott.com

Woods, water, and wildlife – not a dream, but a reality. You need only travel to the southern tip of Douglas County, bordering on Washburn County, to experience what others may only dream of.

With miles of well-groomed recreational trails, more than 100 pristine lakes to fish, swim, and boat, and thousands of acres of forest land where visitors may hunt and hike, it is no wonder that people head "up north" to relax! This is "up north" at its best.

EMERGENCY INFORMATION & USEFUL CONTACTS

Emergency Room & Hospital

Essentia Health

essentiahealth.org
Essentia Health provides world-class health care in a hometown setting to residents of Wisconsin's Douglas County and surrounding communities. Our Superior Locations Include:

Essentia Health St Mary's

Hospital, Clinic, and Pharmacy of Superior
3500 Tower Avenue, Superior
(715) 817-7010

Essentia Health Convenient Care & Pharmacy

2202 E. 2nd Street, Suite 377, Superior
(715) 817-7990

SUPERIOR-DOUGLAS COUNTY AREA CHAMBER OF COMMERCE MEMBERS

St. Luke's Mariner Medical Clinic & Urgent Care
109 North 28th Street East
Superior, WI 54880
(715) 395-3900
(715) 395-3950 (Urgent Care)

Emergency Services

Fire, Police, Medical Personnel
Immediate Response: 911

Road Conditions: 511

Douglas County Sheriff
(715) 395-1371

Superior Police Department
(715) 395-7234

Mayo Clinic Ambulance Service
(218) 628-9323

City and County Services

Douglas County Trail Hotline
(715) 378-4528

Douglas County Forestry
(715) 378-2219

Superior Parks and Recreation Hotline
(715) 395-7299

Wisconsin Department of Natural Resources - Superior Satellite Center

1701 North 4th Street
Superior, WI 54880
(715) 392-7988

Wisconsin State Park System Campsite Reservations
(888) 947-2757

Superior-Douglas County Welcome Center

305 Harborview Parkway
Superior, WI 54880
(715) 392-2773 or (800) 942-5313

Superior-Douglas County Area Chamber of Commerce

205 Belknap Street
Superior, WI 54880
(715) 394-7716

VISIT OUR NEIGHBORS

While we are sure that you'll find tons of great things to do, places to eat and shop, and friendly lodging in Superior and Douglas County, there is also a lot to explore in Duluth — Superior's "twin" port!

The communities of Superior and Duluth are very closely connected, with just the St. Louis Bay separating the two cities.

Across the Bong or Blatnik Bridge, you will find outdoor opportunities, lodging, dining, and more. Just consult our friends at Visit Duluth to find out all that awaits in our twin city!

You may also find information on attractions such as the Glensheen Mansion or find Duluth lodging availability over at TravelSuperior.org.

Further into Minnesota, Black Bear

Casino Resort in Carlton provides plenty of opportunities for entertainment — from gaming and nightclub entertainment to dining, lodging, and more.

For more information on visiting our Minnesotan neighbors, see the contact information below.

Visit Duluth
225 W. Superior Street,
Suite 110
Duluth, MN 55802
(218) 722-4011
(800) 438-5884
visitduluth.com

Visit Duluth provides brochures, directions, and information about Duluth and the surrounding areas to

visitors. If you would like more information on lodging, attractions, sight seeing, restaurants or retail shops, please call their toll-free number to speak with a travel information manager.

Open Year Round
Mon—Fri 8:30 a.m. to 5 p.m.



OPEN SPACES AND BREATHTAKING PLACES



PHOTOGRAPHY CREDITS

Commemorative Air Force Lake Superior Squadron
Page 9

Great Northern Classic Rodeo
Rodeo Photo Page 20

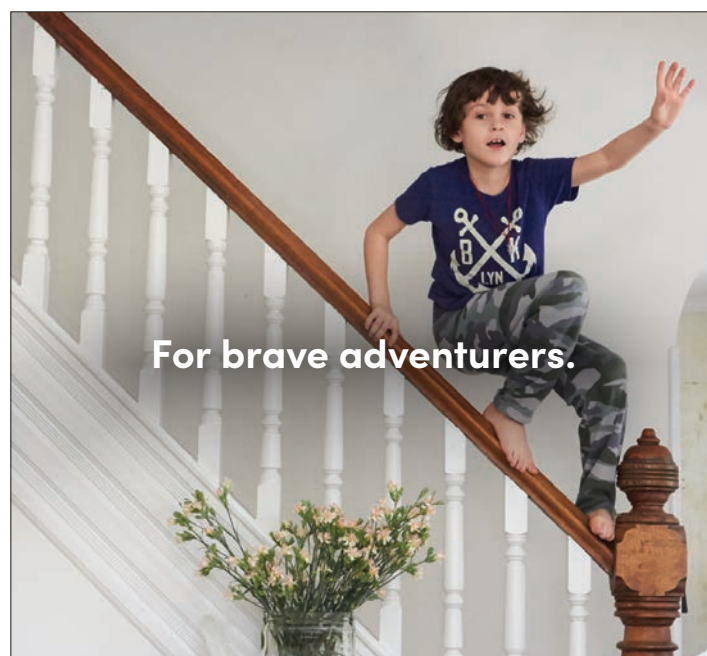
Joe Polecheck Photography
Cover Photo, Page 2, Page 3, Wisconsin Point Map Page 7, City of Superior Map Page 8, Page 11, Lake Superior Ice Festival Photo, Page 20, Woman & Dog Hiking Page 21, Page 23, Page 24, Page 25, Page 27, Page 28, Page 29, Page 31, Page 34 & 35, Back Cover

John Heino Photography
Page 6, Page 15, Page 17, Dragon Boat Photos Page 20, Horton Covered Bridge Photo Page 21,

Lisa Rasmussen
Big Manitou Falls Selfie Stand Photo Page 22

Richard I. Bong Veterans Historical Center
Page 4

Travel Superior
Mural Photo Page 4, Richard I. Bong Veterans Historical Center Page 9, Page 16



**URGENT CARE.
CLOSE IF YOU NEED US.
NOW AVAILABLE IN SUPERIOR**



Essentia Health

St. Mary's-Superior Clinic
3500 Tower Ave | Superior
218-786-3200

SUPERIOR-DOUGLAS COUNTY AREA CHAMBER OF COMMERCE MEMBERS

- 1 Call Telecom
- 7 West TapHouse Superior
- A & W Restaurant
- A&L Properties
- A-1 Movers
- "Action" Acton Team, RE/MAX Results
- AirFiber
- American Family Insurance
- American Family Insurance Lori Ronchi Agency
- American Transmission Company
- AmeriPride Linen & Apparel Service
- AMSOIL INC.
- Anderson & Hammack Construction
- Androy Hotel
- Androy Travel Service
- Angie's Closet, LLC
- Anytime Fitness
- APEX
- Aramark Uniform Services
- ARCO Coffee Company
- Artistic Florals by Leslie
- Aspen Health & Rehab
- Audacity LLC
- Bad Axe Tool Works (Du Nord)
- Barker's Island Inn & Conference Center - WaterFront Grille
- Barker's Island Marina Sailboats Inc.
- Barko Hydraulics, LLC
- Belknap Liquor & Lounge
- Benna Ford Superior LLC
- Benson Electric Company
- Bernick's
- Best Western Bridgeview
- Better City Superior Inc.
- Big Apple Bagels
- Black Bear Casino Resort
- Blaine Business Center
- BMO Harris Bank
- BNSF
- Boarders Inn & Suites
- Boy Scouts, Voyageurs Area Council
- Boys & Girls Club of Superior
- Brule River Canoe Rental
- Brule River Motel
- Buckley, Paul
- Burger King Superior
- Calhoun Companies
- Campbell Lumber
- Carlson Orthodontics
- Carlson's Floor Center Inc.
- CASDA-Center Against Sexual & Domestic Abuse, Inc.
- Cathedral School
- Center for Muscle & Joint Therapy, Inc
- Central Sheet Metal Works Inc.
- Centricity Credit Union
- Century 21 Atwood
- Cetera Advisor Networks LLC - Neill A. Atkins
- Challenge Center
- Charter Communications
- Charter NEX Films, Inc.
- Chartwells - UWS Food Service
- Chippewa Valley Bank
- CHOICE, unlimited
- City of Superior
- CN
- Coldwell Banker East West Realty
- Commemorative Air Force Lake Superior Squadron
- Coordinated Business Systems
- CORE Advantage
- Cragin Machine Shop Inc.
- Cricket Signs
- CubedCorps
- CW Technology
- Dahlberg Light & Power
- Dairyland Power Cooperative
- Dale Carnegie, North Central US
- Dan's Feed Bin, Inc
- Dave Evans Transports, Inc.
- DC Testing
- Diocese of Superior
- discoverpc.NET, LLC
- Doucette's Special Events Rental, LLC
- Douglas County
- Douglas County Abstract & Title LLC
- Douglas County Historical Society
- Downs Funeral Home
- Downs LeSage Funeral Home
- Dreamland Supper Club
- DSC Communications
- Duluth Airport Authority
- Duluth Entertainment Convention Center (DECC)
- Duluth Superior Area Community Foundation
- Duluth Superior Symphony Orchestra
- Duluth Transit Authority
- Dunkin' Donuts
- Eagle Waste & Recycling, Inc.
- Earth Exchange
- East Central Energy Operations Center
- Edward Jones - Jason W. Rolfe, Financial Advisor
- Edward Jones - Matt Christy, Financial Advisor
- Edward Jones - Robyn Lings - Financial Advisor
- Edwards Realty & Finance Co.
- Empire Block, LLC
- Empire Coffee
- Enbridge
- Entrepreneur Fund
- Epicurean Factory Outlet
- Erbert & Gerbert's
- Essentia Health - St. Mary's Superior Clinic
- Essentia Health - Superior East Pharmacy
- Essentia Health - Superior Pharmacy
- Essentia Health Foundation
- Essentia Health St. Mary's Hospital-Superior
- Essentia Health Urgent Care - Superior
- Exodus Global LLC
- Fabick Cat
- Family Forum Inc. Early Head Start/Head Start
- FEN-TECH
- FeraDyne Outdoors
- Field & Connolly, Ltd.
- Financial Recovery Service, Inc.
- Fond-du-Luth Casino
- Four Star Construction Inc.
- Fraser Shipyards
- Friends of the Lake Superior National Estuarine Research Reserve
- Fryberger Law Firm
- Gavilon
- Girl Scouts of Minnesota and Wisconsin Lakes and Pines
- Glensheen
- Globe News/Vinyl Cave
- Grandma's Marathon
- Graymont (WI) LLC
- Great Lakes Office Solutions
- Great Lakes Pipe Service
- Great Northern Classic Rodeo
- Greenfield Communications
- Greg Follmer Commercial
- Real Estate
- Grizzly's Wood Fired Grill
- Gronk's Grill & Bar
- Group Health Cooperative of Eau Claire
- Guadalajara Mexican Restaurant
- Guardian Pest Solutions, Inc.
- Habitat for Humanity (Western Lake Superior)
- Hallett Dock No. 8 LLC
- Halvor Lines, Inc.
- Hammond Steak House
- Hampton Inn - Duluth Canal Park
- Hampton Inn by Hilton Superior
- Happy Tails Animal Hospital
- Happy Tree Productions Inc.
- Harbor House Crisis Shelters - A Ministry of Faith United Methodist Church
- Hawkins Water Treatment
- Head of the Lakes Kennel Club
- Head of the Lakes United Way
- Health Tradition
- Hearing Wellness Center
- Heartwood Resort & Conference Center
- Hill Avenue Dental
- Holden Insurance Agency, Inc.
- Holiday Inn Express Hotel & Suites
- Human Development Center
- Humane Society of Douglas County, Inc.
- Hunt Electric Corporation
- imageOne Uniforms
- Imperium Chiropractic, SC
- Indianhead Credit Union
- Insurance Services
- Inter City Oil Co Inc. ICO
- Interstate All Battery Center
- J.R. Jensen Construction Co.
- JCC Services
- JMR Financial Group Inc.
- Joe Polecheck Photography
- Johnson Insurance Consultants
- Kari Toyota
- KBJR-TV
- Kent Precision Foods Group
- Keyport Liquor, Restaurant & Lounge
- Kimmes Oil
- Krech Ojard & Associates,

- Inc.
- Kro Bar & Grill
- Kwik Trip Inc. #135
- Kwik Trip Inc. #171
- Kwik Trip Inc. #189
- Kwik Trip Inc. #203
- Kwik Trip Inc. #222
- Kwik Trip Inc. #267
- Kwik Trip Inc. #864
- LaCrosse Graphics Inc.
- LafargeHolcim
- Lake Superior Area Realtors Inc.
- Lake Superior Chainsaw Sculpture Championship
- Lake Superior Laundry
- Lake Superior Zoo
- Lakehead Concrete Works Inc.
- Lakehead Constructors Inc.
- LaPeinado
- Ledin, Olson & Cockerham S.C.
- Lenroot Maetzold Funeral Home
- LHB
- London Road Rental Center
- Lucius Woods Performing Arts Center
- Mac Sport and Marine
- Maranatha: A Christian Classical Academy
- Maria Letsos - Realtor, RE/MAX Results
- Mariner Business Center
- Marsh & McLennan Agency LLC
- Marshall School
- Mayo Clinic Ambulance Service
- Maytag Laundries
- McDonald's Restaurant
- McDonald's Restaurant East End
- Mediqwest Insurance Services, Inc.
- Mellin Promotional Advertising
- Memorial Blood Centers
- Mentor Superior
- Meridian Group Inc. ~ WH-PC-Clifford Lund-Regina Hill Apartments
- Meridian Group, Inc. Bartley Manor/Woodland Way
- Mertz-Rookey Insurance Agency
- Midwest Communications
- Midwest Dental
- Midwest Energy Resources
- Minnesota Power
- Missinne Greenhouse & Landscape
- Movement Mortgage
- National Bank Of Commerce
- Nemadji Golf Course & Grill
- New Horizons Children's Center of Superior, LLC
- New Perspective Senior Living
- Nicolet Law Office S.C.
- North Country Independent Living
- North Shore Mortgage (a division of North Shore Bank)
- North Shore SUP
- North Shore Title
- Northern Engineering
- Northern Land Title Co.
- Northern Trends Building & Design Inc.
- Northland Camping & RV Park
- Northland Chevrolet
- Northwest Outlet
- Northwest Trails Association
- Northwoods Heating & Air Conditioning LLC
- Nummi Jewelers, LLC
- On The Limit
- Osterlund Architects, PLLC
- Oulu Glass LLC
- P & R Properties Twin Ports LLC
- Papa Murphy's Take N Bake Pizza
- Park State Bank
- Pattison/Amnicon Falls State Parks
- Paul Davis Restoration Of The Northland
- Perkins Bakery & Restaurant
- Positively Superior Magazine
- Prime Appliance
- Pro Print Inc.
- Randy's Carpet Cleaning LLC
- Rascal's Professional Pet Grooming
- RE/MAX Results
- Rebecca Shane
- Reliable Insurance Agency
- Residence Inn by Marriott Duluth
- Rich Cuisine & The Wednesday Bakery
- Richard I. Bong Veterans Historical Center
- RIHM Kenworth
- Rivord Repair Center/Dick's Twin Ports Transmission
- Rockwood Insurance Agency
- Rotary Club of Superior
- RSM US LLP
- Salvation Army
- Saratoga Liquor Co., Inc.
- School District of Maple
- School District of Superior
- Scott Wallin CPA SC
- Screen Graphics/Hidden Bay Sports Custom Apparel
- SEH, Inc.
- Senior Connections, Inc.
- Serenity Spa and Salon Featuring Posh Affair Boutique
- Shamrock Bar & Pizza
- Shannon's Stained Glassery
- Shel Don Print and Design
- Silverwood Pet Care
- Small Business Development Center at UW-Superior
- Sound Central, LLC
- Sounds Unlimited Entertainment / Duluth Photo Booth
- South Pier Inn
- Special Olympics - Douglas County Board of Directors
- Spirit Room
- St. Croix Inn
- St. Luke's Mariner Medical Clinic
- Stack Brothers Mechanical Contractors Inc.
- Sterling Silver Studio, LLC
- Strength Factory, LLC
- Studio One Photography
- Super 8 of Superior
- Super One Foods
- Super One Foods-Harborview
- Super One Liquor
- Superior Animal Hospital & Boarding Suites, Ltd.
- Superior Area Professionals
- Superior Business Center
- Superior Business Improvement District (SBID)
- Superior Choice Credit Union
- Superior Chrysler Dodge Jeep Ram
- Superior Council for the Arts
- Superior Days
- Superior Douglas County Family YMCA
- Superior Family Dentistry - Dr. Robert A. Bukowski, D.D.S.
- Superior Flooring
- Superior Glass Inc.
- Superior Housing Authority
- Superior Ice Arena/Superior Amateur Hockey Association
- Superior Inn
- Superior Jaycees
- Superior Lidgerwood Mundy
- Superior Public Museums - Fairlawn, S.S. Meteor, Old Firehouse & Police Museums
- Superior Refinery
- Superior Rehabilitation Center
- Superior Savings Bank
- Superior Telegram
- Superior Vocation Center Inc.
- Superior Water Light & Power Company
- Superior Youth Organization
- Sutherland CBD
- Sweeden Sweets
- T.J.'s Champions Lounge
- Tavern 105
- Telephone Associates/NEX-TERA Communications
- The Alzheimer's Association - MN - ND
- The Calla Lily
- The Development Association
- The Northspan Group, Inc.
- The Pottery Burn Studio
- The Shack Smokehouse Bar & Liquor Store
- The UPS Store #7050
- TKDA
- Tom Wondolkowski
- Townsquare Media - KKCB-KLDJ - KBMX - WEBC
- Transmotion - Parker Store
- Trends Day Spa & Salon
- TriMedia Environmental & Engineering
- Tri-State Business Systems
- TW Wood Designs
- Twin Ports Bid
- Twin Ports Diesel & Auto
- Twin Ports Health Services
- Twisted Pastries Coffeehouse
- Udeen Trucking Inc.
- U-Haul Moving and Storage of Superior
- University of Wisconsin-Superior
- Upper Lakes Foods, Inc.
- Viant Crane
- Villa Marina Health & Rehabilitation Center
- Vintage Italian Pizza
- Vision-Pro Optical
- Visit Duluth
- Visitor Center (Superior/Douglas County) Travel Wisconsin Welcome Center
- Walmart Store
- Wasabi
- Wascott Tourism and Development Association
- Waste Management
- WDIO TV
- White Winter Winery
- Wine Beginnings
- Winter Systems
- Wipfli LLP
- Wisconsin Public Radio/KUWS/WHSA
- WITC-Superior
- World of Wheels Skate Center
- Young Plumbing & Heating Inc.

TRAVEL *Superior*

205 Belknap Street | Superior, WI 54880
www.travelsuperior.org

