

**MARVIN BRAUDE BIKE PATH – VENICE BEACH
SAFETY ENHANCEMENT PROJECT**

Dear Neighbor:

**NOTICE OF MARVIN BRAUDE BIKE PATH FULL CLOSURE
from Marine Street to Washington Boulevard
September 10, 2018, to October 20, 2018**

See map on back side for closure location and bicycle detour route

PROJECT DESCRIPTION

To enhance safety, new signs and pavement markings will be installed along the Marvin Braude Bike Path through the Venice Beach area. The signs and markings will inform bike path users of the curvy sections of the Bike Path, increase awareness of pedestrian crossings, and guide pedestrians onto Ocean Front Walk and bicyclists onto the Bike Path.

CONSTRUCTION HOURS

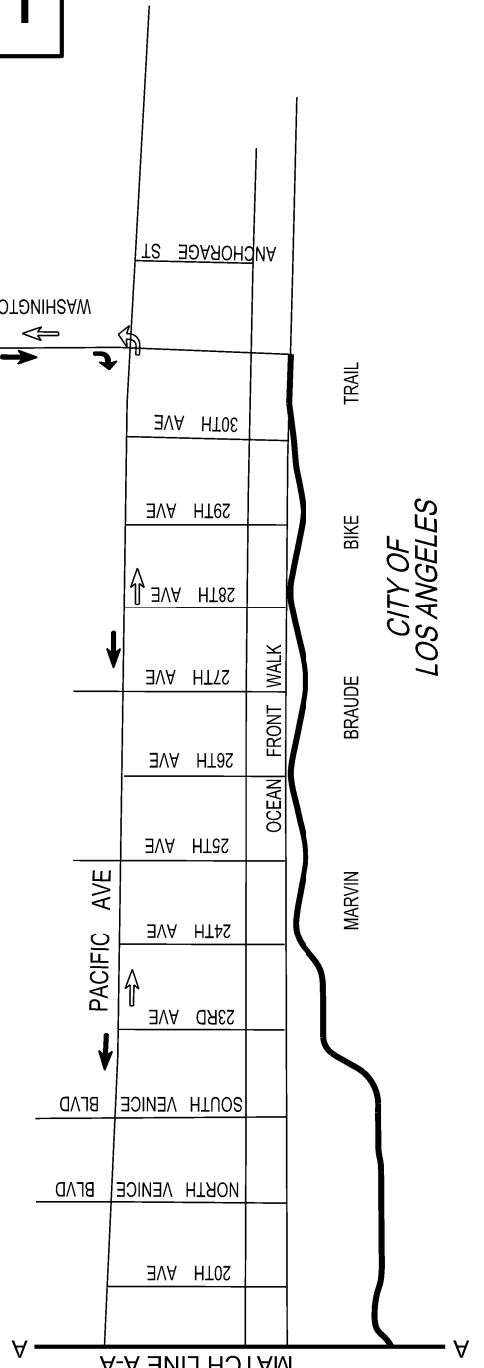
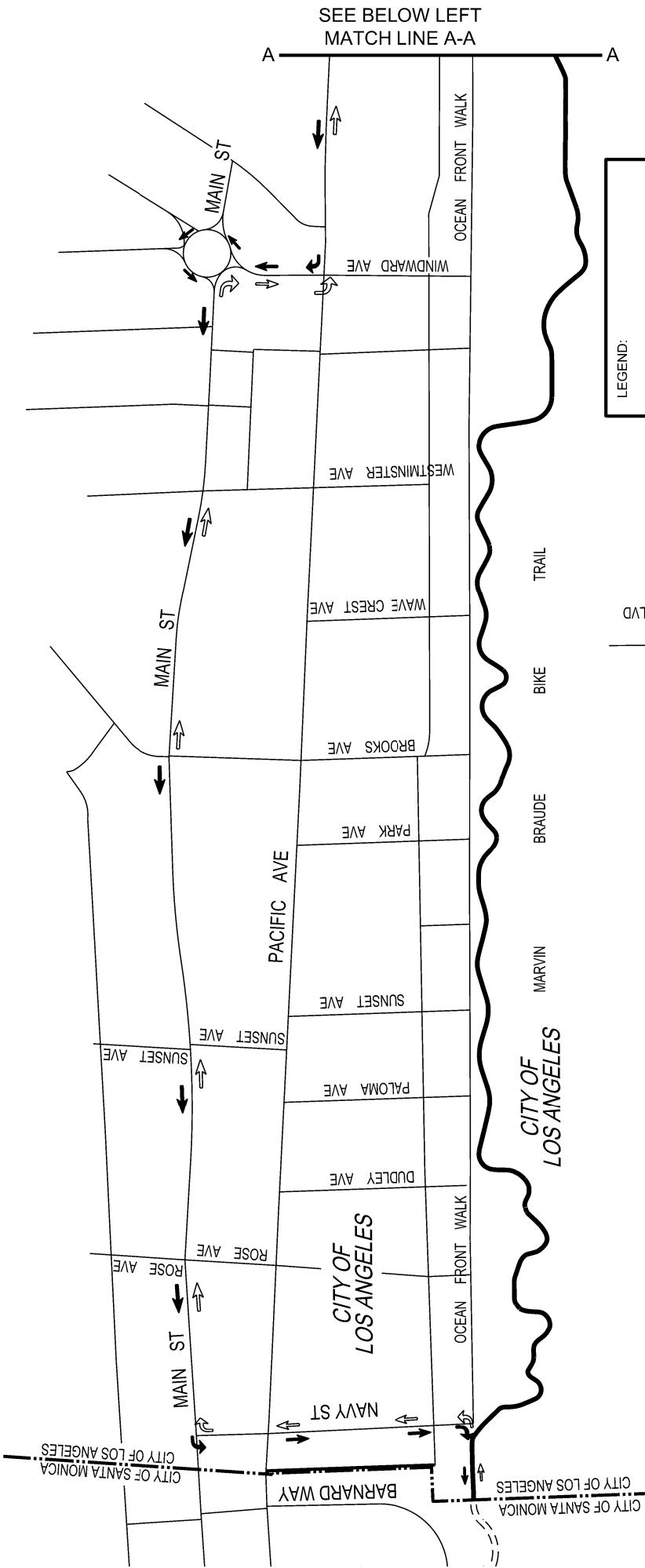
The working hours will be between 7:00 a.m. and 3:30 p.m., Monday through Saturday.

CONTACT

If you have any questions, please contact **Mr. Guillermo Gonzalez**, of the Los Angeles County Department of Public Works, Traffic and Lighting Division, at (626) 300-4696, Monday through Thursday, between 7 a.m. and 5 p.m. Refer to **Project ID RDC0016220, Marvin Braude Bike Path Safety Improvement project**. For hearing assistance, please first dial the California Relay Service at 7-1-1.

Thank you for your patience, cooperation, and understanding during construction activities. We hope you will find the project to be an enhancement to your community.

Para información en Español acerca de este proyecto, por favor llame Sr. Guillermo Gonzalez al (626) 300-4696 (refiérase a Project ID RDC0016220, Marvin Braude Bike Path Safety Improvement project). Nuestras horas de oficina son de 7 a.m. a 5 p.m. de Lunes a Jueves.



CITY OF
LOS ANGELES