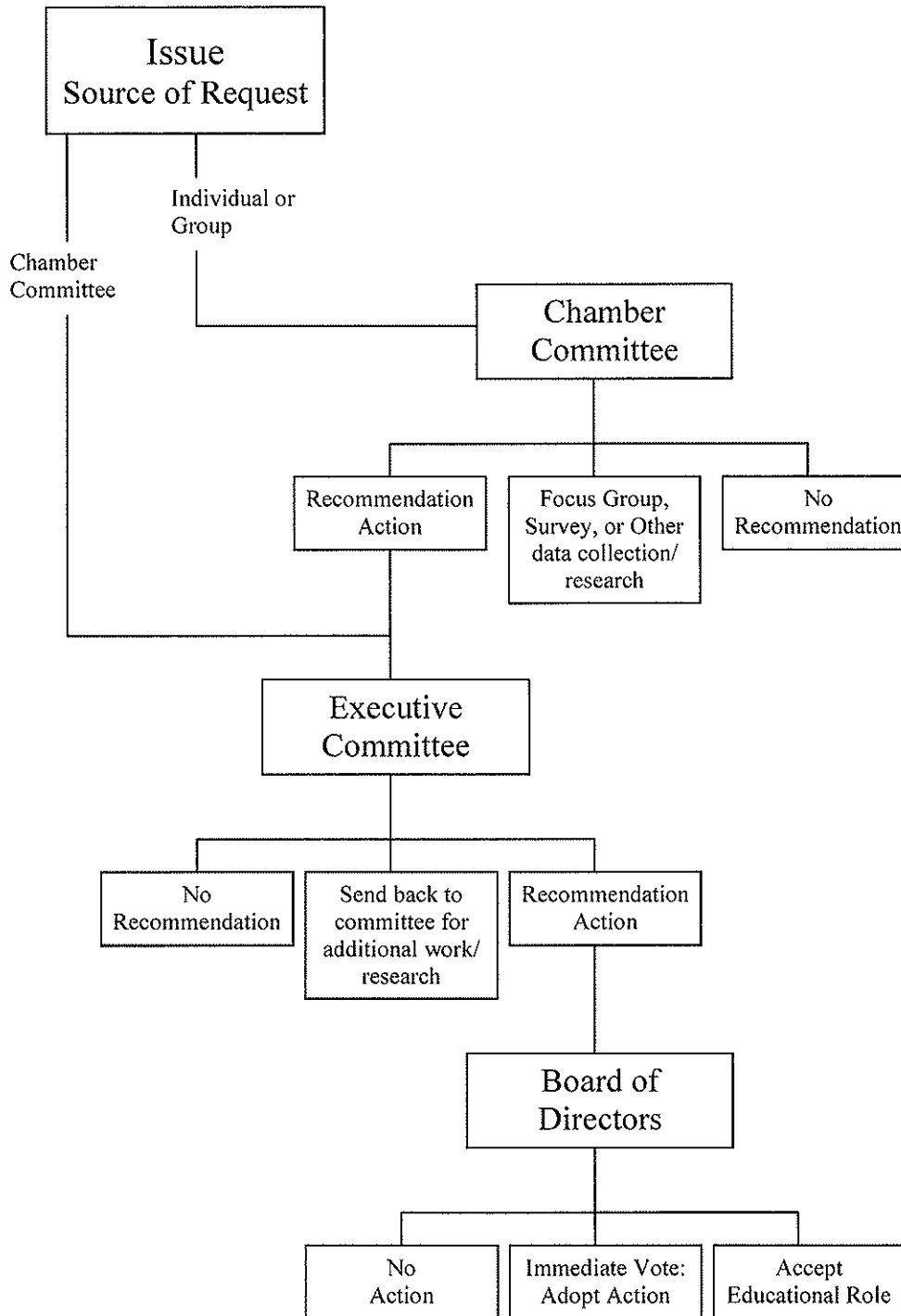




Official Action-On-Issue Process



Winona Area Chamber of Commerce Issue Analysis Chart

INSTRUCTIONS ON FORM USE:

State the issue or question. Answer the following questions.

If any "YES" answers are generated, the question requires further evaluation or action.

STATEMENT OF ISSUE OR QUESTION:

DATE: _____

- Does the issue affect the members of the Winona Area Chamber of Commerce?
- Does the issue promote the healthy business or tourism climate in the Winona area?
- Does the issue damage the healthy business or tourism climate in the Winona area?
- Does the issue offer tools and skills for business people to help them improve their business?
- Does the issue offer a new avenue for networking opportunities with other area businesses?
- Does the issue relate to economic or community development?
- Should the Chamber Membership be polled on this issue?

YES NO N/A

YES	NO	N/A

Notes or Comments:
