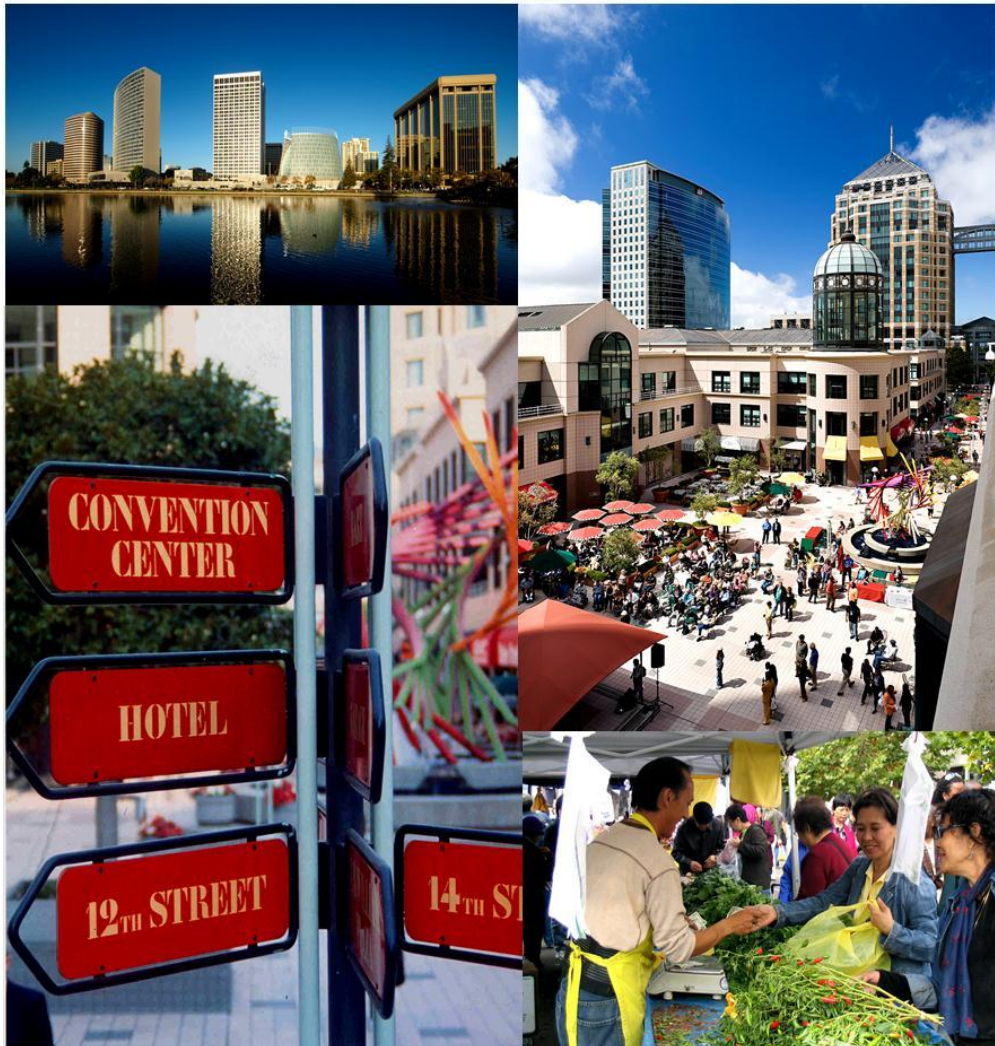


Oakland Relocation Guide



Brought to you by:



Table of Contents

| | |
|---|-----------|
| Neighborhoods | 3 |
| Economic Facts | 7 |
| Utilities & Services | 8 |
| Education | 9 |
| Hospitals | 10 |
| Senior Services | 11 |
| Golf Courses, Wineries & Museums | 12 |
| Restaurants | 13 |
| Attractions & Sports | 14 |
| Hotels | 15 |
| Transportation | 17 |
| Post Offices & Libraries | 18 |
| Parks & Trails | 19 |

Neighborhoods

Downtown Oakland



Roughly bounded by freeways 980 to the west and 880 to the south, and Grand Avenue to the north, and Lake Merritt to the east, Downtown Oakland is the economic center of the city. In this area, you'll encounter hotels from the 1870s converted into

offices and shops in Old Oakland; portions of a repurposed elegant 1930s Art Deco shopping district along both Broadway and Telegraph; the lively (and tasty!) Chinatown; the twin towers of the federal building built in the early 1990s; and Oakland's oldest skyscraper, the finely adorned alabaster City Hall located at 14th and Broadway. Downtown has recently experienced a slew of newer bars and restaurants opening, especially in the emerging adjacent Uptown neighborhood (north of 14th Street) anchored by the extensively renovated Fox Theater and recently dedicated Remember Them sculpture by Mario Chiodo. Many shops, restaurants and cultural sights are within walking distance of two area BART stations (12th Street City Center, and 19th Street).

Other highlights in Downtown/Uptown include:

African American Museum and Library 659 14th St. (at MLK Jr. Way)

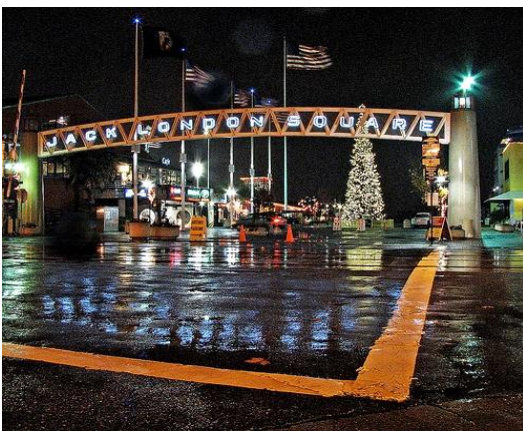
Museum of Children's Art: 538 9th St. (between Washington and Clay)

Oakland Ice Center: 519 18th St. (between Telegraph and San Pablo Ave)

Preservation Park and Pardee Mansion: A microcosm of Oakland's past, this gated park showcases the city's architectural history. The mansions on the north have always been at this site; the rest were transported here in the '70s from nearby blocks when threatened by demolition. They sat there with their paint peeling until '88, when work started on the Preservation Park that exists today. Now, the facades of all the houses have been restored, and the interiors house nonprofits and community groups.

1233 Preservation Park Way (between 12th and 14th, and Castro and MLK Jr. Way).

West Oakland/ Jack London Square



West Oakland, the 1869 terminus of the transcontinental railroad, is a neighborhood situated in the northwestern corner of the city, bounded by the Port of Oakland, the San Francisco Bay, and the 880 Freeway. Home of writer Jack London in the late 1890s, the Brotherhood of Sleeping Car Porters union in the 1920s, the neighborhood has a long history of hosting political, social, and artistic movements, including a concentration of jazz and blues clubs on 7th Street in the 1930s and the headquarter of the Black Panther rallies and social programs of the 1960s. Today the area encompasses older Victorian homes in varying states of repair, larger manufacturing and art sites (check out The

Crucible for metallurgy classes) and a smaller, but dedicated dining and art scene (see Brown Sugar Kitchen and Big Art Studios) and a wonderfully landscaped linear recreation site and greenway bike path known as the Mandela Parkway. Adjacent to the West Oakland neighborhood, is the waterfront Jack London Square district, on the southern side of I-880 freeway. Jack London's waterfront wharves are gone, but instead a visitor can watch little yachts, sailboats, ferries, and water taxis float on the estuary; with a great view of the San Francisco skyline and the giant working cranes of the Port of Oakland serving a dramatic backdrop. Jack London Square boasts recently renovated public spaces, an emerging night market event series, many connections to recreational hike and bike trails, and a constantly evolving commercial life including wholesale produce markets, lively jazz clubs (be sure to check out Yoshi's), waterfront hotels, high-end restaurants, new residential lofts, and hi-tech office spaces.

Temescal

The Temescal is one of the city's oldest and most storied neighborhoods that continues to reinvent itself today. Over the course of its long existence, Temescal has been host to Lusk Cannery, one of the world's largest fruit and vegetable packers in the last half of the 19th century. The Lusk grounds included a blacksmith, stables and men's and women's dormitories for the hundreds of employees (today, the Department of Motor Vehicles on Claremont Avenue occupies the spot boasting a festive Sunday Farmer's Market). A Little Italy thrived on Telegraph Ave (the iconic Genova Delicatessen bears witness to that legacy today) along with a cluster of Ethiopian and other North African restaurants and businesses. The arrival of elevated Highway 24 in the 1960s redrew the western boundary of Temescal, while Broadway continues to define the eastern limits of the neighborhood; 51st Street, more or less, provides the northern border, and 40th Street and Koreatown the southern. Anchored on opposite end by the nearby Children's Hospital and the ever-central MacArthur BART station, Temescal is experiencing a revival. The main business corridor of Telegraph Avenue is bustling with trendy shops, cutting edge restaurants, hipster art galleries, and young families with children who play in the nearby Frog Park which features a reconstructed riparian habitat of Temescal Creek.



Lakeshore, Grand Avenue, Lake Merritt & Adam's Point



The Grand-Lakeshore district is the crossroads of Oakland and one of the oldest residential districts in the city and is easily recognizable by the large Grand Lake Theater (and accompanying 1920s era sign) at its heart. Several bus lines pass through this part of town, and the diversity of the neighborhood here reflects that. Students, seniors, families, young and old professionals and anyone else you can think of spends time here especially on Saturday at the Splash Pad Park Grand Lake Farmers' Market. The district is also just a short walk from Lake Merritt, Oakland's "crown jewel," making it a great place to stop before or after a leisurely stroll along water (a paved 3 mile trail circles the full lake). The

length of Grand Ave that creates one side of the Grand-Lakeshore district runs from the 580 Freeway north to Weldon Avenue, and the Lakeshore Avenue shopping and dining strip is a shorter tree-lined street that makes a great place to stroll, eat, and window shop. The residential neighborhoods of Adam's Point (at the north end of the

lake) and taller luxury apartment towers at the edge of the lake boast great views, especially of the jeweled string of lights that encircle Lake Merritt at night.

Rockridge

Rockridge is a residential neighborhood located at the foot of the Oakland Hills between Alcatraz Avenue and Berkeley to the north and 51st Street to the south, and between Telegraph Avenue to the west and Broadway to the east. The area exhibits well-preserved cottage and bungalow architecture typical of the 1920s and 1930s and many charming leafy streets, lovely gardens, and pocket parks. The Rockridge BART station is located in the center of the district providing easy access to San Francisco and the area's main thoroughfare, College Avenue, which hosts a wide selection of cafes, independent bookstores, house ware stores and many antique and modern furniture boutiques.



Piedmont



Located in the East Bay hills, Piedmont is a small residential community surrounded on all sides by the city of Oakland. The City of Piedmont is almost entirely zoned for single family dwelling residential use. Piedmont has minimal commerce compared with statistically similar cities, and relies primarily on real estate property taxes as a base (that are not shared with Oakland). Piedmont does have the small commercial district located on Highland Avenue and a small number of businesses are found on Grand Avenue near Piedmont's southwest border with Oakland.

Piedmont provides its own fire and police services but does not have its own public library or federal post office; these services are shared with Oakland. Piedmont the city isn't to be confused with the Piedmont Avenue business district which is located in the City of Oakland and runs between MacArthur Boulevard and Pleasant Valley Avenue. There are many wonderful one-of-a-kind shops and restaurants on Piedmont Avenue like Fenton's Creamery and Piedmont Spring and yoga studios.

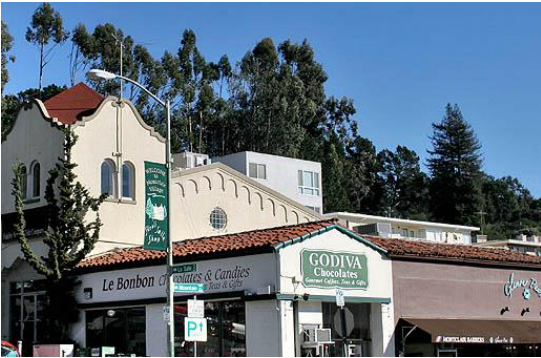
The Laurel District

The Laurel District is situated between the foot of the Oakland hills and Mills College. At the heart of the neighborhood lies MacArthur Boulevard, a bustling shopping area with annual festivals and many local shops. The Laurel arches on MacArthur Blvd. greet visitors where MacArthur intersects 35th Avenue and High Street from the nearby exit from Interstate 580. To the north of 35th Avenue runs Coolidge Avenue, separating Laurel from its residential neighbor, the Dimond District (pronounced: Diamond). Once an agricultural area of orchard farms and ranches, the Laurel attracted mostly German immigrants in the 1920s, drawn to the sunny climate and rural landscapes. In succeeding decades more homes were built, businesses continued to open, and a very diverse population came to call the Laurel District home. The commercial area extends along MacArthur Blvd., from High Street to Fruitvale Avenue as it leaves Laurel and enters the Dimond District. Both the Laurel and the Dimond Districts have come to reflect many differing cultures and offers a wide array of products and services and provide a more affordable (and sunnier) option for housing in Oakland than Rockridge or Piedmont.



Montclair

Montclair (also known as Montclair Village) is a wooded hillside neighborhood located in the Oakland Hills east of Piedmont in a valley. The general boundaries are Highway 24 to the north, the city of Piedmont border to the west



of Highway 13, Skyline Boulevard to the east, and Joaquin Miller Road to the south. The center of the neighborhood is a compact shopping district known as Montclair Village, which is located next to Highway 13 in the bottom of the valley. Montclair is generally characterized by winding streets and single-family houses ranging from hillside cottages, large homes, mansions, estates and a few small apartment and condo complexes mainly in the Village area. The neighborhood includes several of the highest ranked public schools in Oakland, access to the vast neighboring East Bay Regional Park land, and features a jazz fest

in the summer. Fun fact: Dave Brubeck, an American jazz pianist and composer, built and lived in a Montclair house in the 1950s (Source: Mark Meyers, Bev Thorne: Brubeck Home Designer, 2010, Wikipedia: Montclair Village).

Oakland Hills

The Oakland Hills neighborhoods comprise the highest elevations within the city's land area, including all of Oakland lying east of State Route 13 and east of I-580 south of its junction with Route 13. The area includes the Upper Rockridge, Oakmore, Montclair and Mountain View Cemetery neighborhoods. The Oakland Hills area also touches the eastern border of the City of Piedmont, a section of the Claremont Hotel and the northern section of the East Bay Regional Park Districts' Lake Chabot Regional Park, the Robert Sibley Volcanic Regional Preserve, Huckleberry Botanic Regional Preserve, Redwood Regional Park and Anthony Chabot Regional Park. The Hills are popular destinations for hikers and road bikers, boast spectacular bay views and a secluded atmosphere. Activities near the Oakland Hills include the Woodminster Amphitheater, Chabot Space and Science Center, and the award-winning Oakland Zoo.



Economic Facts

2010 Census Information on Oakland, CA

Population

2010 Census 390,724

Area

Land in Square Miles, 2010 55.79 Land

Median Age

36.2

Employment

Percent Unemployed 10.1%

Mean nonfamily income (dollars) \$55,817

Median Household Income \$49,721

Housing

Median value of owner-occupied housing units 2006-2010 \$528,600

Crime

Violent Crime Rate, 2010 15.3 (per thousand people)

Homicides in 2011 103

Business

Total # of firms 2007 39,382

**This 2010 census information was provided by the United Census Bureau at
<http://quickfacts.census.gov/qfd/states/06/0653000.html>**

Utilities & Services

Gas & Electricity

Pacific Gas & Electric Co. (PG&E)

1919 Webster St., Oakland

www.pge.com

(800) 743-5000

(800) 652-4712 (Speech/Hearing Impaired)

(800) 874-9426 (Multi-Lingual Service)

Garbage

Waste Management of Alameda County

172 98th Ave., Oakland, CA

www.wm.com

(510) 430-8509

Water & Sewer

East Bay Municipal Utility District

375 11th St., Oakland, CA

www.ebmud.com

(866) 403-2683

Telephone/Cable/Internet

AT&T

www.att.com

(800) 310-2355

Comcast

www.comcast.com

(800) 945-2288

(800) 266-2278

DMV Offices

Oakland DMV Office

5300 Claremont Avenue

Oakland

(800) 777-0133

Oakland Coliseum DMV Office

501 85th Avenue

Oakland

(800) 777-0133

Education

Public Schools:

Oakland Unified School District

1025 Second Ave.
Oakland, CA 94606
(510) 879-8200
<http://publicportal.ousd.k12.ca.us/>

Private Schools:

Holy Names University

3500 Mountain Blvd.
Oakland, California 94619
(510) 436-1000
<http://www.hnu.edu/>

Samuel Merritt University

3100 Telegraph Ave.
Oakland, CA, 94609
(510) 869-6511
<http://www.samuelmerritt.edu/>

Mills College

5000 MacArthur Blvd.
Oakland, CA 94613
(510) 430-2255
<http://www.mills.edu/>

Bishop O'Dowd High School

<http://www.bishopodowd.org/>
9500 Stearns Ave.
Oakland, CA 94605
(510) 577-9100

Colleges & Universities:

University of California, Berkeley

133 Doe Library
Berkeley, CA 94720
(510) 642-6000
<http://berkeley.edu/>

California State University, East Bay

25800 Carlos Bee Boulevard
Hayward, CA 94542
(510) 885-3000
<http://www20.csueastbay.edu/>

Chabot College

25555 Hesperian Blvd.
Hayward, CA
(510) 723-6600
<http://www.chabotcollege.edu/>

Laney College

900 Fallon St.
Oakland, CA
(510) 834-5740
<http://www.laney.edu/wp/>

Merritt College

12500 Campus Dr.
Oakland, CA
(510) 531-4911
<http://www.merritt.edu/>

Ohlone College

(510) 659-6000
<http://www.ohlone.edu/>

Berkeley City College

2050 Center Street
Berkeley, CA 94704
(510) 981-2800
<http://www.berkeleycitycollege.edu/wp>

Hospitals

Alta Bates Summit Medical Center

350 Hawthorne Ave., Oakland

(510) 655-4000

<http://www.altabatesummit.org/>

Kaiser Permanente

280 W. MacArthur Blvd., Oakland

(510) 752-1000

<http://mydoctor.kaiserpermanente.org/ncal/facilities/region/eastbay/>

Children's Hospital

747 52nd St. Oakland

(510) 428-3000

<http://www.childrenshospitaloakland.org/>

San Leandro Hospital

13855 East 14th St., San Leandro

(510) 357-6500

<http://www.edenmedicalcenter.org/>

Fruitvale Healthcare Center

3020 East 15th St., Oakland

(510) 261-5613

St. Rose Hospital

27200 Calaroga Ave., Hayward

(510) 264-4000

<http://www.strosehospital.org/>

Senior Services

Senior Living

| | | |
|--------------------------------|---------------------------|----------------|
| AgeSong Lake Merritt | 1800 Madison St. | (510) 903-3600 |
| AgeSong at Lakeside Parke | 468 Perkins Street | (510) 444-4684 |
| Christian Church Homes | 303 Hegenberger Rd., #201 | (510) 632-6712 |
| Monarch Place | 4500 Gilbert Street | (510) 658-9266 |
| St. Paul Towers | 100 Bay Place | (510) 891-8570 |
| Piedmont Gardens | 110 41st Street | (510) 596-2600 |
| Salem Lutheran Home | 2361 East 29th Street | (510) 534-3637 |
| Mercy Retirement Center & Care | 3431 Foothill Boulevard | (510) 534-8540 |
| Grand Lakes Gardens | 401 Santa Clara Avenue | (510) 893-3329 |

Transportation

| | |
|----------------------|----------------|
| AC Transit | (510) 817-1717 |
| Paratransit, Oakland | (510) 238-3036 |
| East Bay Paratransit | (510) 287-5000 |

Senior Centers

| | | |
|--------------------------------|---------------------------------|----------------|
| Downtown Oakland Senior Center | 200 Grand Avenue | (510) 238-3284 |
| East Oakland Senior Center | 9255 Edes Avenue | (510) 615-5731 |
| North Oakland Senior Center | 5714 Martin Luther King Jr. Way | (510) 597-5085 |
| San Antonio Senior Center | 3301 E. 12th Street, Suite 201 | (510) 535-6147 |

Golf Courses, Wineries, & Museums

Golf Courses

| | | |
|-------------------------|-----------------------|----------------|
| Sequoiah Country Club | 4550 Heafey Road | (510) 632-2900 |
| Montclair Golf Course | 2477 Monterey Blvd. | (510) 482-0422 |
| Metropolitan Golf Links | 10051 Doolittle Drive | (510) 569-5555 |
| Claremont Country Club | 5295 Broadway Terrace | (510) 655-2431 |
| Chabot Golf Course | 11450 Golf Links Road | (510) 351-5812 |

Wineries

| | | |
|----------------------------|----------------------|----------------|
| JC Cellars | 55 4th Street | (510) 465-5900 |
| Dashe Cellars | 55 4th Street | (510) 452-1800 |
| Two Mile Wines | 477 25th Street | (510) 868-8713 |
| Stage Left Cellars | 2102 Dennison Street | (510) 434-9930 |
| Maisons Marques & Domaines | 383 4th Street | (510) 286-2000 |
| Irish Monkey | 1017 22nd Avenue | (510) 533-3349 |
| Cerruti Cellars | 100 Webster Street | (510) 550-2900 |
| Urban Legend Cellars | 621 4th St | (510) 545-4356 |
| East Bay Winery Bike Tours | 655 3rd Street | (510) 285-7884 |

Museums

| | | |
|-----------------------------------|--------------------------|----------------|
| Oakland Museum of California | 1000 Oak St. | (510) 318-8400 |
| Oakland Aviation Museum | 8260 Boeing | (510) 638-7100 |
| Chabot Space & Science Center | 10000 Skyline Boulevard | (510) 336-7300 |
| Museum of Children's Art | 538 9th St # 210 | (510) 465-8770 |
| African American Museum & Library | 659 14th Street | (510) 637-0200 |
| Pardee Home Museum | 672 11 th St. | (510) 444-2187 |
| Camron-Stanford House | 1418 Lakeside Dr. | (510) 874-7802 |

Restaurants

A Cote

5478 College Ave., Oakland, CA 94618
(510) 655-6469

B Restaurant

499 9th Street, Oakland, CA 94607
(510) 251-8770

Buttercup Kitchen - Family Restaurant

229 Broadway, Oakland, CA 94607
(510) 444-2976

Chop Bar

247 4th Street, #111, Oakland, CA 94607
(510) 834-2467

Faz Restaurant

1111 Broadway, Oakland, CA 94607
(510) 272-1111

Francesco's Restaurant

8520 Pardee Drive, Oakland, CA 94621
(510) 569-0653

Home of Chicken and Waffles Restaurant & Bar

444 Embarcadero West, Oakland, CA 94607
(510) 836-4446

Il Pescatore

31 Webster St, Oakland, CA 94607
(510) 465-2188

Kincaid's Bayhouse

1 Franklin Street, Oakland, CA 94607
(510) 835-8600

Lake Chalet Seafood Bar & Grill

1520 Lakeside Drive, Oakland, CA 94612
(510) 208-5253

Levende East/Liege Spirits Lounge

481 9th Street, Oakland, CA 94607
(510) 835-4343

Monaghan's on the Hill

2820 Mountain Boulevard, Oakland
(510) 482-2500

Numi Tea Garden

2230 Livingston Street, Oakland, CA 94606
(510) 500-1129

Ozumo Oakland

2251 Broadway, Oakland, CA 94612
(510) 286-9866

Pacific Coast Brewing Co.

906 Washington Street, Oakland, CA 94607
(510) 836-2739

Pican

2295 Broadway, Oakland, CA 94612
(510) 834-1000

Scott's Seafood Grill & Bar

2 Broadway, Oakland
(510) 444-3456

Specialty's Cafe & Bakery

155 Grand Avenue, Oakland, CA 94612
(877) 502-2837

Terrace Room at Lake Merritt

1800 Madison Street, Oakland, CA 94612
(510) 903-3771

Uncle Willie's BBQ & Fish

614 14th Street, Oakland, CA 94612
(510) 465-9200

Wing Town Cafe, Inc

1462 High St, Oakland, CA 94601
(510) 842-3510

Z Cafe & Bar

2735 Broadway, Oakland, CA 94612
(510) 451-2905

Attractions & Sports

Oakland Zoo

9777 Golf Links Road, Oakland

www.oaklandzoo.org/

(510) 632-9523

Chabot Space & Science Center

10000 Skyline Blvd., Oakland

(510) 336-7300

www.chabotspace.org

Oakland Museum of California

1000 Oak St., Oakland

(510) 318-8400

www.museumca.org

Oakland Aviation Museum

8252 Earhart Road

(510) 638-7100

www.oaklandaviationmuseum.org

USS Potomac

540 Water Street, Oakland

(510) 627-1215

www.usspotomac.org

Children's Fairyland

69 Bellevue Ave., Oakland

(510) 452-2259

www.fairyland.org

Golden State Warriors



Oracle Arena

7000 Coliseum Way

Oakland, CA 94632

(510) 569-2121

www.nba.com/warriors/

Oakland Athletics



Oakland Coliseum

7000 Coliseum Way

Oakland, CA 94621

(510) 638-4900

www.oaklandathletics.com/

Oakland Raiders



Oakland Coliseum

7000 Coliseum Way

Oakland

(510) 569-2121

www.raiders.com/

Hotels

Claremont Resort & Spa

41 Tunnel Road, Berkeley, CA 94705
(510) 843-3000
www.claremont-hotel.com/

Clarion Hotel

371 13th Street, Oakland, CA 94612
(510) 279-1700
www.clarionhotel.com/

Coral Reef Inn & Suites

400 Park Street, Alameda, CA 94501
(510) 521-2330
<http://coralreefinn.com/>

Courtyard by Marriott - Downtown Oakland

988 Broadway, Oakland, CA 94607
(510) 625-8282
www.marriott.com/

Executive Inn & Suites - Oakland Waterfront

1755 Embarcadero, Oakland, CA 94606
(510) 536-6633
www.executiveinnoakland.com/

Hawthorn Suites LTD.

1628 Webster Street, Alameda, CA 94501
(510) 522-1000
www.hawthorn.com/hotels

Hilton Oakland Airport

1 Hegenberger Road. Oakland, CA 94621
(510) 635-5000
<http://www3.hilton.com/en/hotels/california/hilton-oakland-airport-OAKHIIHH/index.html>

Holiday Inn Express Hotel & Suites

66 Airport Access Road, Oakland, CA 94603
(510) 569-4400
www.hiexpress.com/hotels/us/en/oakland/

Holiday Inn Hotel & Suites-Oakland Airport

77 Hegenberger Road, Oakland, CA 94621
(510) 638-7777
www.holidayinn.com/hotels/us/en/oakland/

Homewood Suites By Hilton Oakland - Oakland Waterfront

1103 Embarcadero, Oakland, CA 94606
(510) 663-2700
<http://homewoodsuites3.hilton.com/en/hotels/california/>

Jack London Inn

Produce and Waterfront, Oakland, CA 94607
(510) 444-2032
www.jacklondoninn.com/

La Quinta Inn

8465 Enterprise Way, Oakland, CA 94621
(510) 632-8900
www.lq.com/

Oakland Marriott - City Center

1001 Broadway, Oakland, CA 94607
(510) 451-4000
www.marriott.com/hotels/travel/oakdt-oakland-marriott-city-center/

Red Lion Hotel Oakland International Airport

150 Hegenberger Road, Oakland, CA 94621

(510) 635-5300

<http://redlion.rdl.com/>

San Leandro Marina Inn

68 Monarch Bay Drive, San Leandro, CA 94577

(510) 895-1311

www.sanleandromarinainn.com/

The Bellevue Club

525 Bellevue Avenue, Oakland, CA 94610

(510) 451-1000

www.bellevueclub.org

The Inn at Jack London Square

233 Broadway, Oakland, CA 94607

(510) 452-4565

www.innatthesquare.com/

Washington Inn

495 10th Street, Oakland, CA 94607

(510) 452-1776

www.thewashingtoninn.com/

Waterfront Hotel

10 Washington Street, Oakland, CA 94607

(510) 836-3800

www.waterfronthoteloakland.com/

Transportation

Oakland International Airport

1 Airport Drive, Oakland, California 94621

(510) 563-3300

www.flyoakland.com/

BART (Bay Area Rapid Transport)

Connects Oakland to cities around the Bay Area including San Francisco, Daly City, San Leandro, Hayward, Fremont, Castro Valley, Pleasanton/Dublin, Berkeley, Richmond, Lafayette, Walnut Creek, Concord & Pittsburg. To see routes and times, please visit:

www.bart.gov

(510) 465-2278

Ferry

Need to get across the bay? The ferry will take those who want to enjoy a nice scenic route from Oakland to San Francisco either on your way to work or just for a less stressful toll free day!

1141 Harbor Bay Parkway, Alameda, CA 94502

(510) 769-5172

www.eastbayferry.com

Amtrak (Train)

Catch the train at Jack London Square and enjoy the Coast Starlight route that will take you between Los Angeles in Southern California and Seattle, Washington in the north. The train passes through the San Francisco Bay Area, Santa Barbara, Sacramento and Portland, Oregon. Widely regarded as one of the most spectacular of all train routes with exceptional views of the west coast.

www.amtrak.com

(800) USA-RAIL

Bus (Alameda-Contra Costa Transit District)

AC Transit bus will take you to stops throughout Oakland as well as into San Francisco and Berkeley.

www.actransit.org

Post Offices & Libraries

Post Office Locations

195 41st Street
Oakland
(510) 251-3392

490 Lake Park Avenue
Oakland
(510) 251-3102

577 West Grand Avenue
Oakland
(510) 251-3113

4900 Shattuck Avenue
Oakland
(510) 985-3068

1445 34th Avenue
Oakland
(510) 251-3351

388 9th St., # 108
Oakland
(510) 763-3282

UPS Stores

1714 Franklin Street, #100
Oakland
(510) 251-8858

360 Grand Ave.
Oakland, CA
(510) 835-1209

Libraries

Oakland Public Library
125 14th Street
Oakland
(510) 238-3134
www.oaklandlibrary.org

Asian Branch Library
388 9th St., # 190
Oakland
(510) 238-3400
www.oaklandlibrary.org

Cesar E. Chavez Library
3301 East 12th Street, #271
Oakland
(510) 535-5620
www.oaklandlibrary.org

African America Museum & Library
659 14th Street
Oakland
(510) 637-0200
www.oaklandnet.com/

Alameda County Law Library
125 12th St., # 100
Oakland
(510) 208-4800
www.acgov.org/law

Parks & Trails

Parks around the Bay Area:



Map courtesy of East Bay Regional Parks at <http://www.ebparks.org/parks>

Trails around the Bay Area:

- Alameda Creek Trail
- Delta de Anza Regional Trail
- Briones to Mt. Diablo Regional Trail
- Iron Horse Regional Trail
- California Riding and Hiking Trail
- Lafayette-Moraga Regional Trail
- Contra Costa Canal Regional Trail
- Marsh Creek Trail