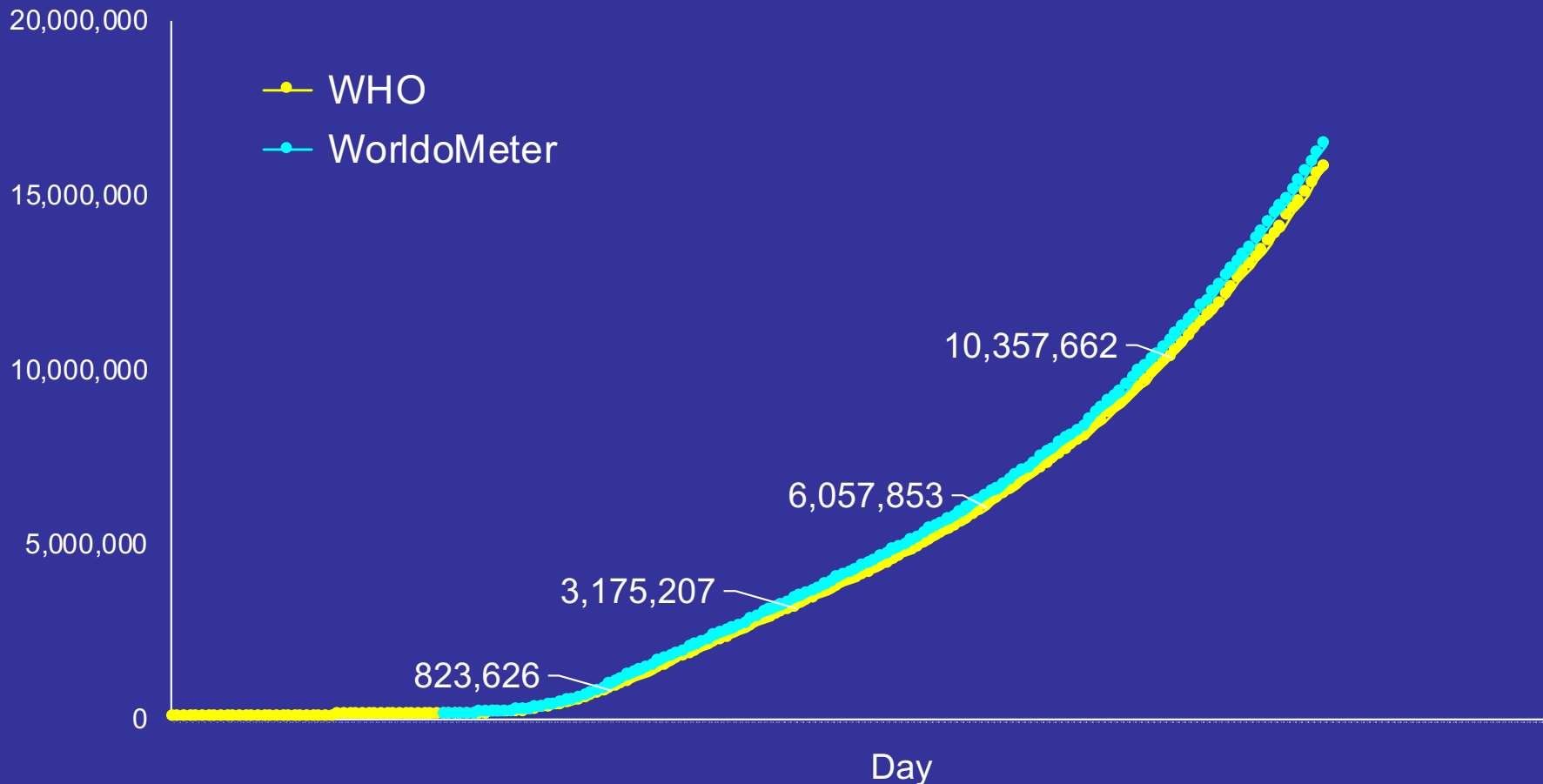


# World COVID-19 Situation Beginning 1/20/20

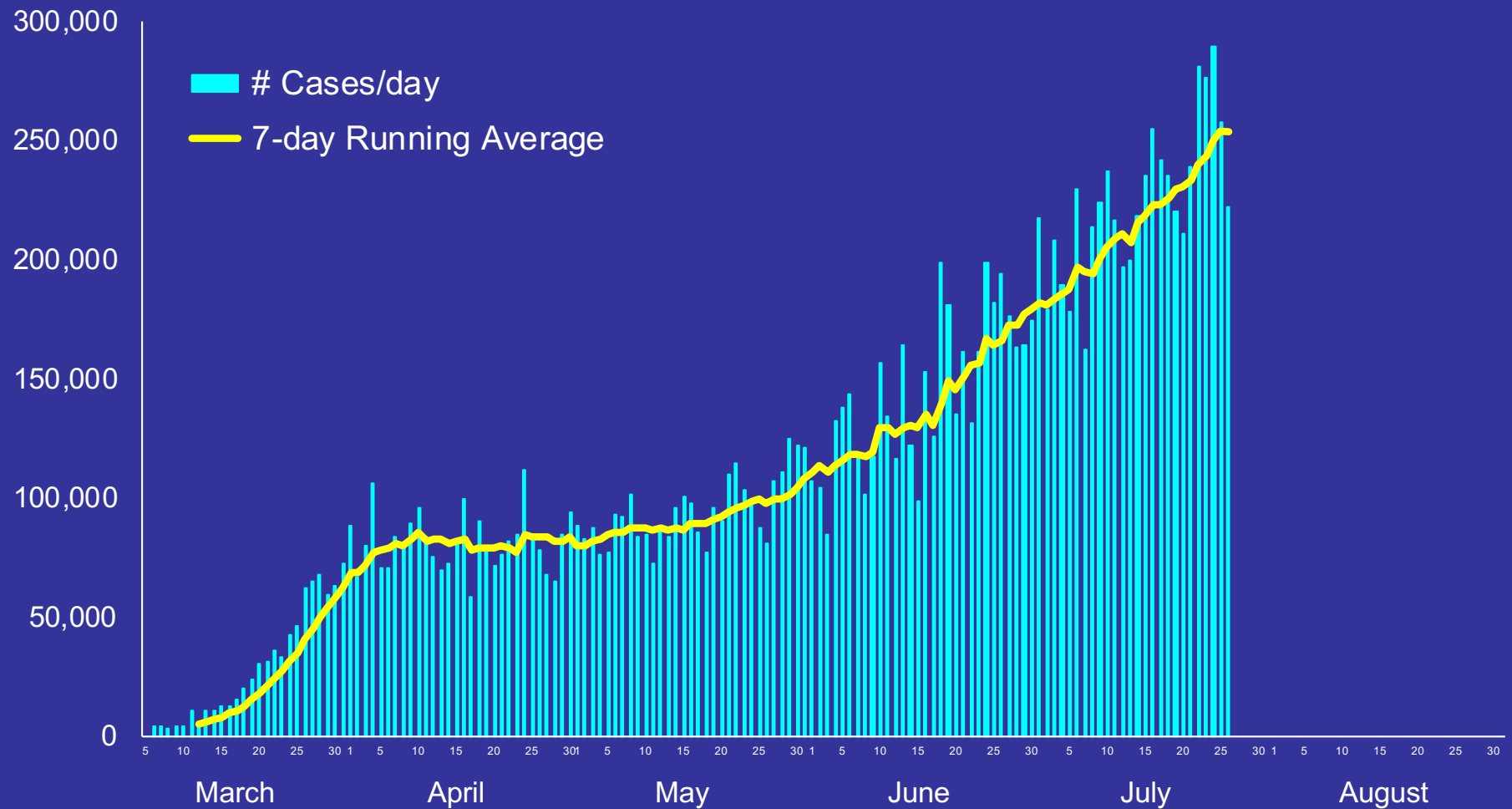
## Cumulative Number of Confirmed Cases



Numbers given for the first of February, March, April, May, June, and July.

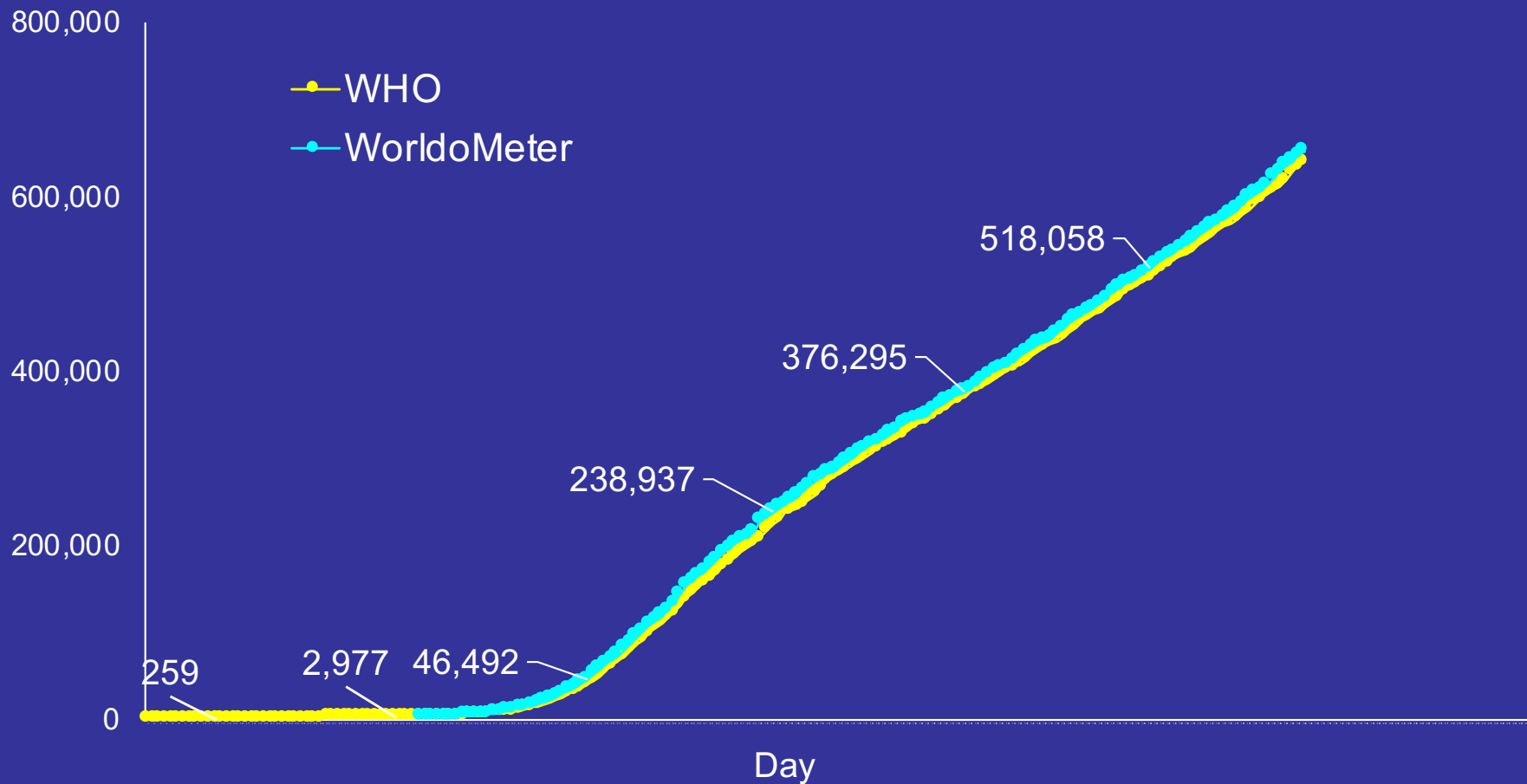
# World COVID-19 Situation

## Number of Newly Confirmed Cases by Day



# World COVID-19 Situation Beginning 1/20/20

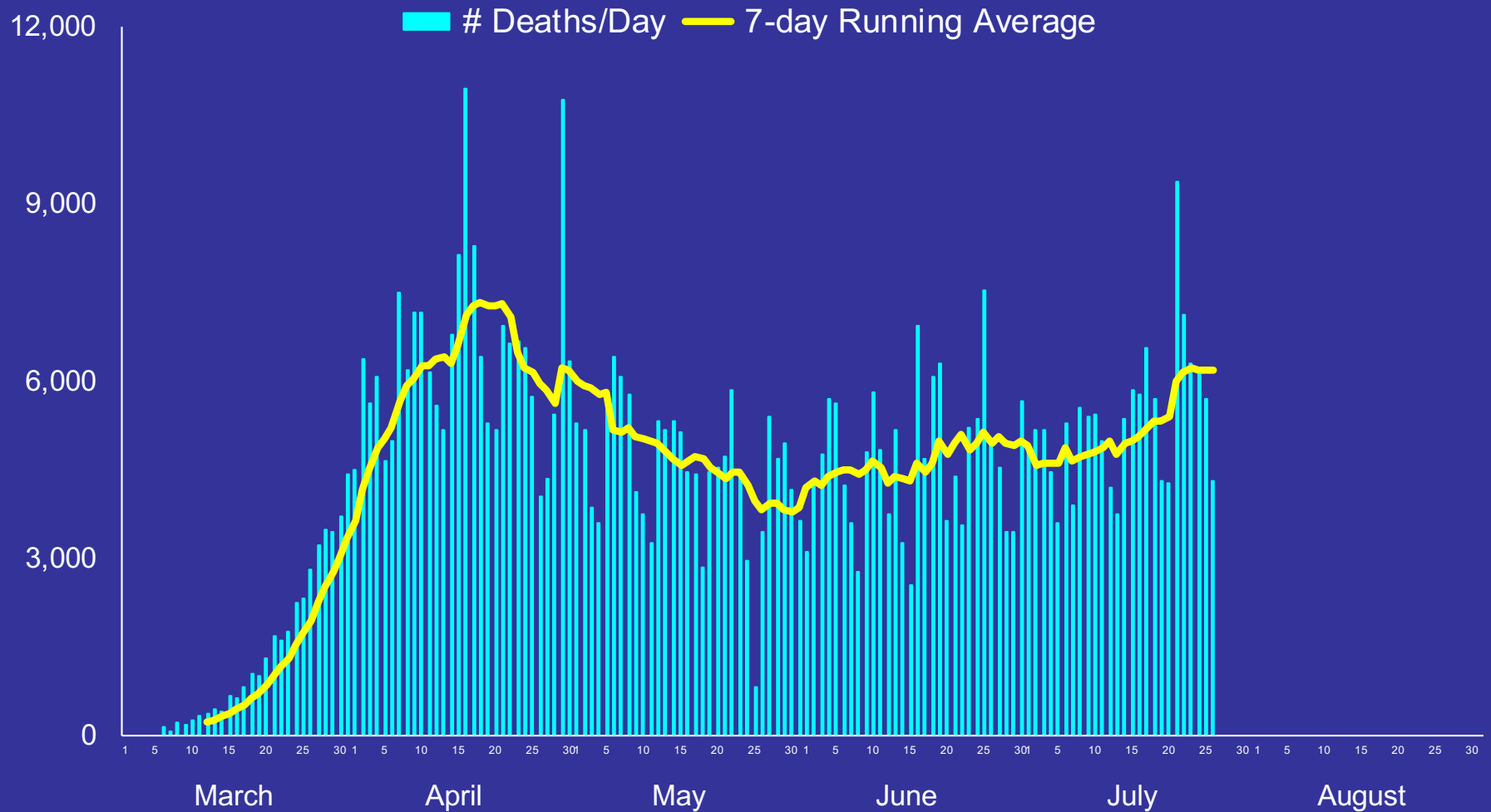
Cumulative Number of Deaths from COVID-19



Numbers given for the first of February, March, April, May, June, and July.

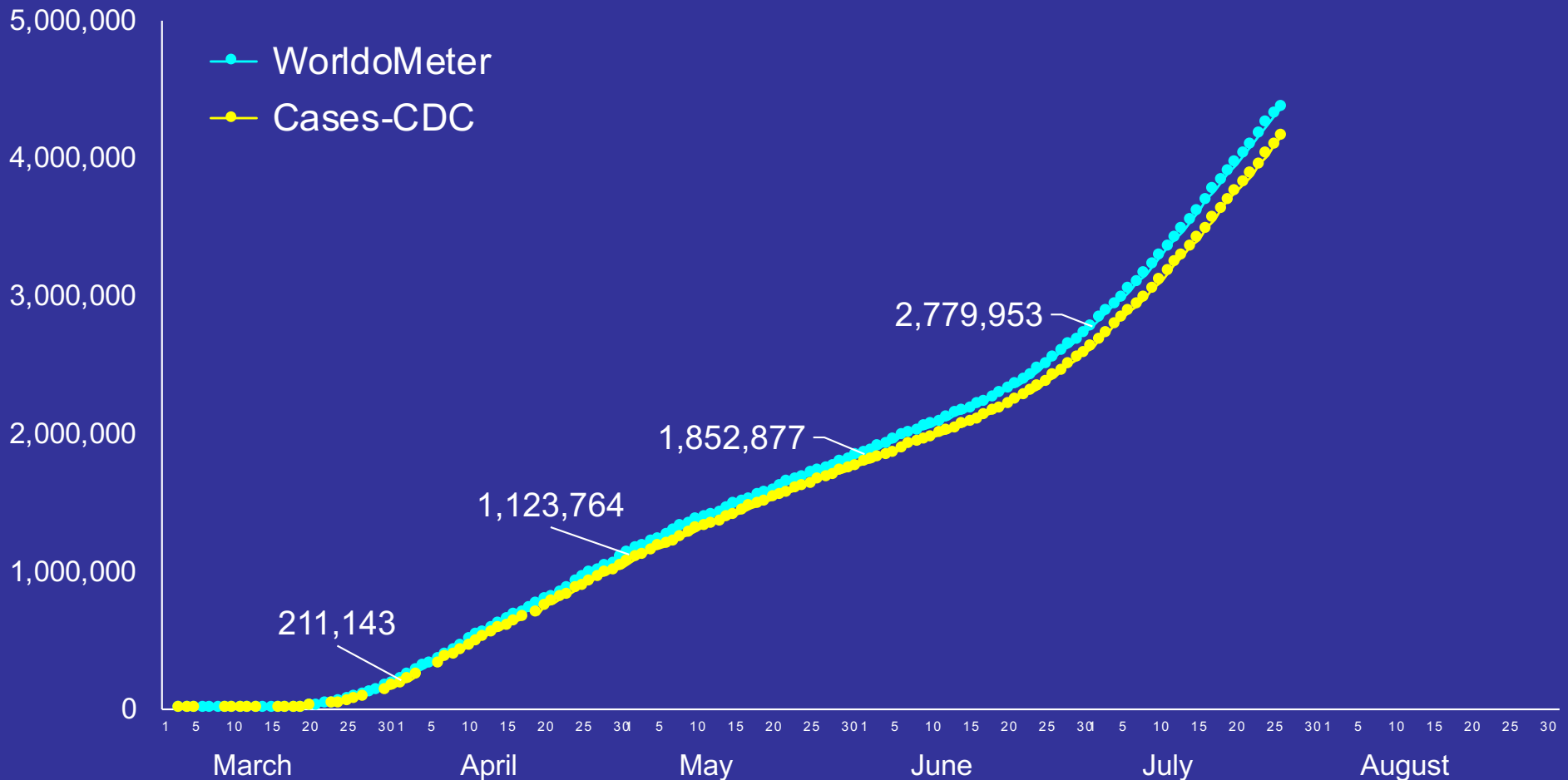
# World COVID-19 Situation

## Number of Deaths from COVID by Day



# U.S. COVID-19 Situation

## Cumulative Number of Confirmed Cases



March 5 – removed some of the restrictions on who could be tested.

May 1 – many states began loosening social distancing restrictions.

In mid-April CDC started reporting probable + confirmed cases.

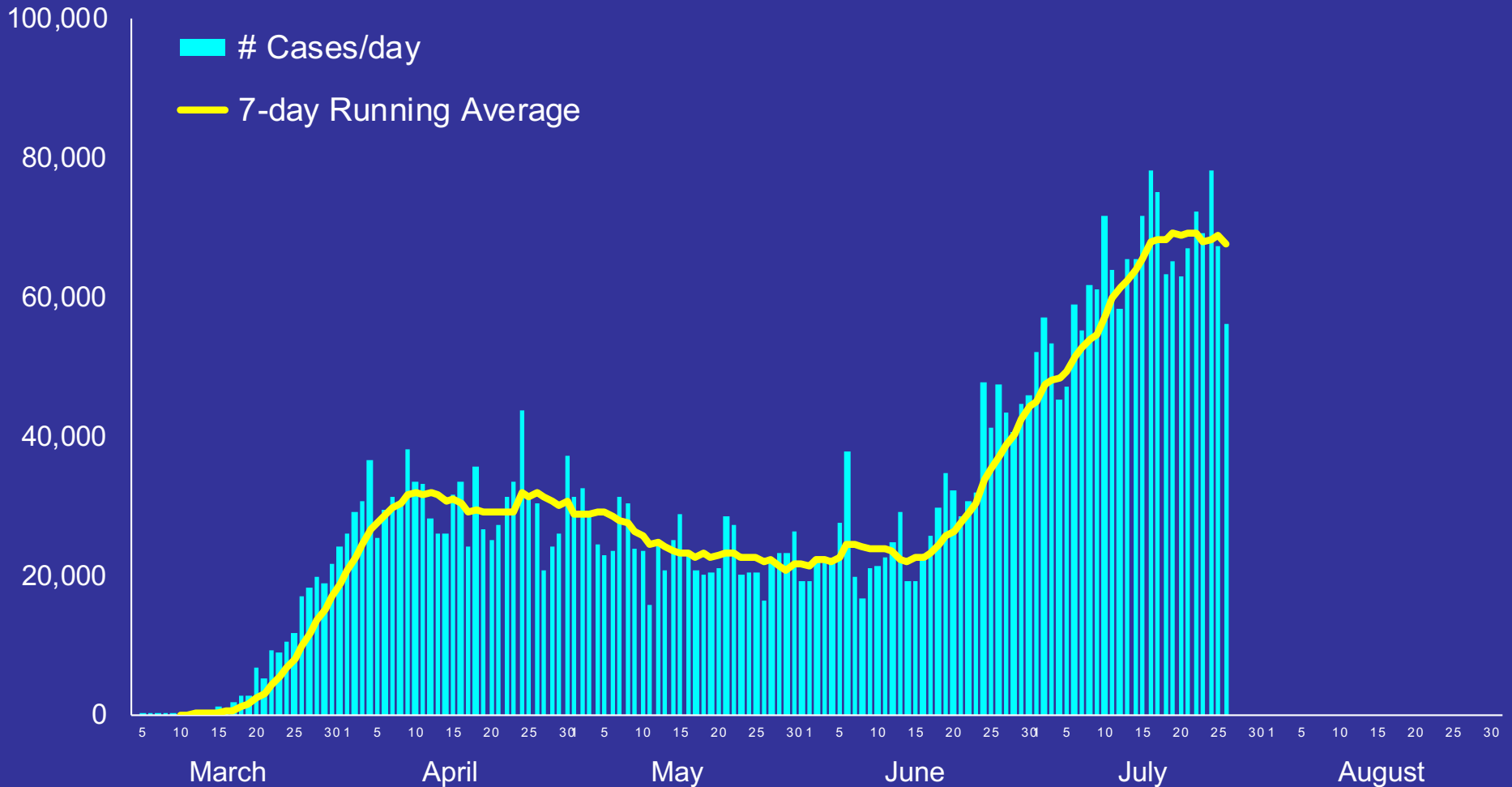
Numbers given for the first of April, May, June, and July.

<https://www.worldometers.info/coronavirus/#countries>

<https://www.cdc.gov/coronavirus/2019-ncov/cases-in-us.html>

# U.S. COVID-19 Situation

## Number of Newly Diagnosed Cases by Day

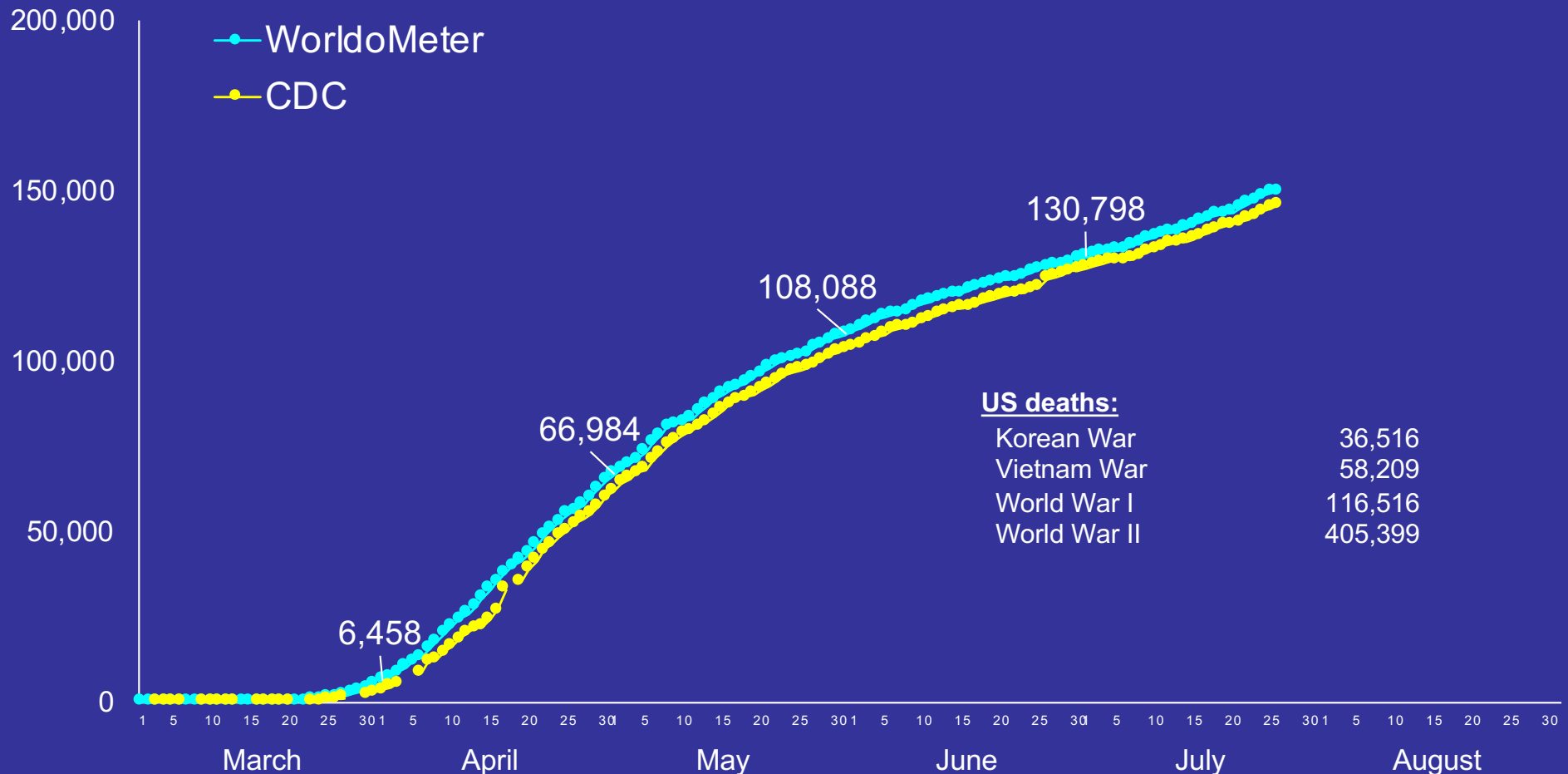


March 5 – removed some of the restrictions on who could be tested.  
May 1 – many states began loosening social distancing restrictions.

<https://www.worldometers.info/coronavirus/#countries>

# U.S. COVID-19 Situation

## Cumulative Number of Deaths from COVID-19



### US deaths:

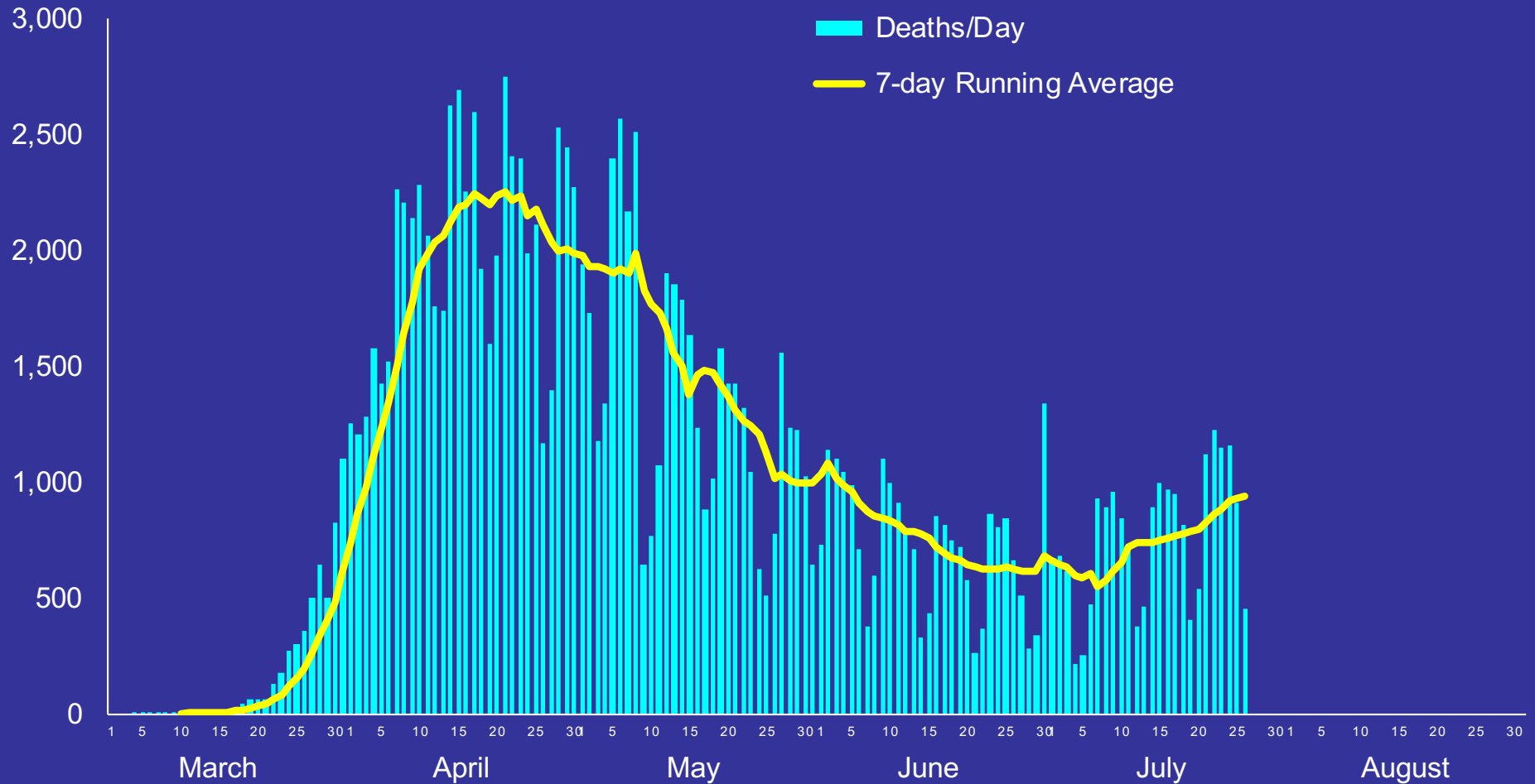
Korean War	36,516
Vietnam War	58,209
World War I	116,516
World War II	405,399

In mid-April CDC started reporting probable + confirmed case.  
 May 1 – many states loosened social distancing restrictions.  
 As of May 1 began posting numbers at end of day rather than 4pm CT  
 Numbers given for the first of April, May, June, and July.

<https://www.worldometers.info/coronavirus/#countries>  
<https://www.cdc.gov/coronavirus/2019-ncov/cases-in-us.html>

# U.S. COVID-19 Situation

## Number of Deaths from COVID-19 by Day



In mid-April probable cases were added to New York City's death total; updated data 6/26/20 that had moved deaths to correct date. Numbers are from last post of the day.

<https://www.worldometers.info/coronavirus/#countries>

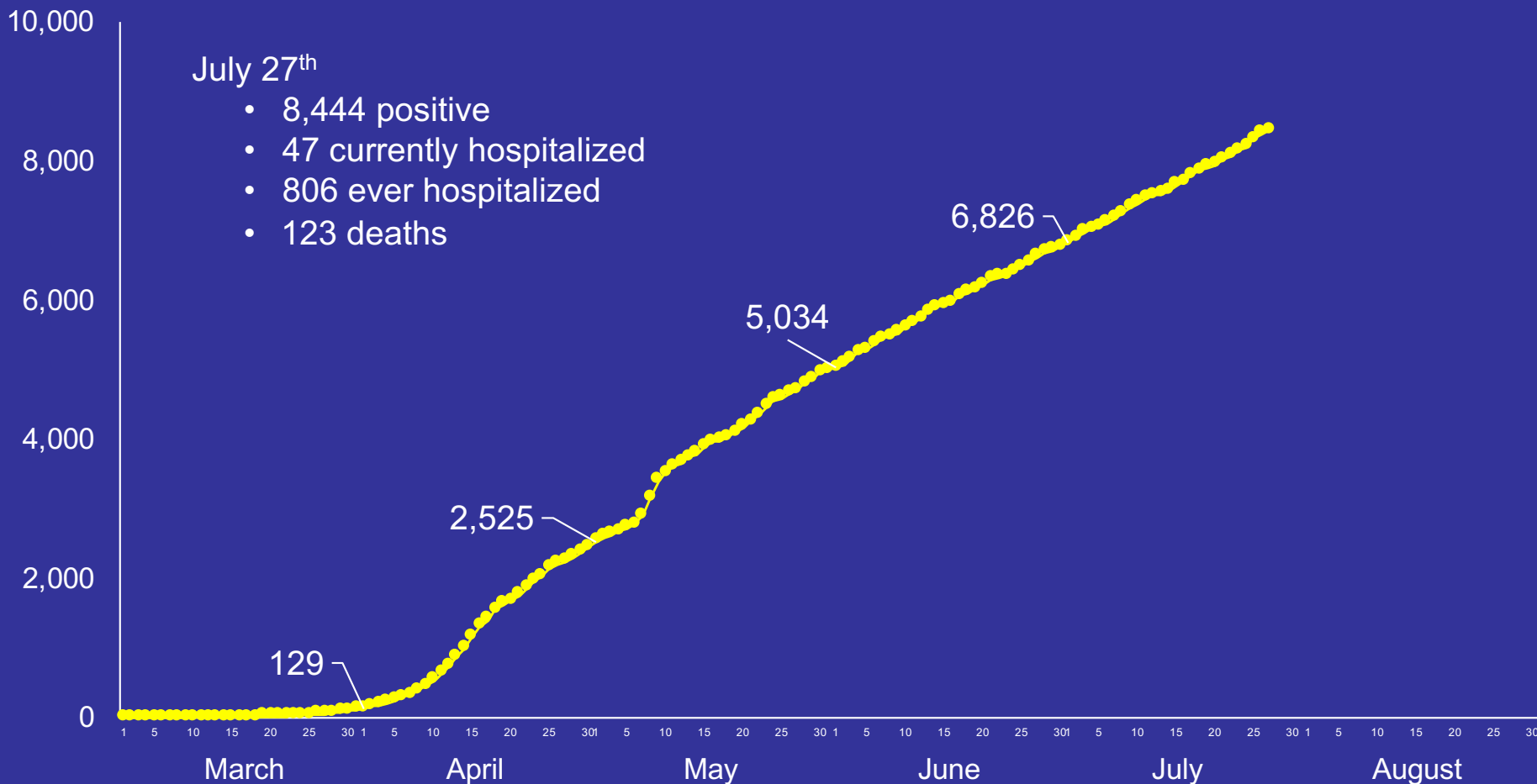


# **COVID-19 Situation**

## **South Dakota & Brookings County**

# South Dakota COVID-19 Situation

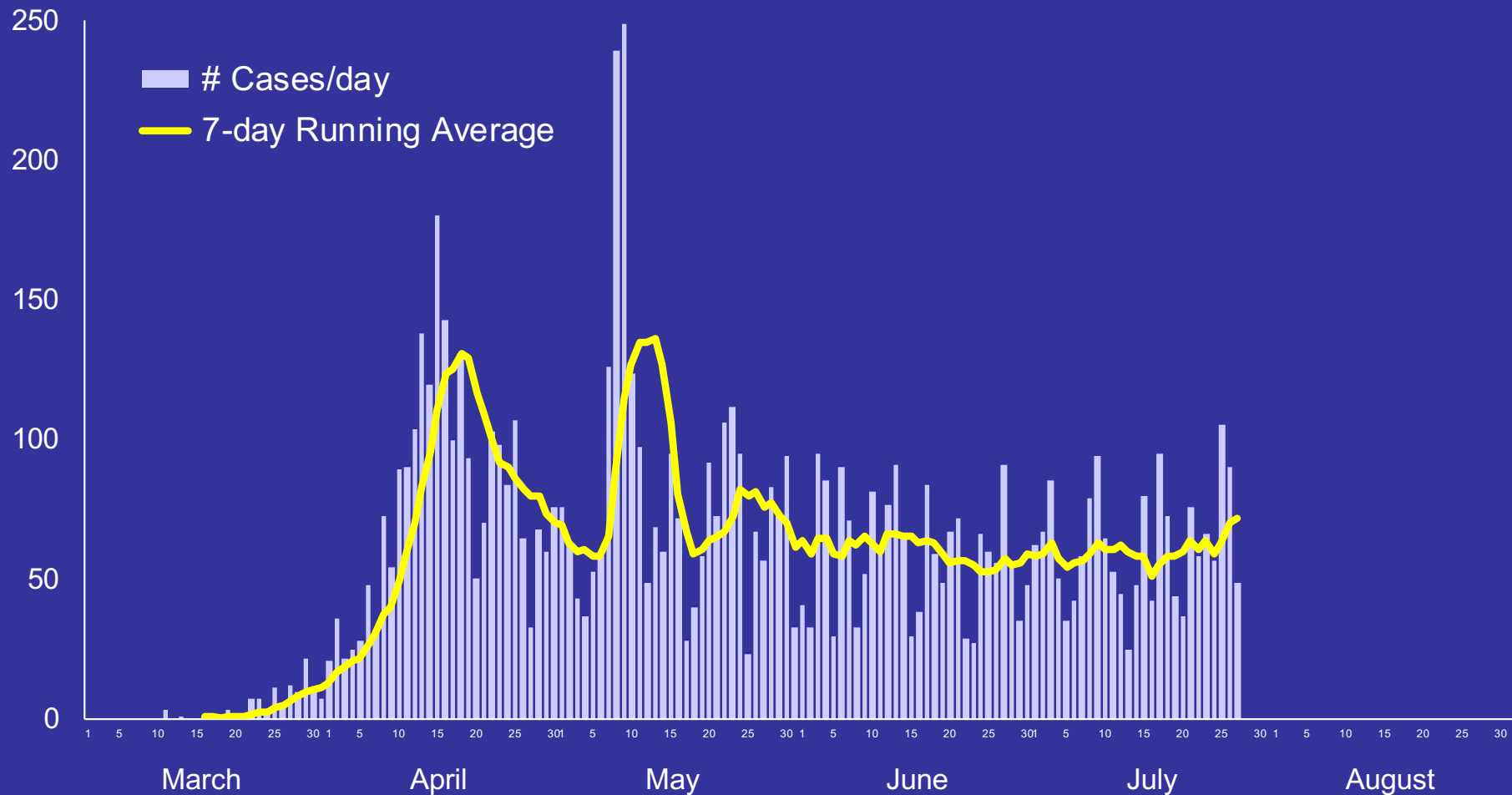
## Cumulative Number of Confirmed Cases



Numbers given for the first of April, May, June, and July.  
Week of May 4 – screening on Smithfield workers, families & contacts.  
State residents only.

# South Dakota COVID-19 Situation

## Number of Confirmed Cases by Day



Mid-April: Smithfield outbreak.

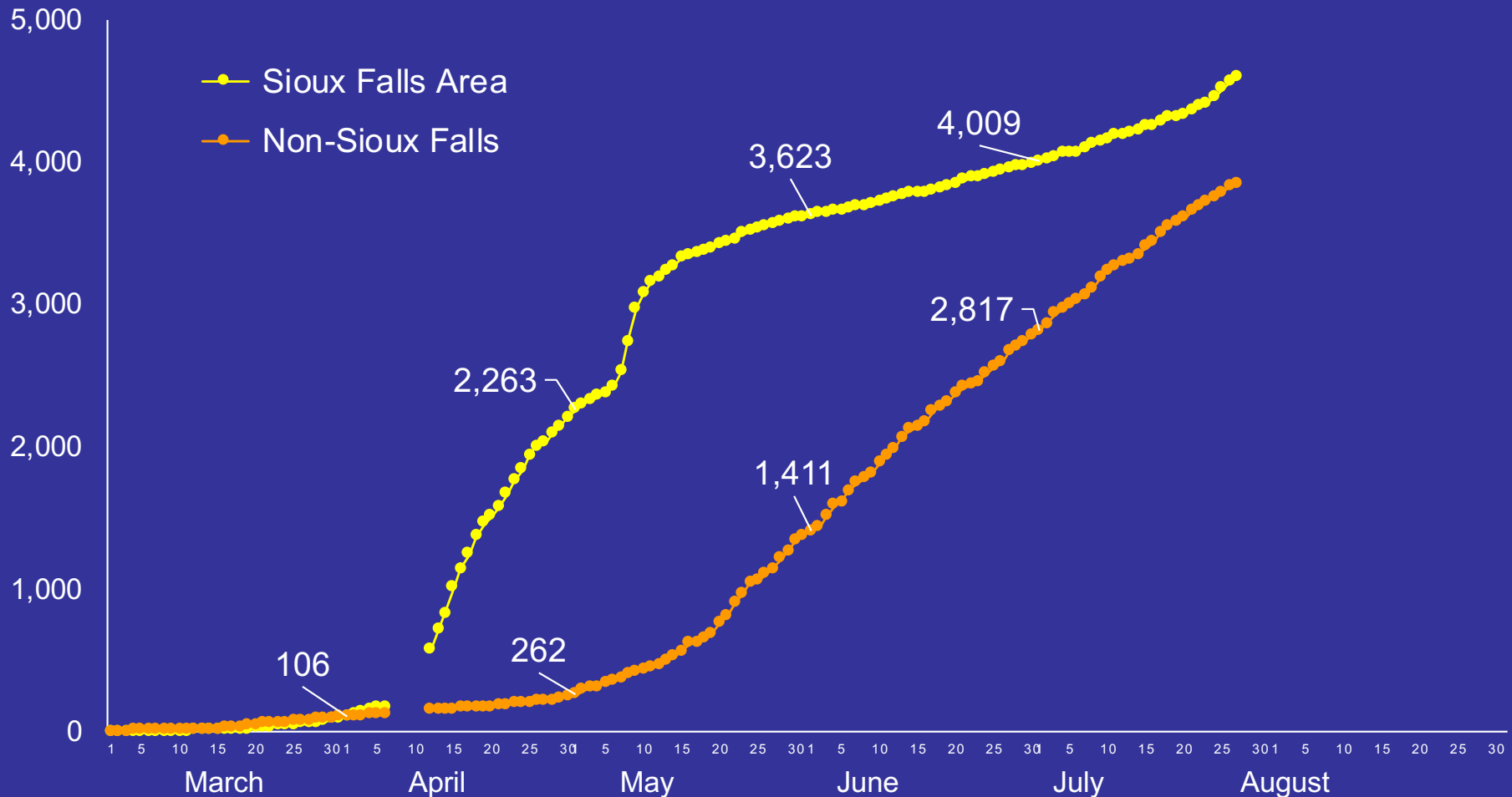
Week of May 4: screened Smithfield workers, families & contacts.

May 28: began screenings residential care residents & health care providers

# South Dakota COVID-19 Situation

## Sioux Falls Area vs. Non-Sioux Falls Area

Cumulative Number of Confirmed Cases

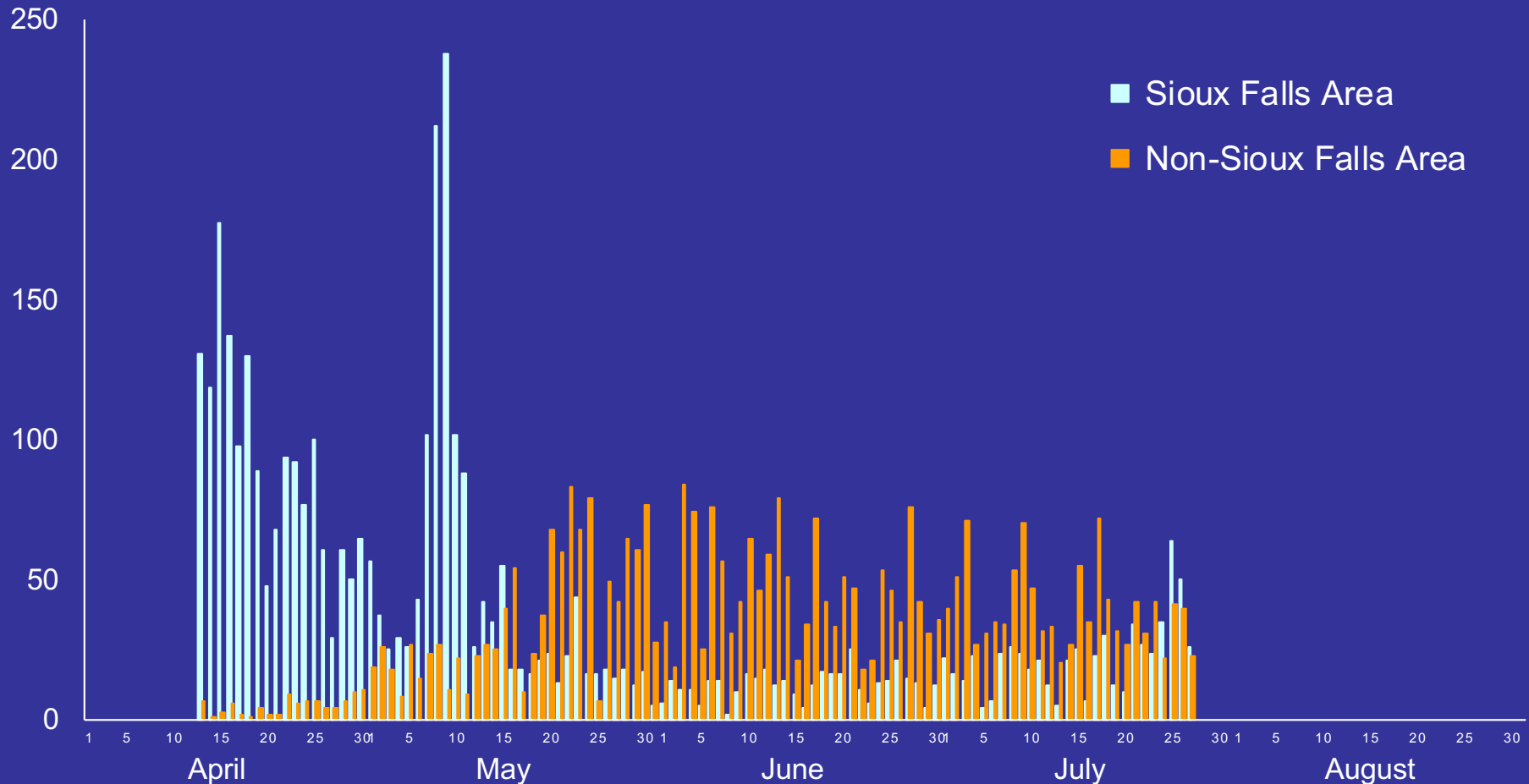


Sioux Falls area includes Minnehaha, Lincoln, McCook & Turner counties. No data presented for 4/7/20-4/11/20.  
 Week of May 4 – screening on Smithfield workers, families & contacts.  
 Numbers given for the first of April, May, June, and July.

# South Dakota COVID-19 Situation

## Sioux Falls vs. Non-Sioux Falls

Number of Confirmed Cases by Location & Day



Mid-April: Smithfield outbreak.

Week of May 4 – screening of Smithfield workers, families & contacts.

Did not start recording Sioux Falls vs. Non-Sioux Falls until mid-April.

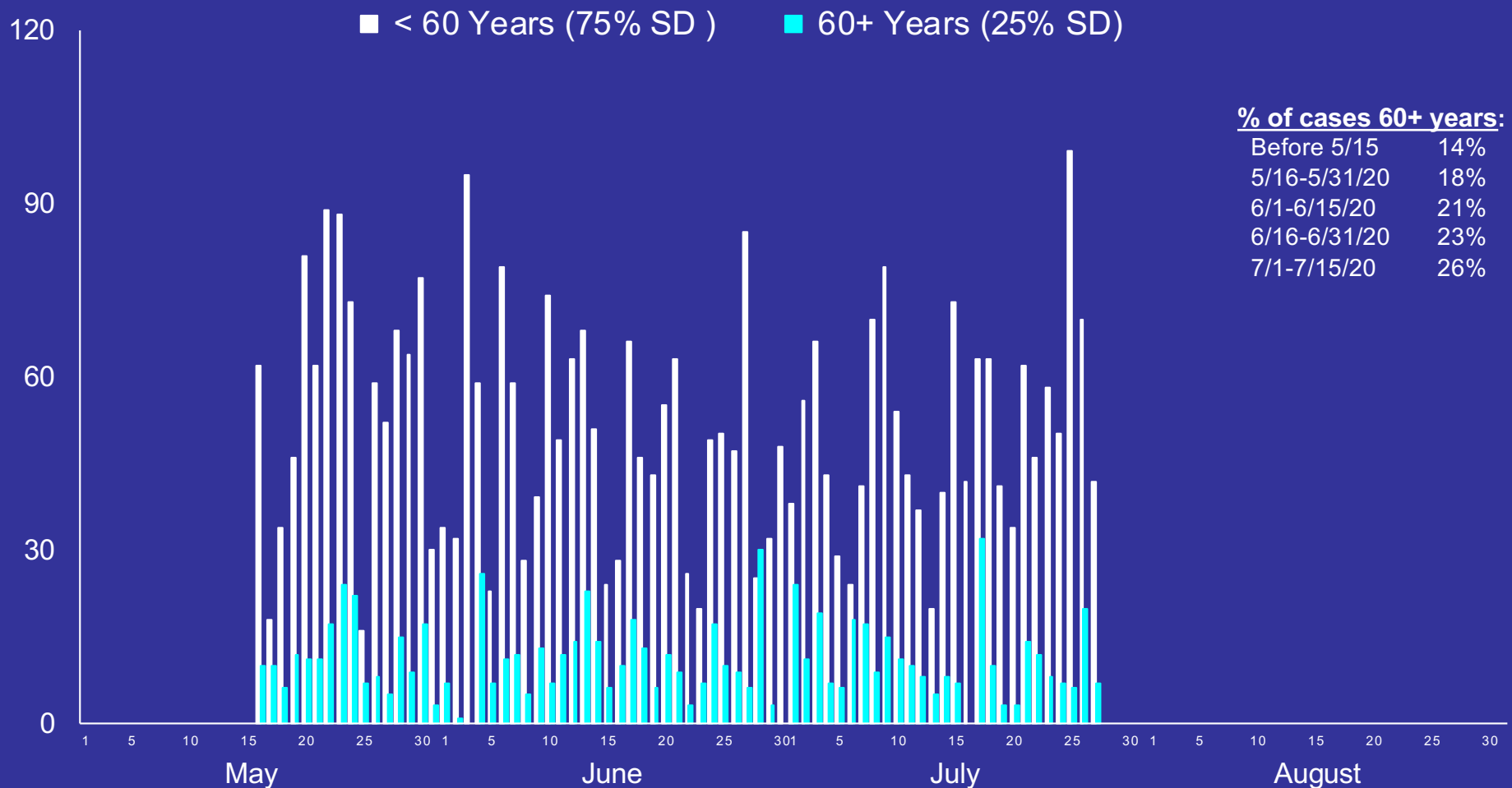
Sioux Falls area includes Minnehaha, Lincoln, McCook & Turner counties.

<https://doh.sd.gov/news/Coronavirus.aspx>

# South Dakota COVID-19 Situation

## Age Distribution

Number of Confirmed Cases by Age & Day



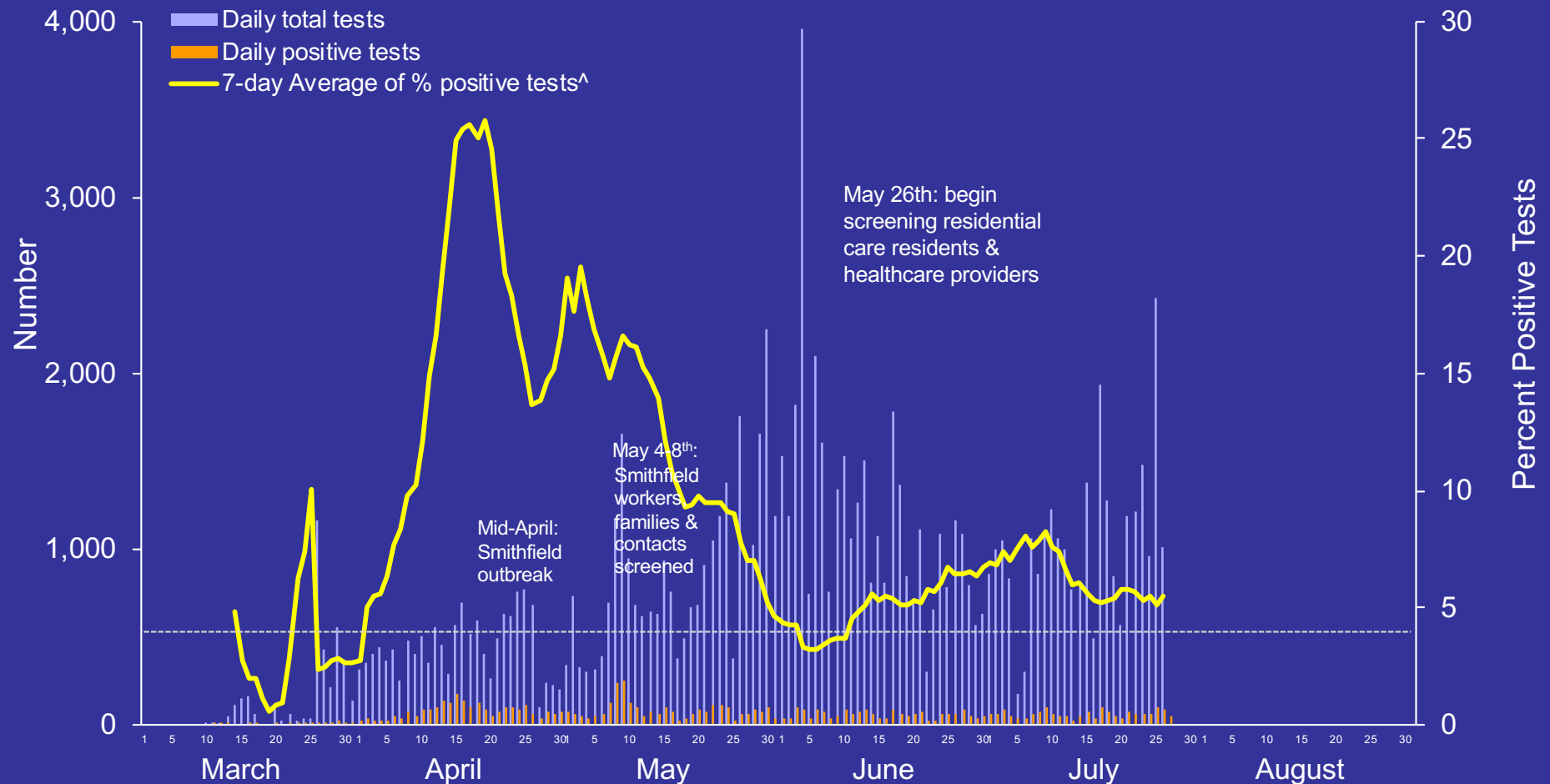
Started recording age distribution on May 15<sup>th</sup>.

On May 15<sup>th</sup> there were 3,336 individuals < 60 years and 551 60+ years (86% and 14% of cases, respectively).

Testing at nursing homes and residential care facilities began the week of May 26<sup>th</sup>.

# South Dakota COVID-19 Situation

## Percentage of Positive Tests



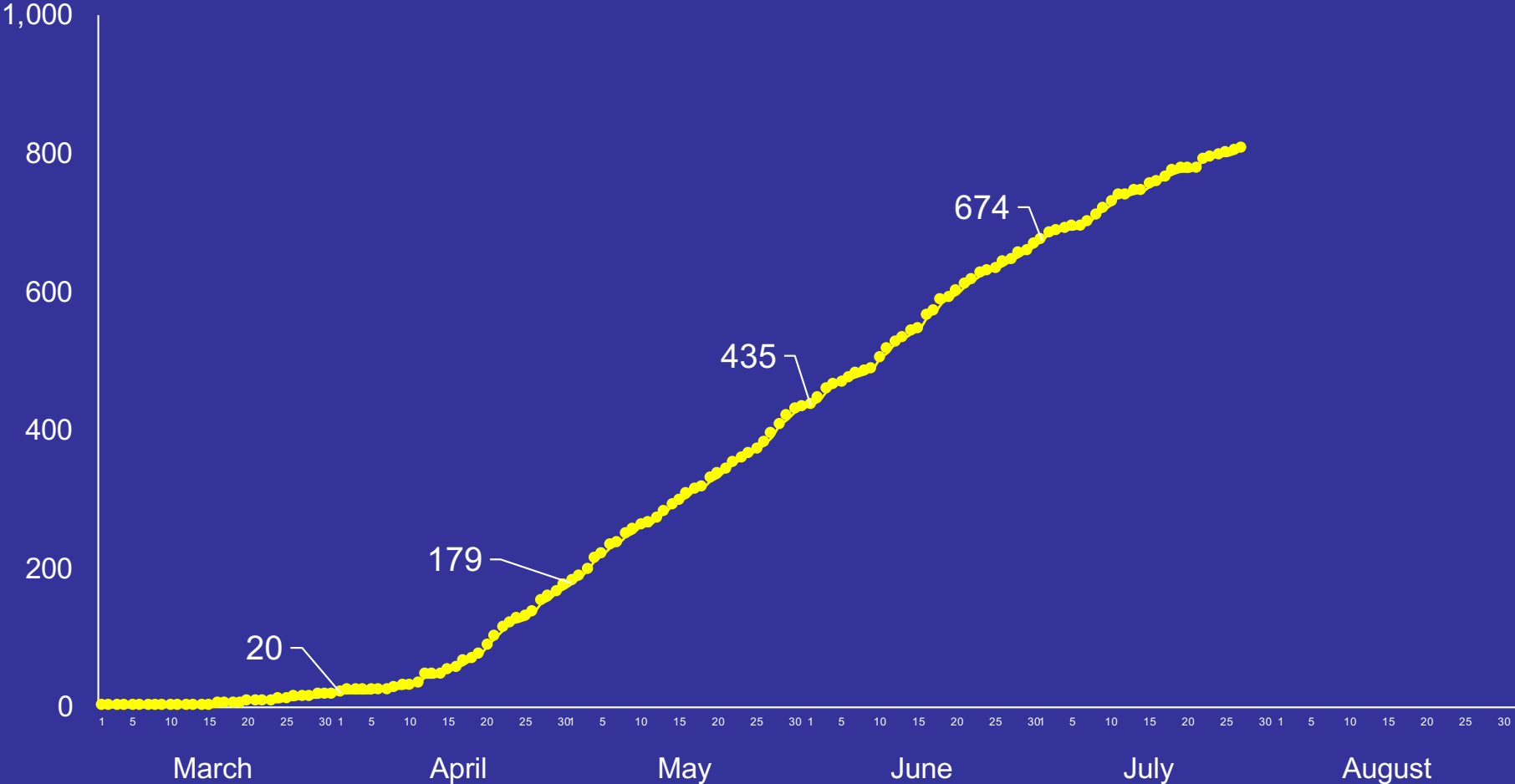
^ Calculated as sum of 7-days of previous positive cases/sum of 7-days of total tests completed\*100. Duplicate tests on same individual are not included. DOH website included duplicates on 7/26 so daily total number & number of negative tests were not able to be determined on 7/27.

The rate of positivity provides insight into whether enough testing is being conducted. If positivity is high, it suggests that the sickest are being tested and milder or asymptomatic cases may be missed. The WHO has said that in countries that have conducted extensive testing for COVID-19, percent positive should remain at 5% or lower for at least 14 days.

**NOTE:** interpretation of these data is complicated by who is getting tested at any particular time.

# South Dakota COVID-19 Situation

## Cumulative Number of Hospitalizations

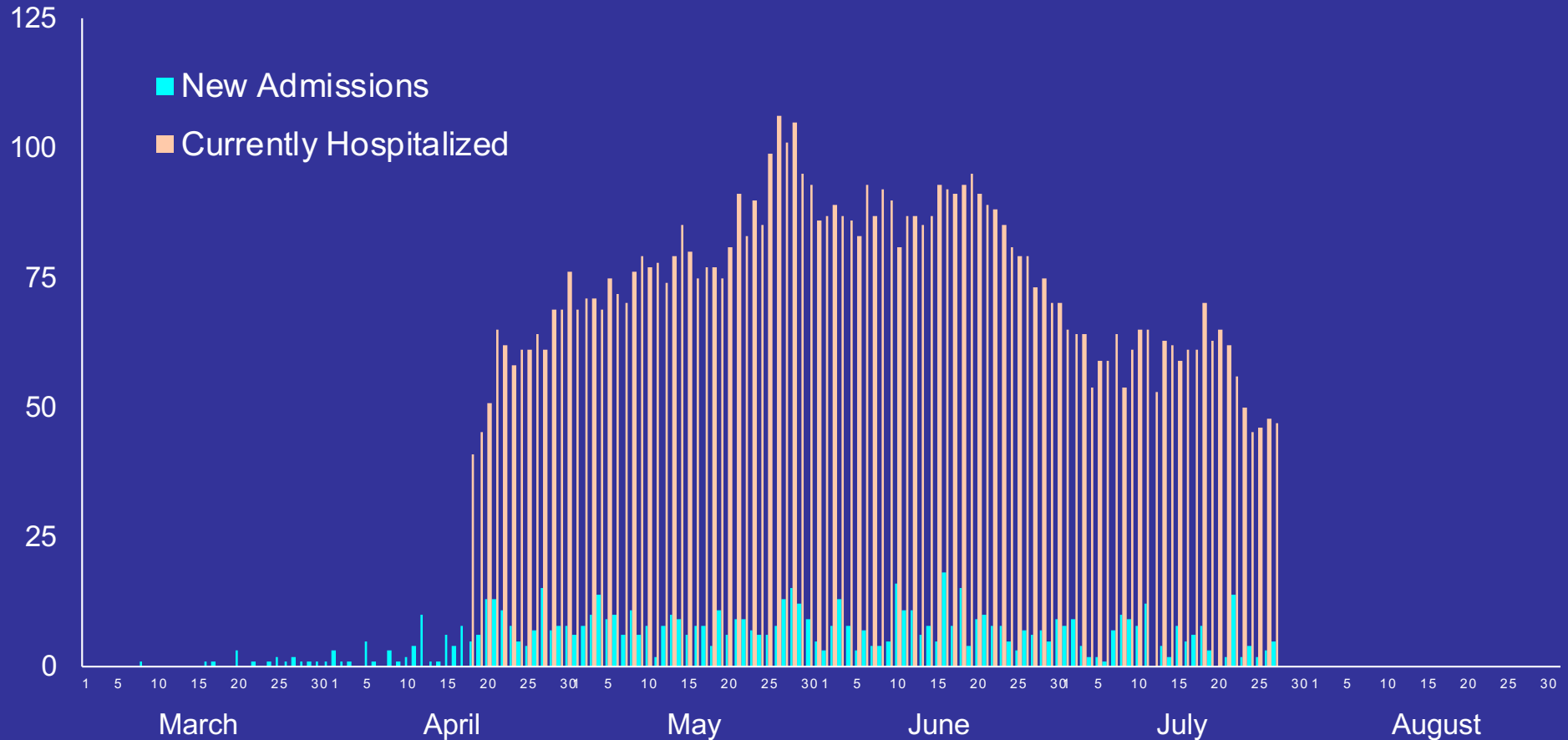


Numbers given for the first of April, May, June, and July.  
Includes only state residents.



# South Dakota COVID-19 Situation

## Hospitalization Data by Day



No data on currently hospitalized until April 18<sup>th</sup>.

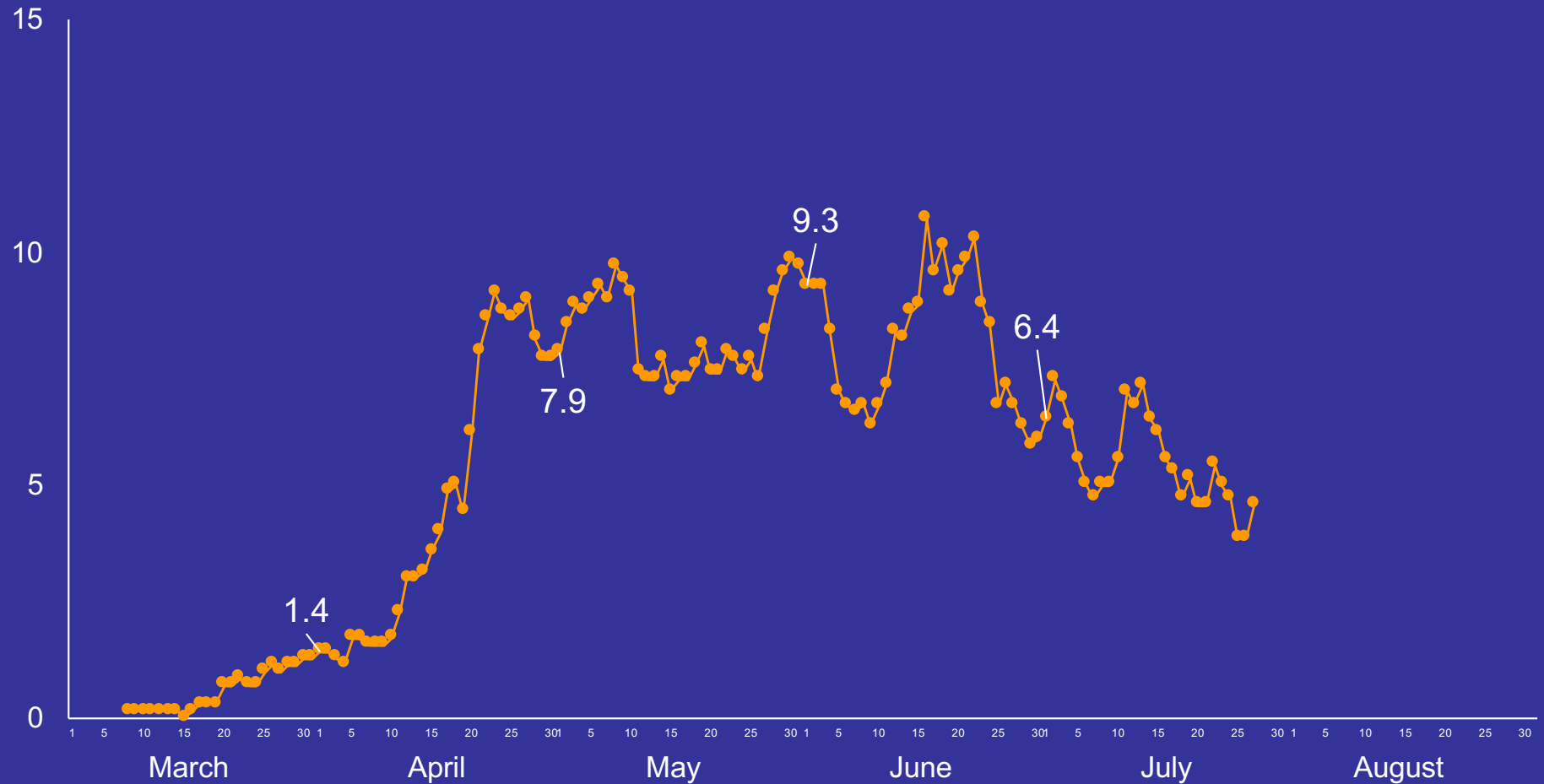
Currently hospitalized includes state and out-of-state residents and transfers from other states.

New admissions includes only state residents.

Does not include patients on home health care.

# South Dakota COVID-19 Situation

## Running 7-day Average of New Hospitalizations by Day

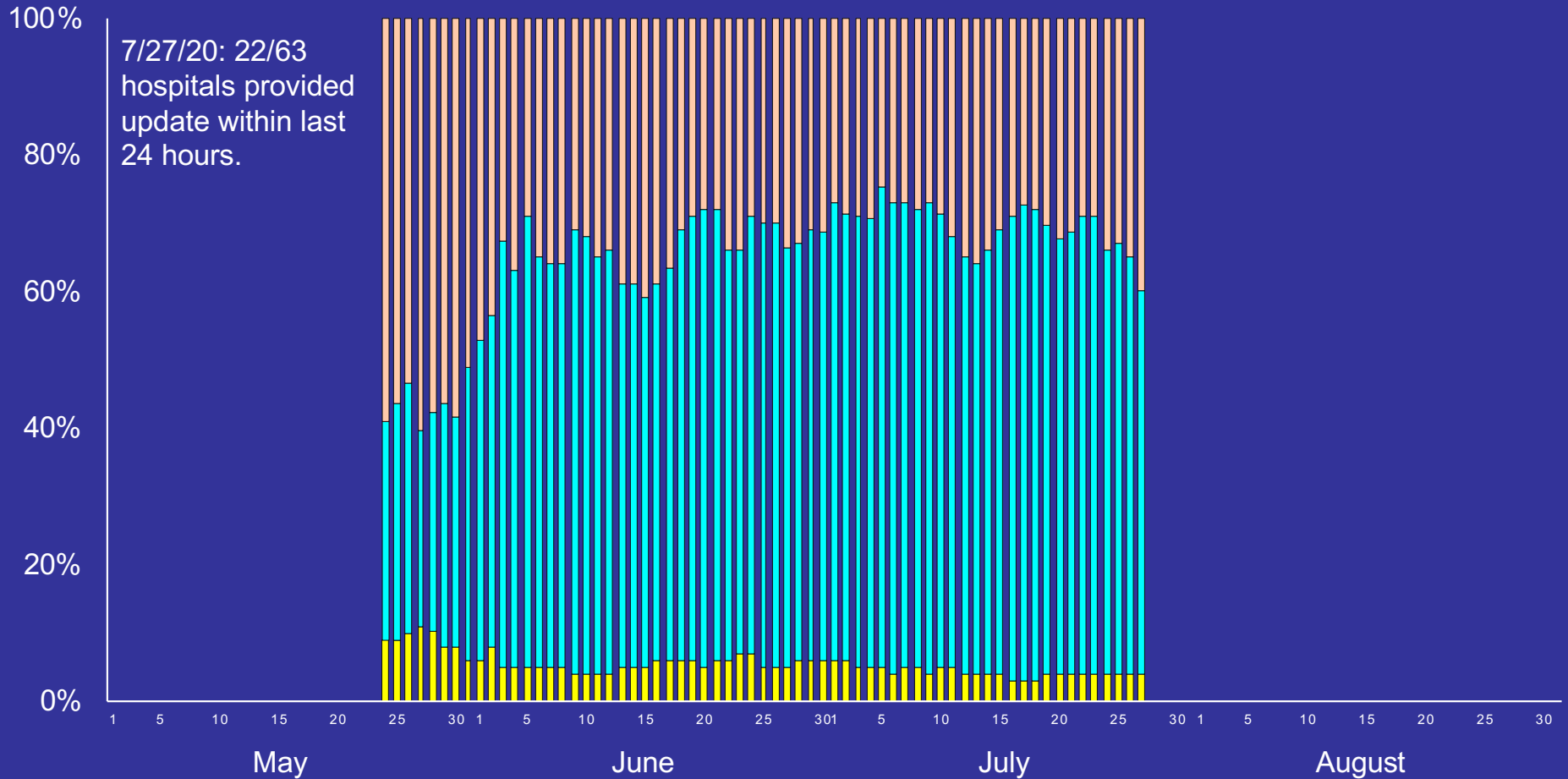


Numbers given for the first of April, May, June, and July.  
Includes only state residents.

# South Dakota COVID-19 Situation

## ICU Bed Availability

■ Available
 ■ Non-COVID Occupied
 ■ COVID-19 Occupied



Started recording ICU bed availability on May 24<sup>th</sup>.

These numbers include both state and out-of-state residents and transfers from other states.

≅ 250 ICU beds

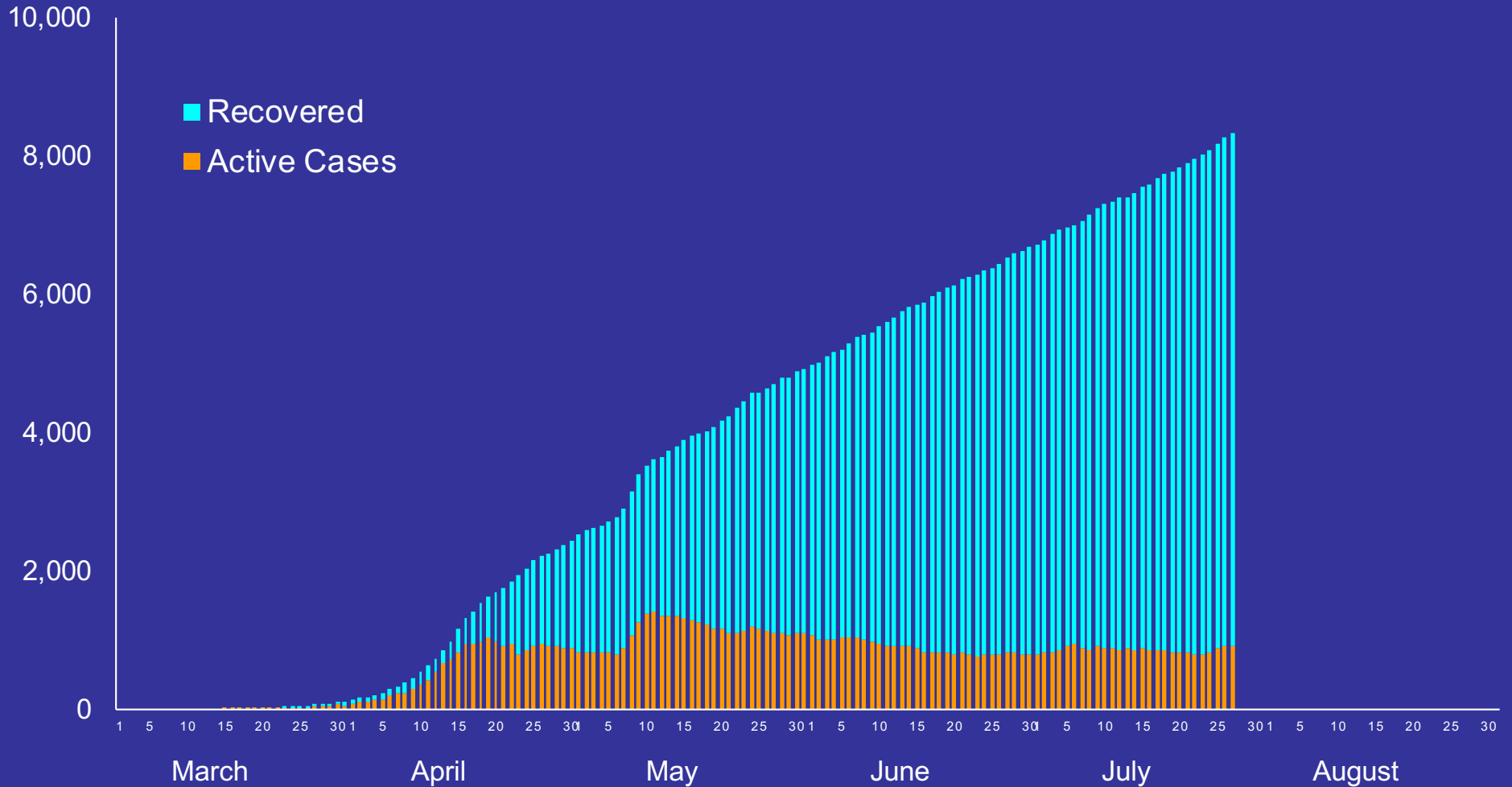
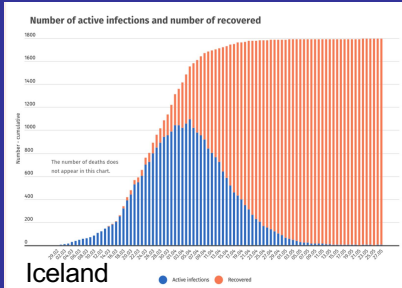
≅ 650 "Realistic Need"

1,300 Surge Planning

<https://doh.sd.gov/news/Coronavirus.aspx>  
 Keloland/DOH News Conference (4/17)

# South Dakota COVID-19 Situation

## Number of Active and Recovered Cases

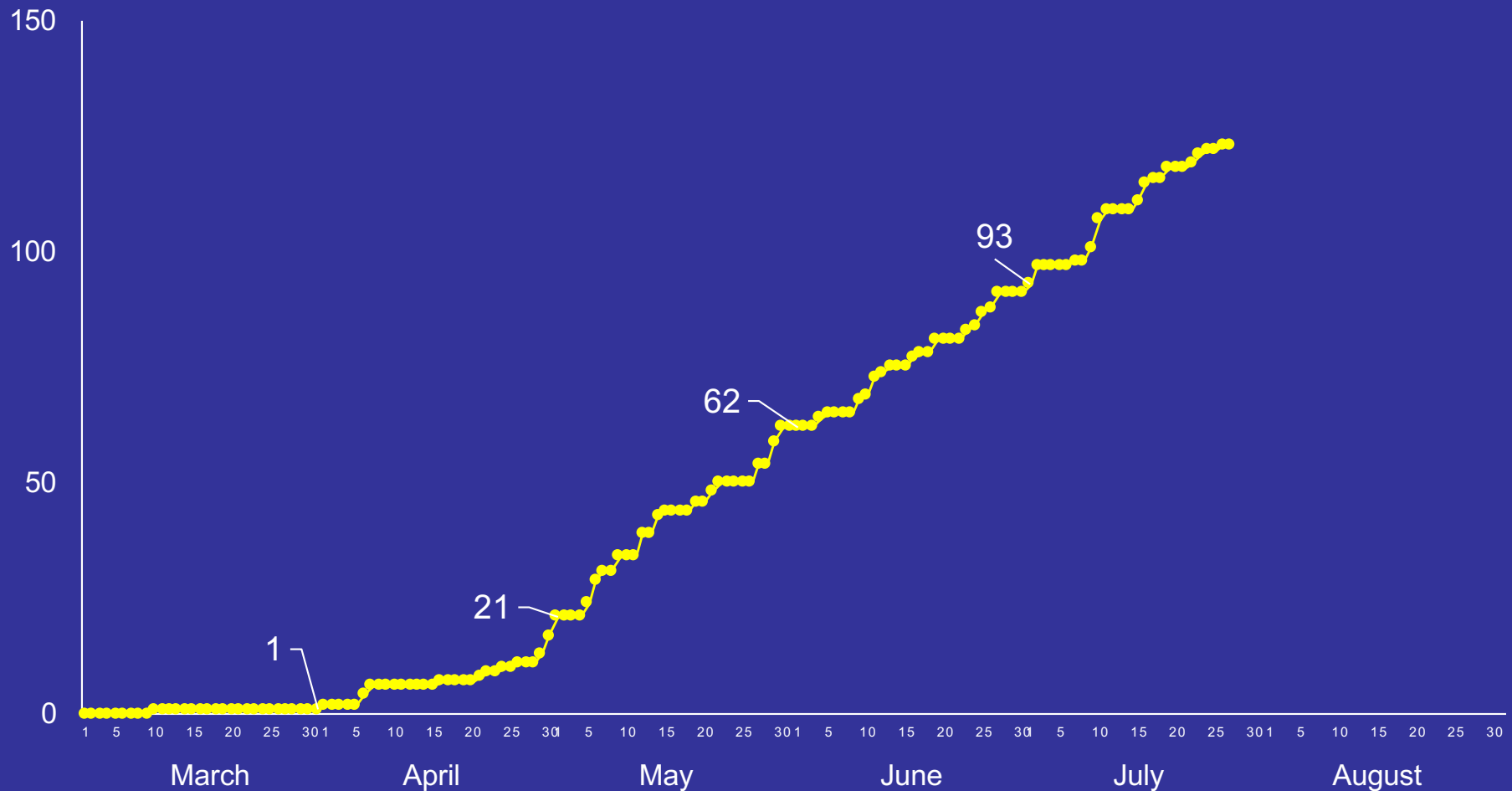


Does not include number of deaths.

<https://doh.sd.gov/news/Coronavirus.aspx>

# South Dakota COVID-19 Situation

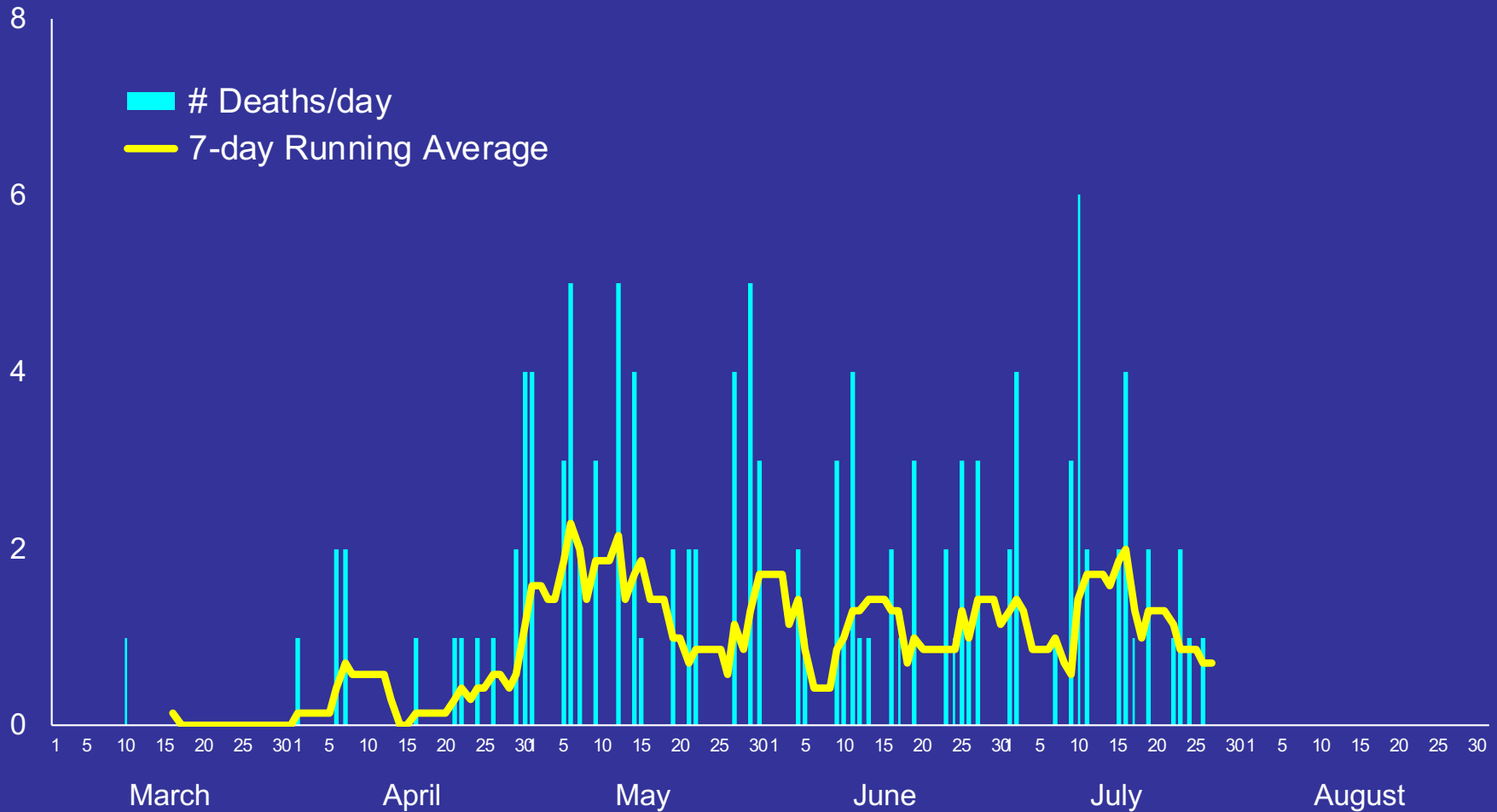
## Number of Deaths from COVID-19



Dept of Health does not report deaths until a certified death record is filed.  
By law, a death record must be filed within 5 days of the date of death.  
Numbers given for the first of April, May, June and July.

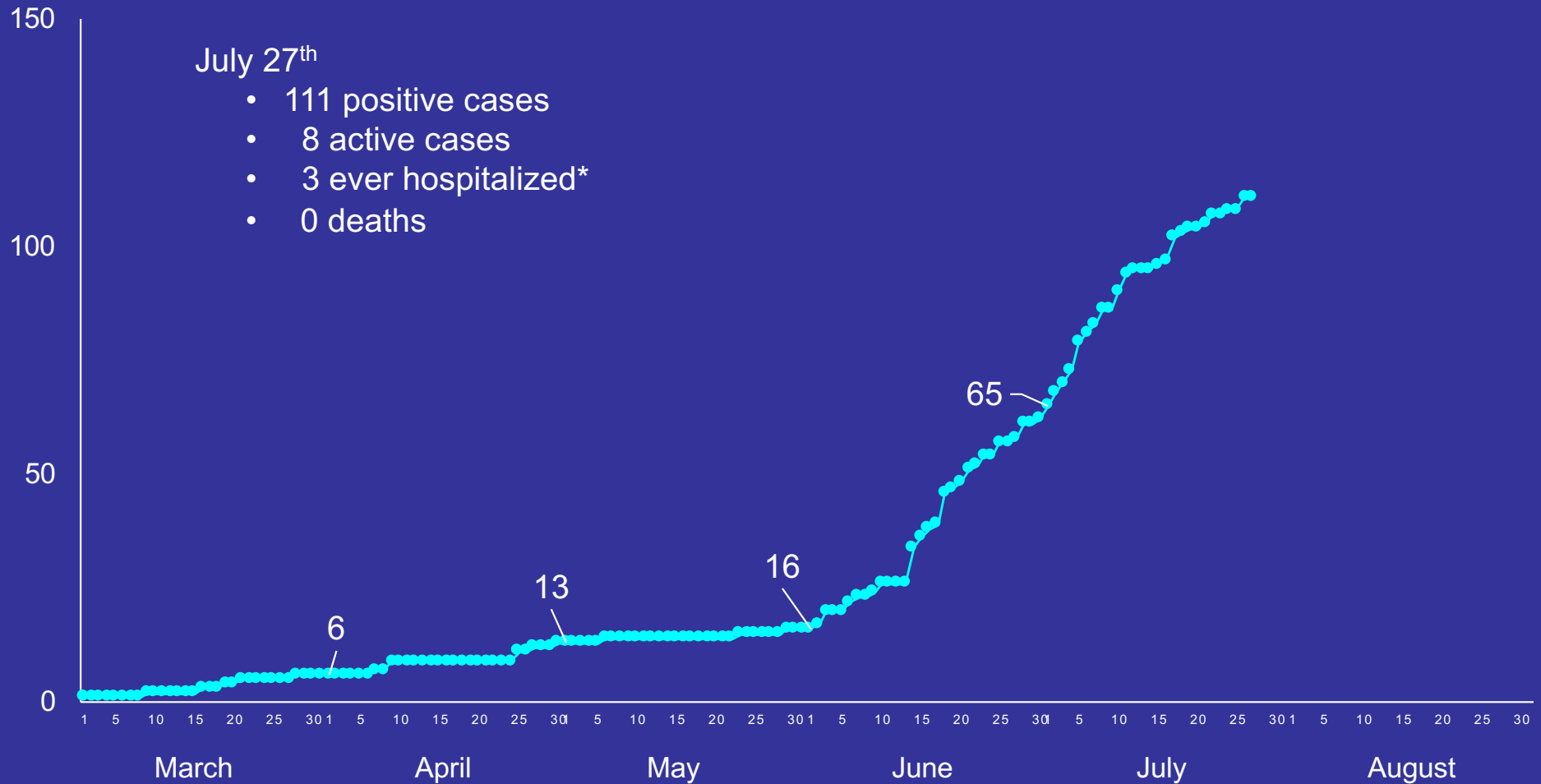
# South Dakota COVID-19 Situation

## Number of Deaths from COVID-19 by Day



# Brookings Situation

## Number of Confirmed Cases of COVID-19

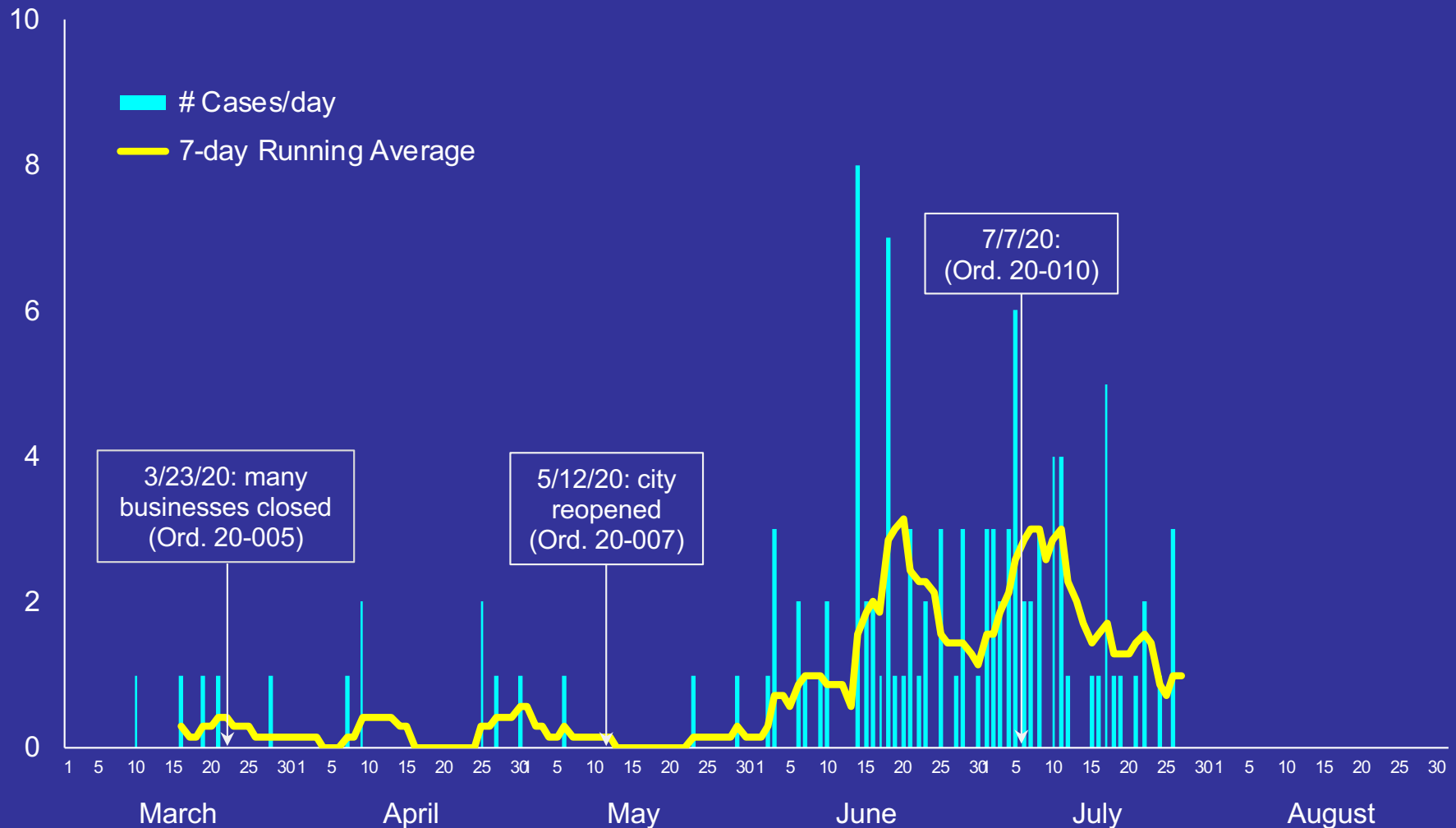


Numbers given for the first of April, May, June, and July.

\* Four hospitalizations were reported between 7/7-7/22/20.

# Brookings COVID-19 Situation

Number of Confirmed Cases of COVID-19 by Day



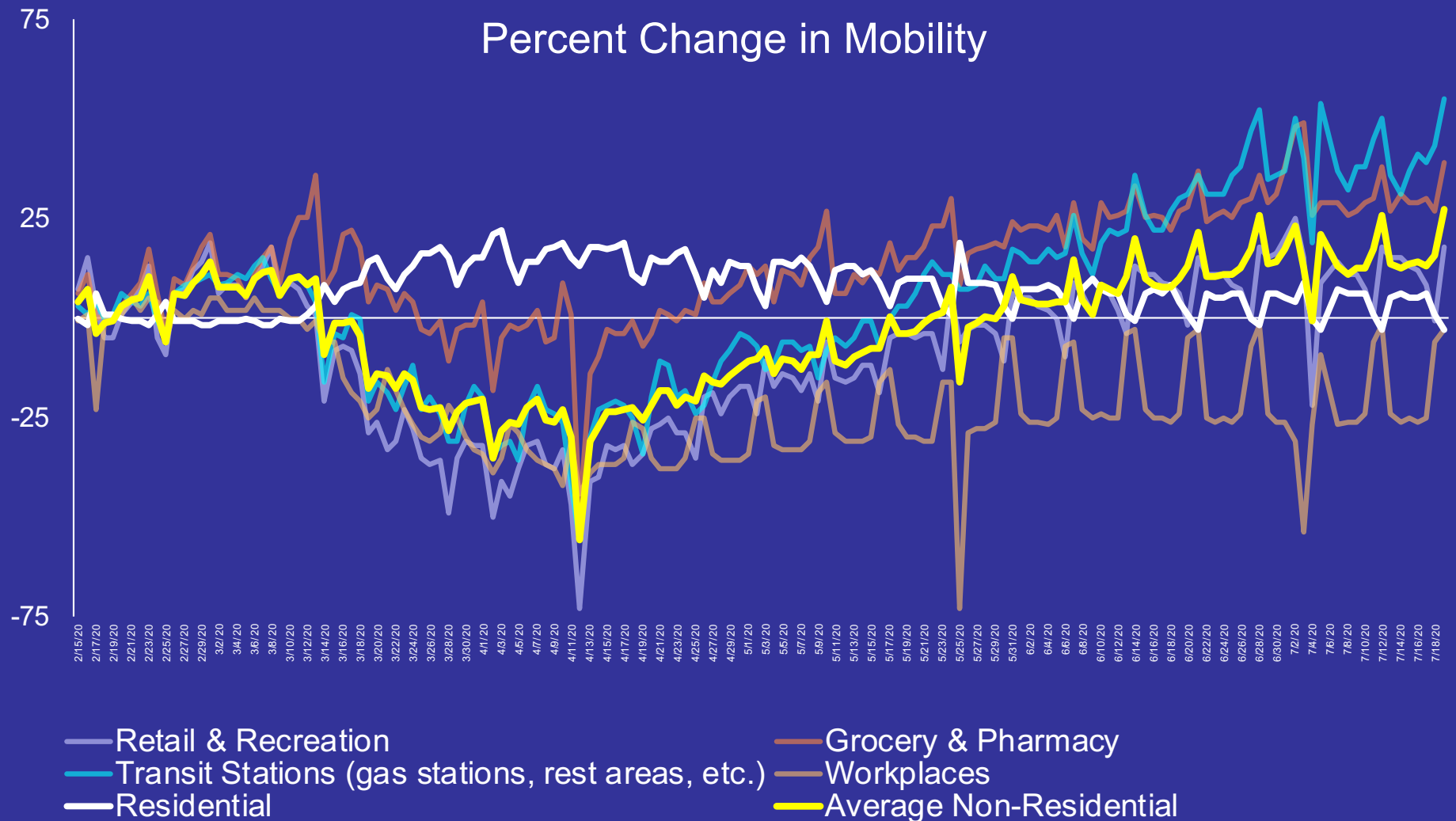
Ordinance 20-005: closure of many businesses effective 3/23/20, updated 4/9/20

Ordinance 20-007: restrictions on reopening effective 5/12/20

Ordinance 20-010: similar to 20-007 (include bar servers), 2<sup>nd</sup> reading 7/7/20



# South Dakota Mobility Data via Google

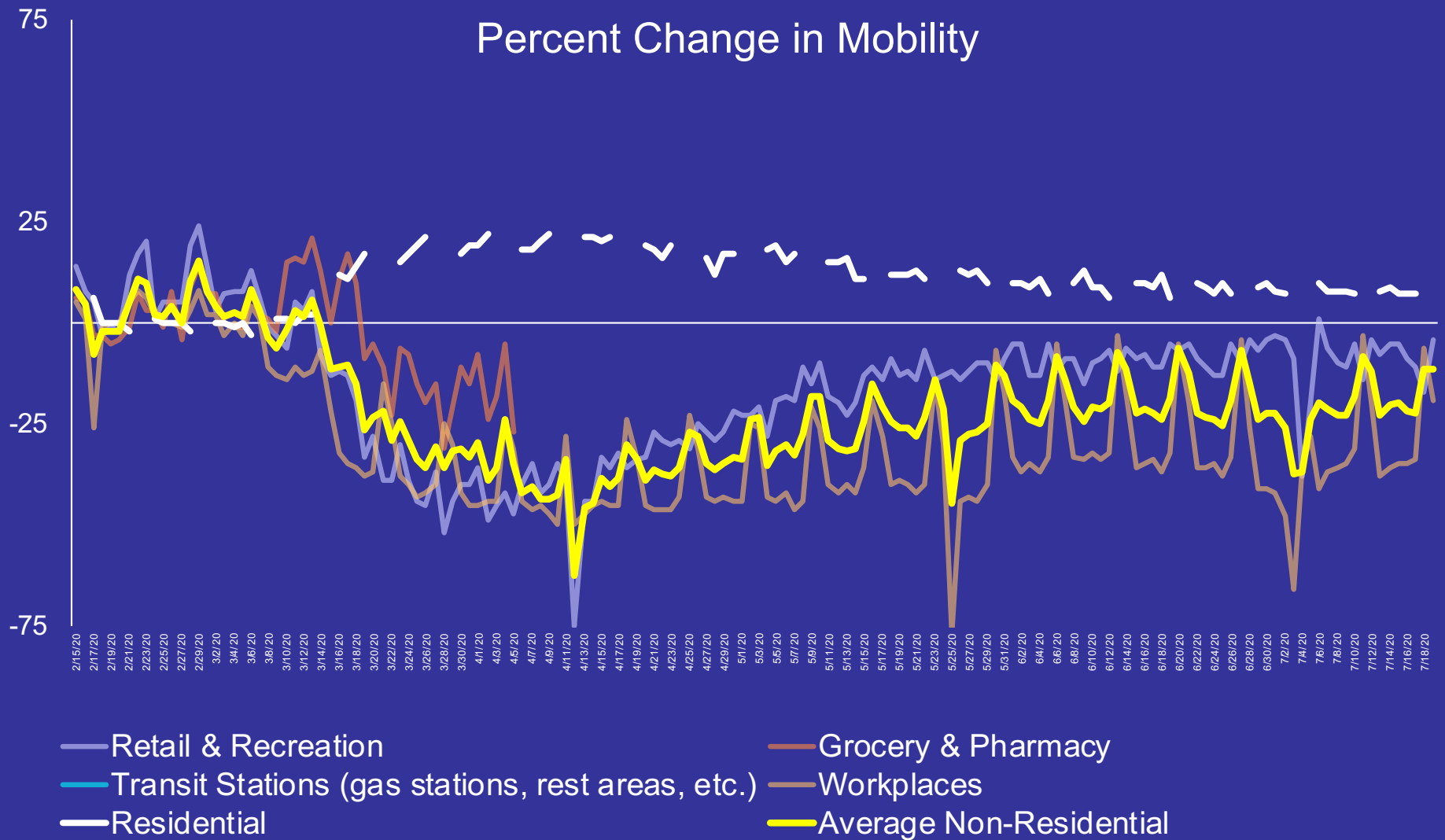


Baseline: normal value for day of week (1/3-2/6/20)

*Residential* shows a change in duration, other categories are change in total visitors. *Parks* not shown.

Data from <https://www.google.com/covid19/mobility/>

# Brookings County Mobility Data via Google



Baseline: normal value for day of week (1/3-2/6/20)

*Residential* shows a change in duration, other categories are change in total visitors. *Parks* not shown.

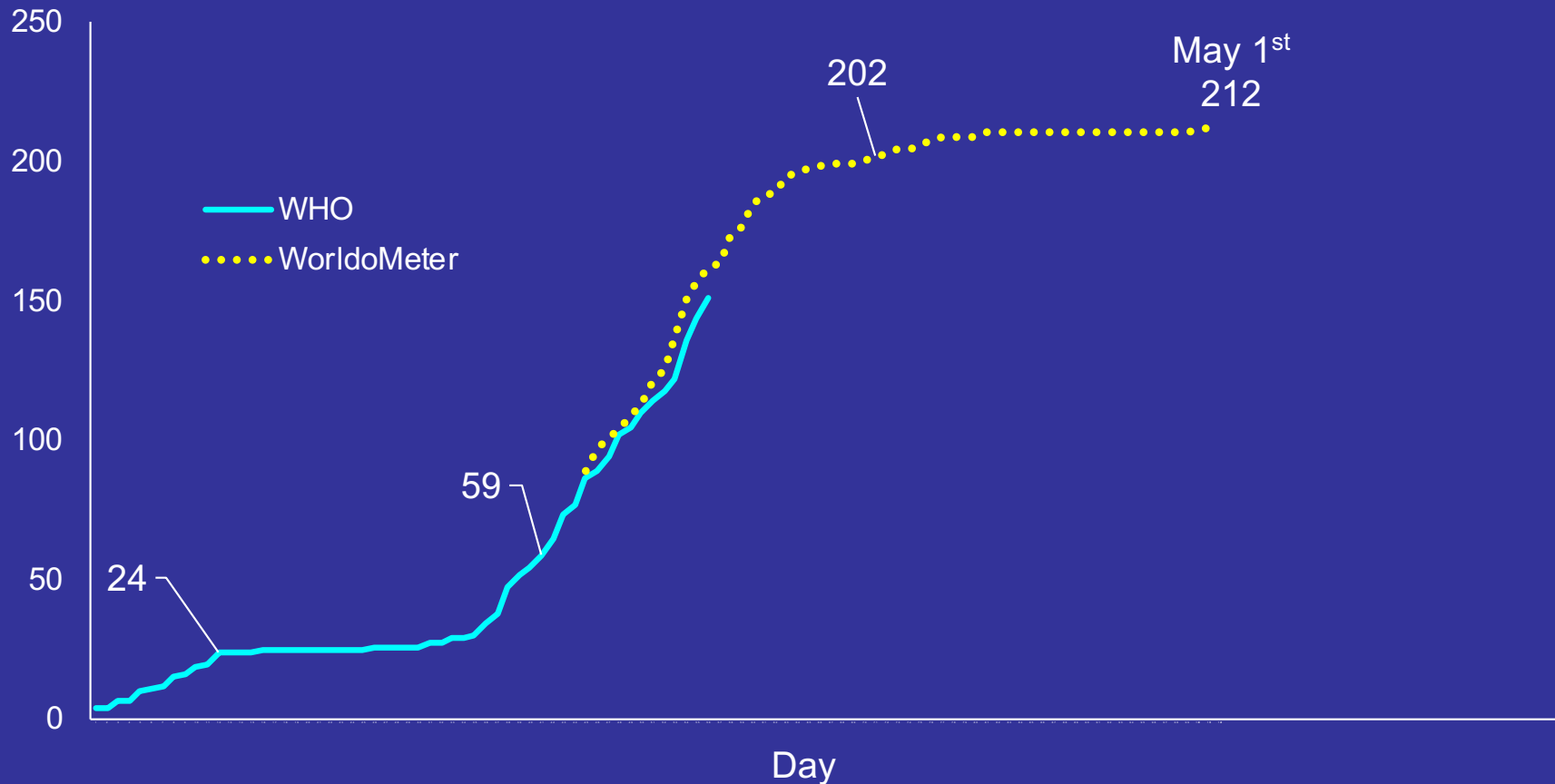
Data from <https://www.google.com/covid19/mobility/>

# Speed of Spread Through Countries & States

*(no longer updated)*

# World Health Organization COVID-19 Situation Beginning 1/20/20

## Cumulative Number of Countries Reporting Active Cases



Numbers given for the first of February, March, April, and May.

# U.S. COVID-19 Situation

Number of States Reporting Active Cases of COVID-19

