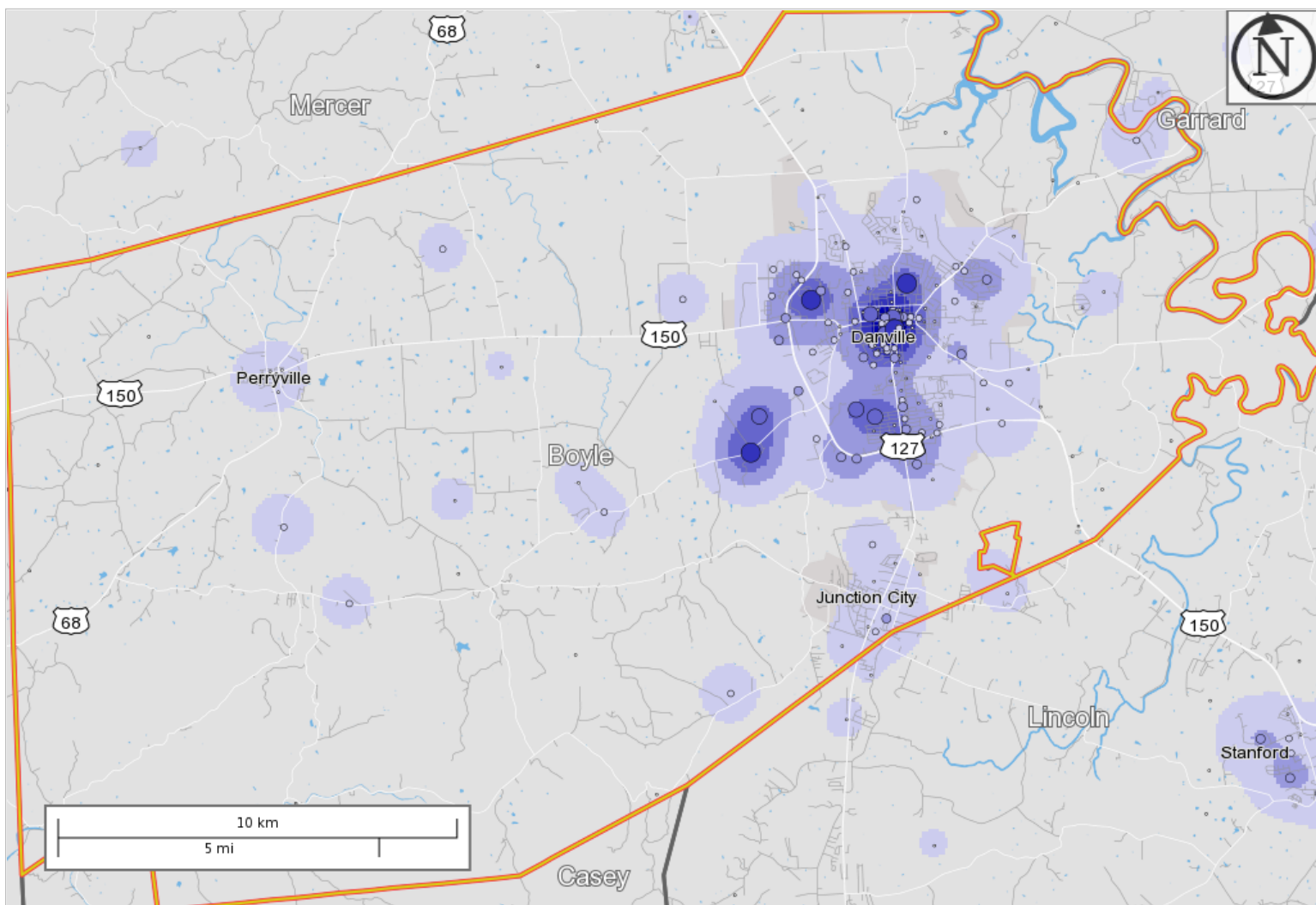


Distance/Direction Report - Home Census Block to Work Census Block

Boyle County, KY: Home to Work

Created by the U.S. Census Bureau's OnTheMap <http://onthemap.ces.census.gov> on 10/01/2018

Counts and Density of Work Locations for All Jobs in Home Selection Area in 2015 All Workers



Map Legend

Job Density [Jobs/Sq. Mile]

- 5 - 128
- 129 - 500
- 501 - 1,120
- 1,121 - 1,988
- 1,989 - 3,104

Job Count [Jobs/Census Block]

- 1 - 5
- 6 - 34
- 35 - 114
- 115 - 270
- 271 - 528

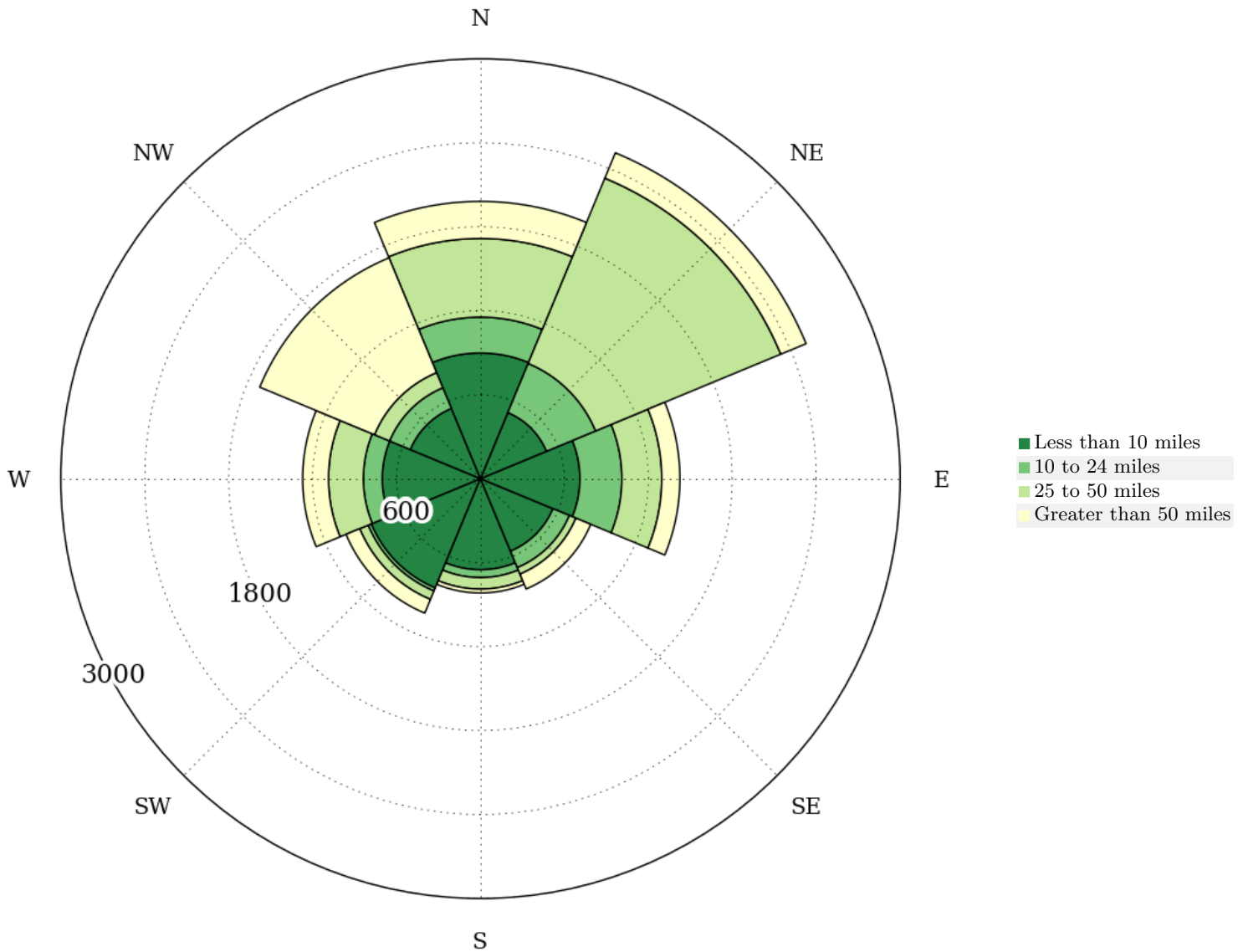
Selection Areas

- Analysis Selection



All Jobs for All Workers in 2015

Distance and Direction from Home Census Block to Work Census Block, Living in Selection Area



All Jobs for All Workers in 2015

Distance from Home Census Block to Work Census Block, Living in Selection Area

Distance	2015	
	Count	Share
Total All Jobs	11,616	100.0
Less than 10 miles	5,422	46.7
10 to 24 miles	1,438	12.4
25 to 50 miles	2,843	24.5
Greater than 50 miles	1,913	16.5

Additional Information

Analysis Settings

Analysis Type	Distance/Direction
Selection area as	Home
Year(s)	2015
Job Type	All Jobs
Selection Area	Boyle County, KY from Counties
Selected Census Blocks	1,109
Analysis Generation Date	10/01/2018 14:21 - OnTheMap 6.5
Code Revision	d6ec994dcb416ba9b4b1b8cb2b4d690f01609fc9
LODES Data Version	20160219

Data Sources

Source: U.S. Census Bureau, OnTheMap Application and LEHD Origin-Destination Employment Statistics (Beginning of Quarter Employment, 2nd Quarter of 2002-2015).

Notes

1. Race, Ethnicity, Educational Attainment, and Sex statistics are beta release results and are not available before 2009.
2. Educational Attainment is only produced for workers aged 30 and over.
3. Firm Age and Firm Size statistics are beta release results for All Private jobs and are not available before 2011.