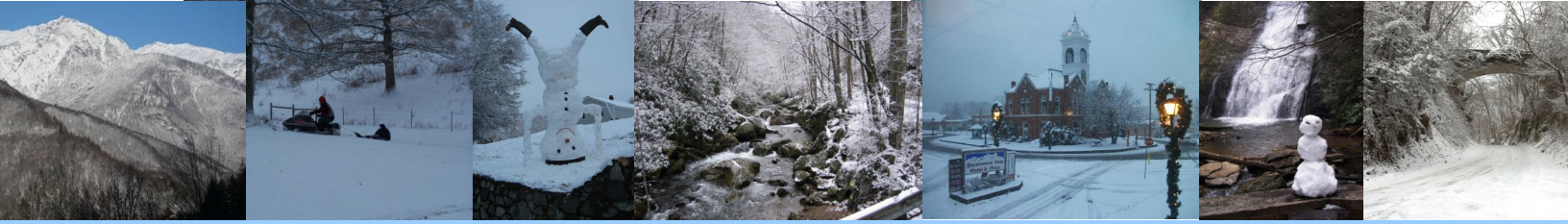


# BLAIRSVILLE - UNION COUNTY ITINERARY

## *Winter - Romance*



*Located deep in the heart of the Chattahoochee National Forest amidst North Georgia's Blue Ridge Mountains, Blairsville-Union County offers four distinct seasons, each with different colors and landscapes – and different reasons to visit.*  
***“Each Season Something New”***

### ***Coffee for Two***

*Sip a cup of your favorite joe at one of our cozy coffee shops or delicious full menu restaurants.*

### ***Cuddle By the Fire***

*Read a book by the giant fireplace at Copperhead Lodge ( 135 Nottely Dam Road / 706-745-8000) or plan to roast marshmallows over an open flame at Southern Tree Plantation ( 2226 Owltown Road / 706-745-0601).*

### ***Relax A While***

*Book a couples massage at one of our many luxurious spas.*

### ***Propose a Toast***

*Visit the tasting room at our local craft beer shop or one of many local wineries. Here's to the two of you!*

### ***Make a Wish Under the Stars***

*There's no better place to take in the beautiful mountain sky than from Georgia's highest peak - Brasstown Bald (Georgia Highway 180 / 706-896-2556).*

### ***Catch a Movie***

*Rent a movie for your cabin or spend the evening enjoying the latest flick at the local cinema (38 Backyard Lane / 706-745-1000).*

***Seasonal Tip:*** *Snow transforms the mountains into a winter wonderland - a perfect time for a romantic mountain cabin getaway.*

***Festival Fun:*** *Catch the Mistletoe Market and Sugar Plum Tearoom the third weekend in November, the annual Christmas Parade the first Saturday in December, or head to Vogel State Park in mid December for their Christmas Tree Lighting with caroling, hayrides, bonfires, hot chocolate and cider!*