

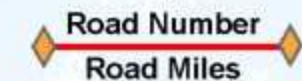
Welcome Atkisson Sno-Park Groomed Trail System

Winter 2007 / 2008

Explanation

-  Sno-Park
-  Groomed Snowmobile Trail
-  Groomed Ski Trail
-  Marked Ski Route
-  Major Junction, labeled with club #'s
-  Restroom
-  View
-  Highway
-  Sno-Park Access Road
-  Road
-  Wilderness Area
-  Gifford Pinchot National Forest

Area has 154 miles of groomed snowmobile trails. Road # and mileage labeled between junctions.



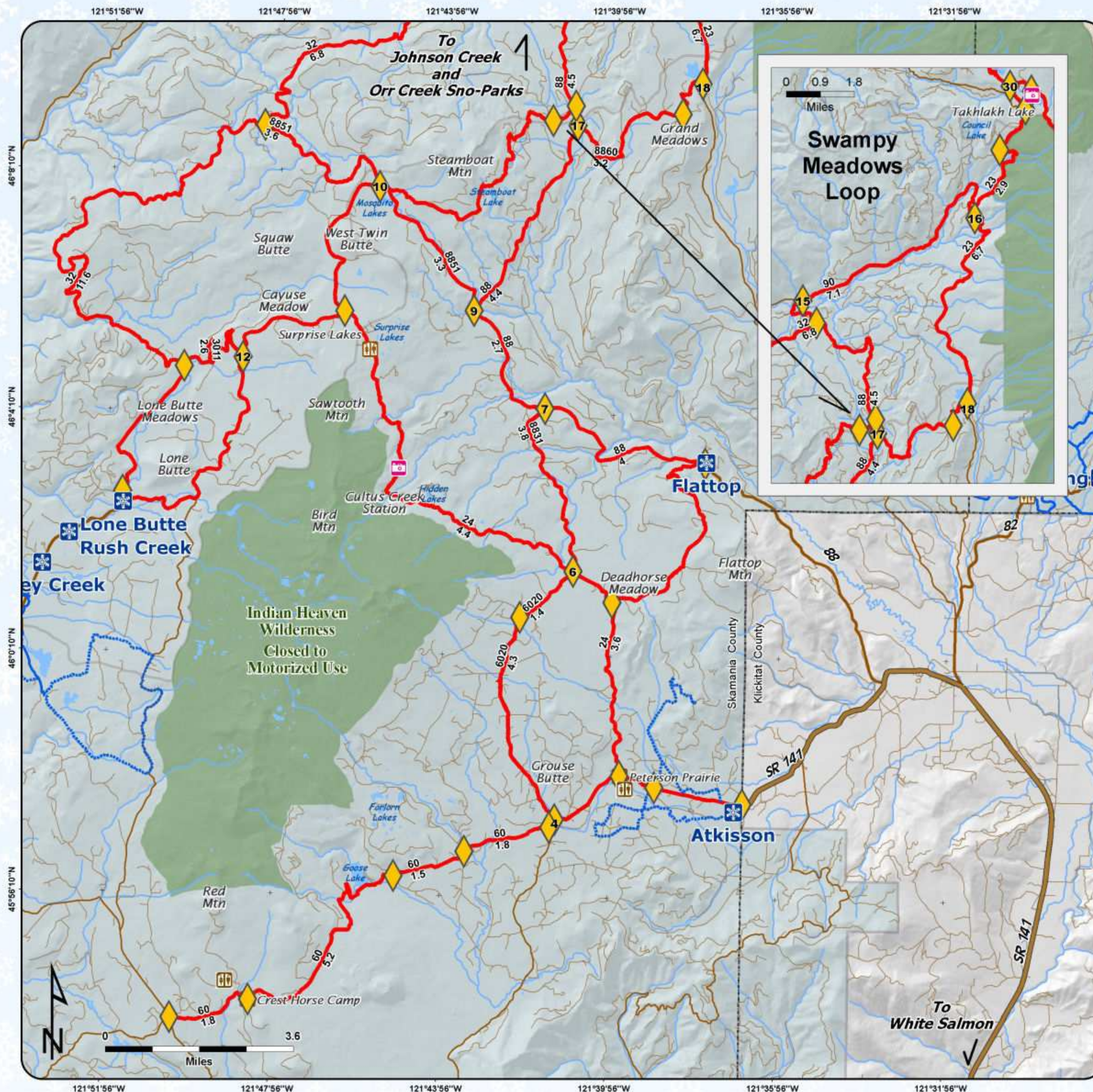
Snow grooming equipment may be on the trail at any time.

Trail grooming schedules may change without notice due to snow conditions, temperatures, equipment breakdowns, etc.




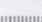
Be aware of potential avalanche danger, check www.nvac.us before you leave home.

*Trail grooming schedules and maps at www.parks.wa.gov/winter
Please report errors or comments to: winter@parks.wa.gov*

**For Emergency Call 911
Skamania Co. Sheriff 509-427-9490**



Map Legend

-  Sno*park
-  Access Road
-  Ungroomed Ski Trail
-  Groomed snowmobile route
- Road 24 Forest Road number
- 0.7 M Distance between stars in miles
- Elev. 3200' Elevation

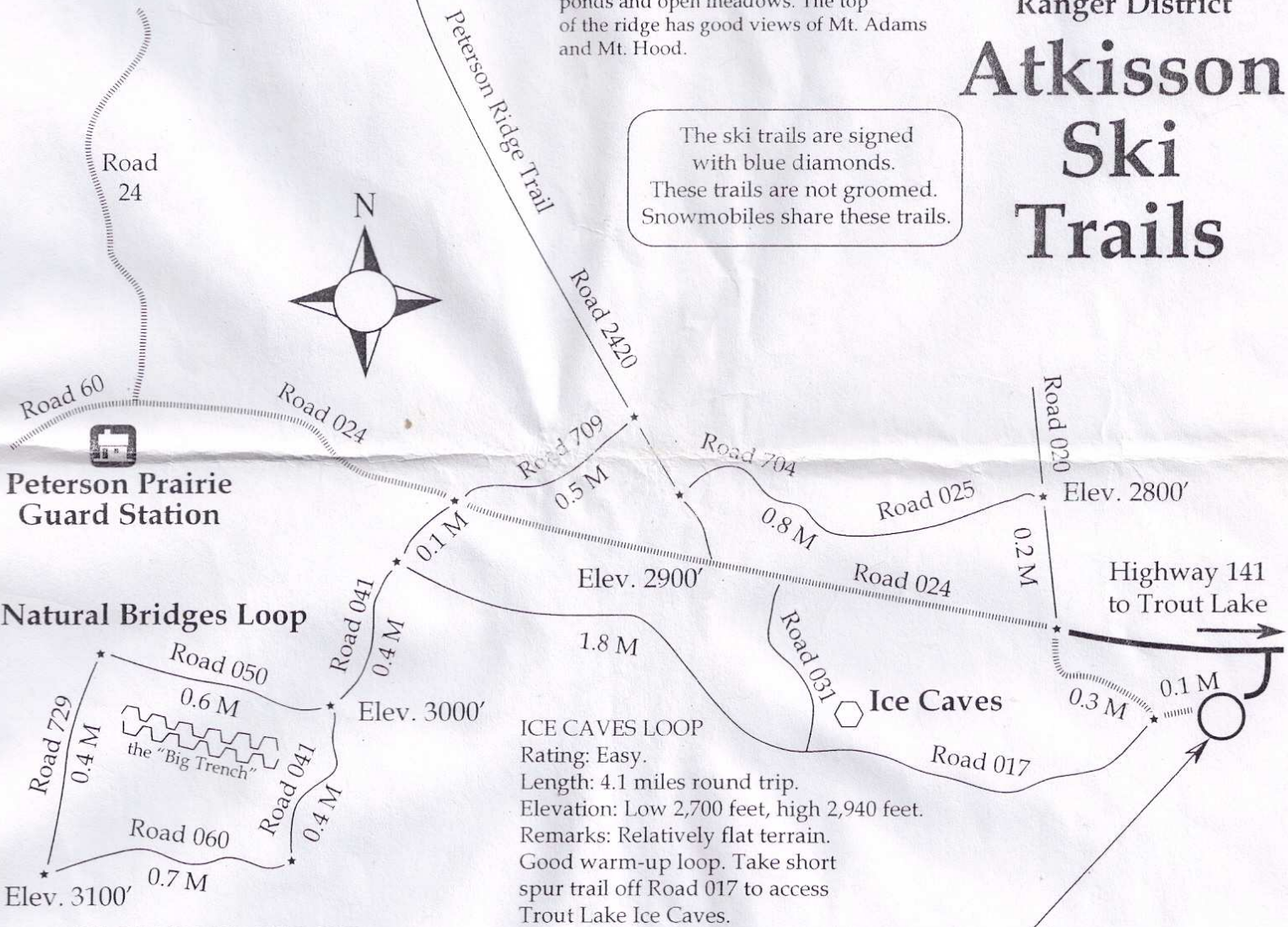


**Gifford Pinchot
National Forest**
Mt. Adams
Ranger District

Atkisson Ski Trails

PETERSON RIDGE TRAIL
Rating: More difficult.
Length: 10.6 miles round trip.
Elevation: Low 2,700 feet, high 3,800 feet.
Remarks: From north side of Ice Caves Loop, take Road 2420 up to Peterson Ridge. You may see elk among beaver ponds and open meadows. The top of the ridge has good views of Mt. Adams and Mt. Hood.

The ski trails are signed with blue diamonds. These trails are not groomed. Snowmobiles share these trails.



**Peterson Prairie
Guard Station**

Natural Bridges Loop

NATURAL BRIDGES LOOP
Rating: More difficult.
Length: 6.7 miles round trip via Road 017.
Elevation: Low 2,700 feet, high 3,100 feet.
Remarks: Follow Road 017 and 041 to loop around Big Trench, a collapsed lava tube with several natural bridges. Stay well away from edge of trench, especially when icy.

ICE CAVES LOOP
Rating: Easy.
Length: 4.1 miles round trip.
Elevation: Low 2,700 feet, high 2,940 feet.
Remarks: Relatively flat terrain. Good warm-up loop. Take short spur trail off Road 017 to access Trout Lake Ice Caves.

ATKISSON SNO*PARK
ACCESS: WA State Route 141 north to end, left on Forest Road 1700-011.
ELEVATION: 2,700 feet.
FACILITIES: Paved parking for 30 cars, toilets, shelter with wood stove, bulletin board.

Original map 02_02_2006
Revised 01_08_2007

