

East Side Ski Trails

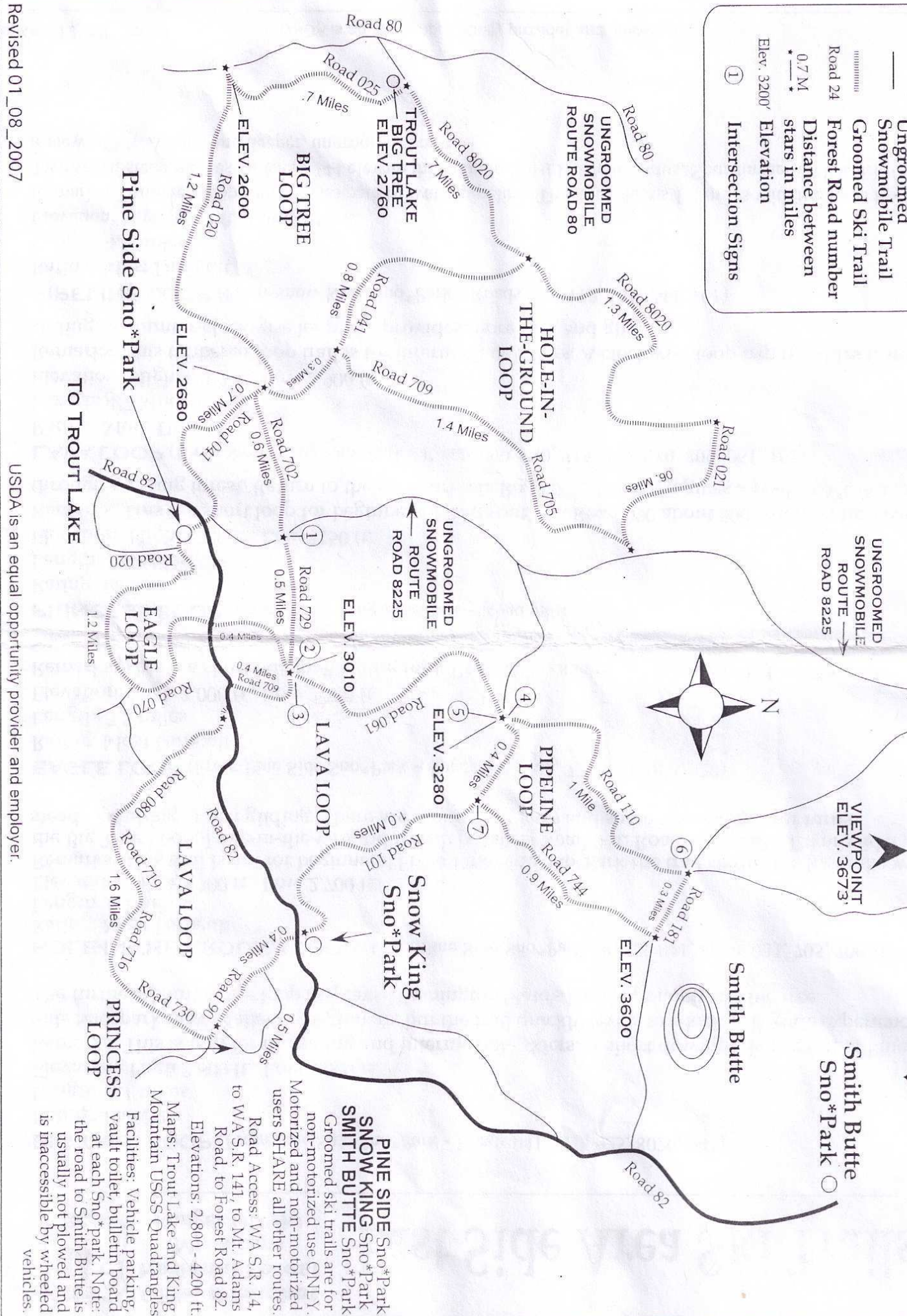


**Gifford Pinchot
National Forest**
Mt. Adams
Ranger District

Smith Butte
Sno*Park

Map Legend

- Sno*park
- Access Road
- Ungroomed Snowmobile Trail
- Groomed Ski Trail
- Road 24 Forest Road number
- 0.7 M Distance between starts in miles
- Elev. 3200' Elevation
- Intersection Signs



Revised 01_08_2007

USDA is an equal opportunity provider and employer.

PINE SIDE Sno*Park
SNOW KING Sno*Park
SMITH BUTTE Sno*Park
Groomed ski trails are for non-motorized use ONLY. Motorized and non-motorized users SHARE all other routes.
Road Access: WA S.R. 14, to WA S.R. 141, to Mt. Adams Road, to Forest Road 82.
Elevations: 2,800 - 4200 ft
Maps: Trout Lake and King Mountain USGS Quadrangles
Facilities: Vehicle parking, vault toilet, bulletin board at each Sno*park. Note: the road to Smith Butte is usually not plowed and is inaccessible by wheeled vehicles.

East Side Area Ski Trails

Gifford Pinchot National Forest Mt. Adams Ranger District

BIG TREE LOOP (From Pine Side Sno*Park - Roads 041,020, 025,8020,041)

Rating: Easiest

Length: 5.1 miles

Elevation: High 2,800 ft., Low 2,600 ft.

Remarks: This is trail for beginning and intermediate skiers. A short downgrade just out of Pine Side Sno*park may challenge beginners, but the trail quickly levels to a kick and glide experience. The furthest point in the loop displays Washington State's largest ponderosa pine tree.

HOLE-IN-THE-GROUND LOOP (From Pine Side Sno*Park - Roads 041,8020,021,705,709,041)

Rating: Most Difficult

Length: 6.1 miles

Elevation: High 3,300 ft., Low 2,700 ft.

Remarks: This trail is not for beginners! From Pine Side Sno*Park the trail shares the first mile with the Big Tree Loop. Hole-in-the-Ground trench parallels Road 041. Roads 709 and 8020 provide steady climbing or fast gliding, There are mountain views and some open slopes for turns.

EAGLE LOOP (From Pine Side Sno*Park - Roads 041, 702, 729, 061, 070, 020)

Rating: Most Difficult

Length: 3.3 miles

Elevation: High 3,000 ft., Low 2,700 ft.

Remarks: This is a short but challenging trail Road 702 is steep, as is the drop below Pine Side Sno-Park to Road 020.

PRINCES, S LOOP (From Snow King Sno*Park - Road 090)

Rating: Easiest

Length: 1.0 Miles

Elevation: High 3,200 ft., Low 3250 ft.

Remarks: This is a short loop for beginners. Head south on Road 090 about 500 feet then turn east through a young forest. Return to the sno*park via Road 090. This loop gives a peek a! Mt. Adams.

LAVA LOOP (From Snow King Sno*Park - Roads 090, 730, 716,719, 080, 709, 061,101)

Rating: More Difficult

Length: 4.7 Miles

Elevation: High 3,300 ft., Low 2,900 ft.

Remarks: This timbered loop trail is for intermediate skiers: A clockwise loop trip provides faster sliding. A counter-clockwise loop trip provides more kick and glide.

PIPELINE LOOP (From Snow King Sno*Park - Roads 101, 110, 181, 744, 101)

Rating: Most Difficult

Length: 4.5 miles

Elevation: High 3,600 ft., Low 3,200 ft.

Remarks: Timbered loop trail crosses path of water pipeline. This trail shares 1.4 miles with the Lava Loop. Two short, steep pitches on Road 744 elevate this loop to Most Difficult status. Spur further up Road 110 for a view of Mt. Adams and deeper, ungroomed snow.

Welcome Pineside Sno-Park Groomed Trail System

Winter 2007 / 2008

Explanation

- Non-Motorized Sno-Park
- Motorized Sno-Park
- Groomed Ski Trail
- Access Road
- Major Forest Road
- Road
- Gifford Pinchot National Forest



**Eastside Trail System
has 28 kilometers (17 miles) of
groomed cross country ski trails.**

Road Number
Kilometers

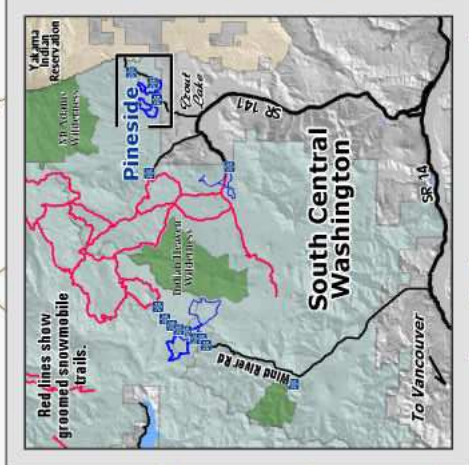
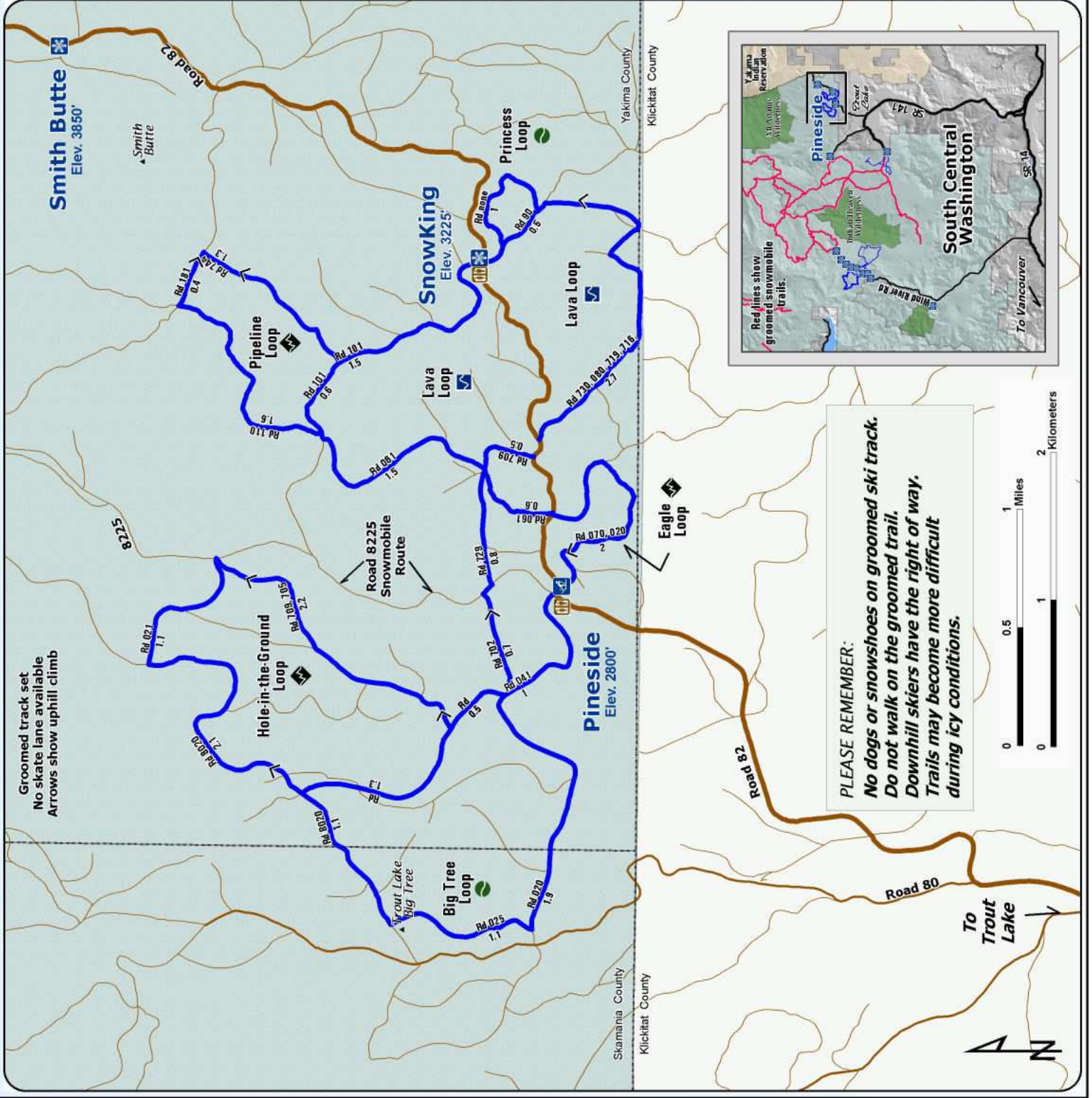
*Snow grooming equipment may
be on the trail at any time.*

*Trail grooming schedules may change
without notice due to snow conditions,
temperatures, equipment breakdowns, etc.*

*Be aware of potential avalanche danger,
check www.nwac.us before you leave home.*

*Trail grooming schedules and maps at
www.parks.wa.gov/winter
Please report errors or comments to:
winter@parks.wa.gov*

**For Emergency Call 911
Yakima Co. Sheriff 509-574-2500
Skamania Co. Sheriff 509-427-9490**



PLEASE REMEMBER:
No dogs or snowshoes on groomed ski track.
Do not walk on the groomed trail.
Downhill skiers have the right of way.
Trails may become more difficult during icy conditions.

