

Uinta County Economic Development Commission



Communities:

**Evanston, 307-783-6300
evanstonwy.org**

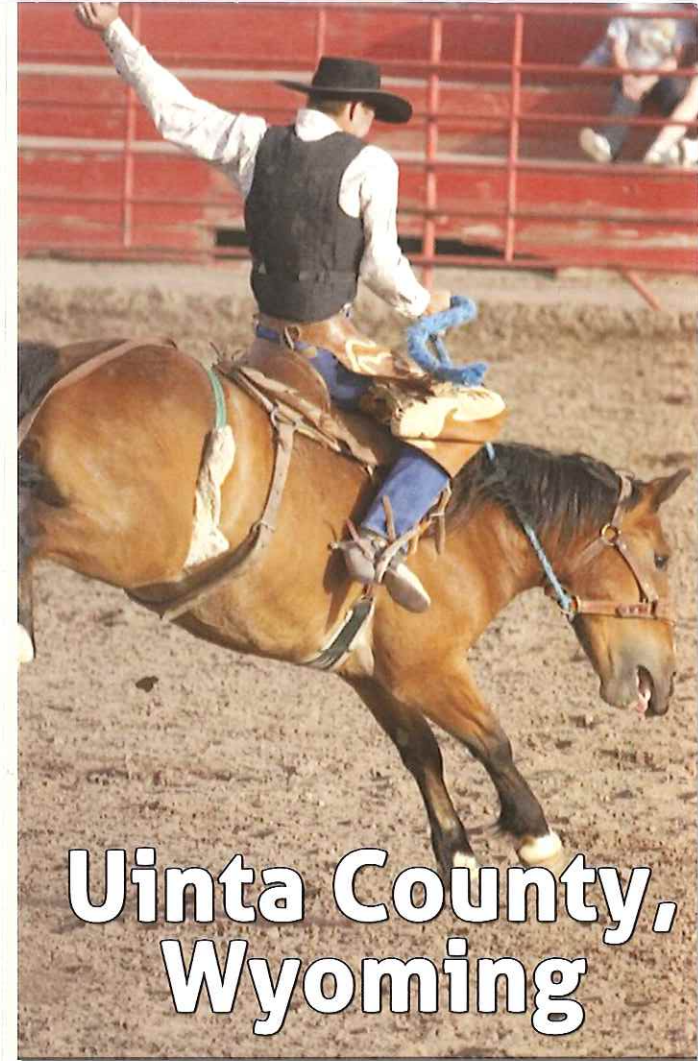
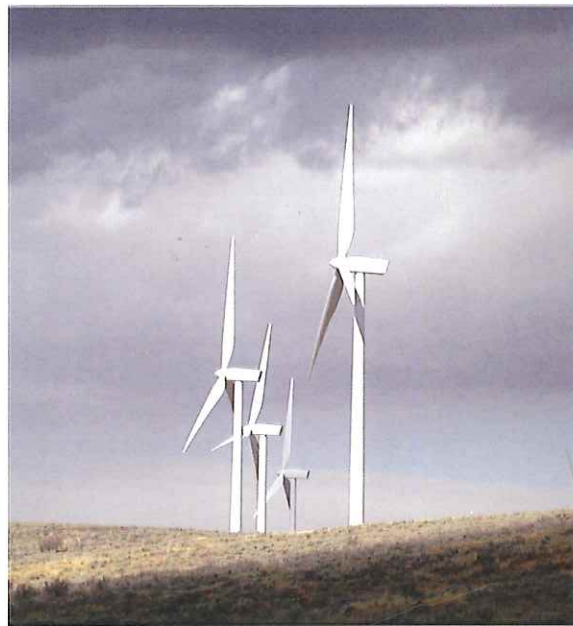
**Lyman, 307-787-6595
lymanwy.com**

**Mountain View, 307-782-3100
mountainviewwyoming.net**

**Bear River, 307-789-2800
townofbearriver.com**



Uinta County, 307-783-0318
Find More Information Online!
UintaCounty.com/Business



A Great Place

for ...

Business!

Recreation!

Life!

Reasons to Relocate ...



- Shovel-ready sites available
- Streamlined permitting process
- Pro-business (City/County/Chamber)
- Pre and post-hire training grants



- No corporate income tax
- No personal income tax
- No inventory tax
- Safe hometown atmosphere
- Good air & water quality
- Substantial Medical Services
- Small classroom sizes (teacher/student ratio)



Proximity to year-round recreation including hunting, fishing, winter sports, water sports, hiking, golfing & tourism hub



Take it from a business who has ...

“ In 1996, we searched the West for a site to construct a carbon fiber manufacturing facility. Among the many locations we looked at, Evanston was a standout. It had available land, low electricity rates, plenty of labor and the local representatives we talked to were very excited about our potential move. An added bonus was the tax structure, zero income tax and competitive property tax rates. We constructed the facility as the first to occupy the Union Center and have never been sorry. City personnel are still as friendly and willing to help as they were on the day we chose them. It has been a great place to live. ”

-Steve Russell, former CEO of SGL Carbon

- Transportation Corridor (I-80, Union Pacific Rail)
- One hour to Salt Lake City Metro Area & International airport

