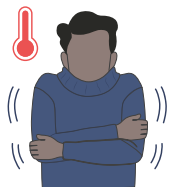


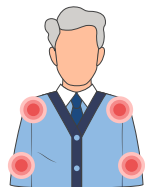
Please do not enter if you:

- have had any of the symptoms listed below in the past three days¹
- are a close contact of a person who tested positive for COVID-19 within the past 14 days²

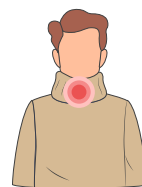
For the safety of our staff and guests, please **SELF SCREEN** for symptoms of COVID-19. Please do not enter if you have any of the following symptoms:¹



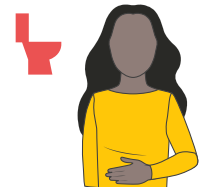
fever
or chills



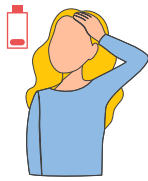
muscle or
body aches



sore throat or
runny/stuffy nose



headache, nausea,
vomiting or diarrhea



fatigue

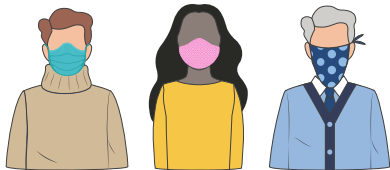


cough, shortness
of breath
or difficulty

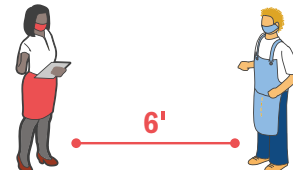


sudden loss of
taste or smell

RULES TO REMEMBER



When in public, wear a cloth face covering over your nose and mouth.



Stay at least six feet (about two arms' length) from other people.

¹You may enter if symptoms experienced can be explained by known allergies or non-infectious illnesses.

²Does not apply to people who come into contact with people with symptoms of COVID-19 during the course of their daily work while wearing full and appropriate personal protective equipment (PPE).

For questions or concerns, please call the Department of Business Regulation at 401-889-5550 or visit dbr.ri.gov/questioncomplaints/