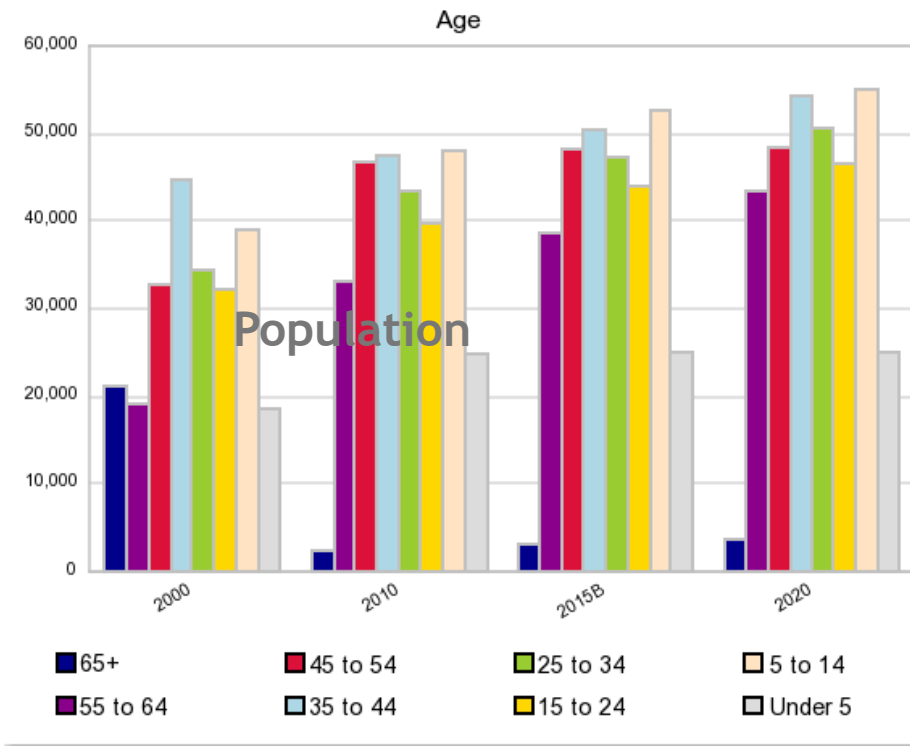


# Economic Profile

Brazoria County

# Population

The 2015B population estimate in this selected geography is 342,677. The 2010 Census revealed a population of 313,162, and in 2000 it was 241,745 representing a 29.5% change. It is projected the population in this area will be 370,861 in 2020, representing a change of 8.2% from 2015B. The current population is 50.8% male and 49.2% female. In 2015B, the median age of the population in this area was 35.5, compared to the Entire US median age which was 37.6. The population density in your area is 237.5 people per square mile.



## Age Groups

Age Groups	2000 Census		2010 Census		2015B Estimate		2020 Projection		Percent Change	
	Population	%	Population	%	Population	%	Population	%	2000 to 2010	2015 to 2020
0 to 4	18,424	7.6%	24,728	7.9%	24,986	7.3%	27,447	7.4%	34.2%	9.9%
5 to 14	38,897	16.1%	48,062	15.3%	52,682	15.4%	55,045	14.8%	23.6%	4.5%
15 to 19	18,048	7.5%	22,208	7.1%	23,084	6.7%	24,658	6.6%	23.0%	6.8%
20 to 24	14,064	5.8%	17,571	5.6%	20,984	6.1%	21,949	5.9%	24.9%	4.6%
25 to 34	34,575	14.3%	43,474	13.9%	47,256	13.8%	50,577	13.6%	25.7%	7.0%
35 to 44	44,759	18.5%	47,386	15.1%	50,449	14.7%	54,245	14.6%	5.9%	7.5%
45 to 54	32,645	13.5%	46,708	14.9%	48,383	14.1%	48,569	13.1%	43.1%	0.4%
55 to 64	19,059	7.9%	33,102	10.6%	38,681	11.3%	43,476	11.7%	73.7%	12.4%
65 to 74	12,860	5.3%	17,698	5.7%	22,024	6.4%	27,916	7.5%	37.6%	26.8%
75 +	8,415	3.5%	12,225	3.9%	14,149	4.1%	16,979	4.6%	45.3%	20.0%

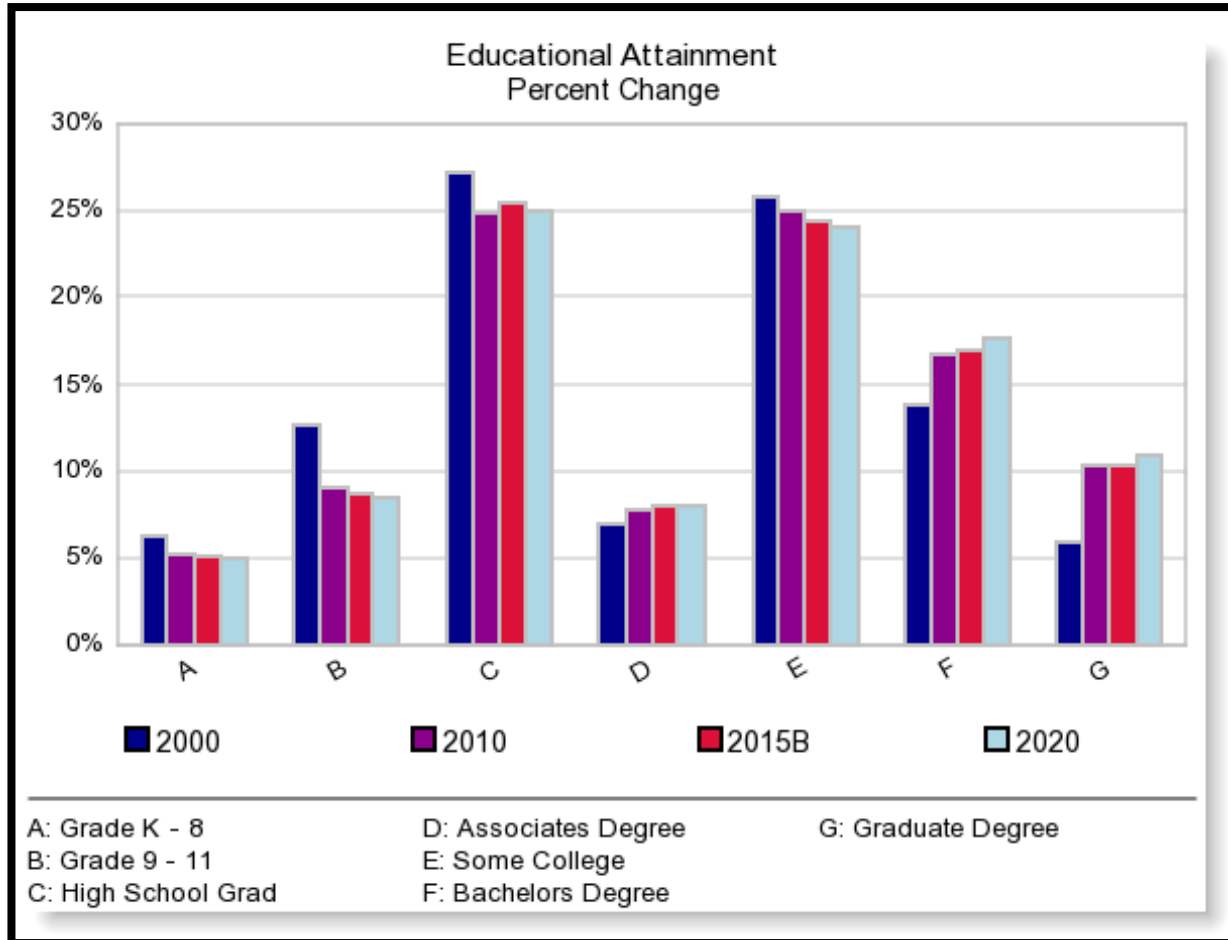
# Employment

Brazoria County					
	CLF	Employed	Unemployed	Rate	2015
Jan.	167,249	159,248	8,001	4.8	4.6
Feb.	167,822	160,167	7,655	4.6	4.3
Mar.	168,055	160,019	8,036	4.8	4.2
Apr.	167,470	159,712	7,758	4.6	4.0
May	167,349	159,511	7,838	4.7	4.1
June					4.4
July					4.6
Aug.					4.6
Sept.					4.6
Oct.					4.7
Nov.					4.8
Dec.					4.5
<b>Average</b>	<b>167,589</b>	<b>159,731</b>	<b>7,858</b>	<b>4.7</b>	<b>4.5</b>

Employment by Industry: Sorted Descending By Percent	
Manufacturing	17.99%
Construction	11.50%
Retail trade	10.28%
Health care and social assistance	9.45%
Educational services	8.68%
Public administration	5.28%
Professional scientific and technical services	5.19%
Other services (except public admin)	4.64%
Accommodation and food services	4.58%
Transportation and warehousing	4.18%
Wholesale trade	3.42%
Finance and insurance	3.34%
Administrative and support and waste management services	2.89%
Real estate and rental and leasing	1.96%
Information	1.79%
Mining	1.50%
Utilities	1.45%
Arts entertainment and recreation	1.13%
Agriculture forestry fishing and hunting	0.70%

	2000 Census		2010 Census		2015B Estimate		2020 Projection		Percent Change	
									2000 to 2010	2015B to 2020
\$0 - \$9,999	5,973	7.3%	5,069	4.8%	5,745	4.9%	4,480	3.5%	-15.1%	-22.0%
\$10,000 - \$14,999	4,243	5.2%	4,027	3.8%	4,614	4.0%	4,482	3.5%	-5.1%	-2.9%
\$15,000 - \$19,999	4,470	5.5%	4,850	4.6%	5,290	4.5%	4,823	3.8%	8.5%	-8.8%
\$20,000 - \$24,999	4,716	5.8%	4,452	4.2%	4,604	3.9%	4,395	3.5%	-5.6%	-4.5%
\$25,000 - \$29,999	4,757	5.8%	4,359	4.1%	4,819	4.1%	4,525	3.6%	-8.4%	-6.1%
\$30,000 - \$34,999	4,699	5.7%	4,442	4.2%	4,940	4.2%	4,628	3.6%	-5.5%	-6.3%
\$35,000 - \$39,999	4,802	5.9%	4,111	3.9%	4,408	3.8%	4,251	3.3%	-14.4%	-3.6%
\$40,000 - \$49,999	8,398	10.2%	8,286	7.8%	9,189	7.9%	8,726	6.9%	-1.3%	-5.0%
\$50,000 - \$59,999	7,757	9.5%	7,820	7.3%	8,441	7.2%	7,425	5.8%	0.8%	-12.0%
\$60,000 - \$74,999	10,010	12.2%	10,645	10.0%	11,050	9.5%	10,132	8.0%	6.3%	-8.3%
\$75,000 - \$99,999	11,051	13.5%	17,355	16.3%	17,738	15.2%	19,146	15.1%	57.0%	7.9%
\$100,000 - \$124,999	5,727	7.0%	13,186	12.4%	14,082	12.1%	18,609	14.7%	130.2%	32.1%
\$125,000 - \$149,999	2,509	3.1%	7,471	7.0%	7,952	6.8%	11,458	9.0%	197.8%	44.1%
\$150,000 +	2,910	3.6%	10,516	9.9%	13,938	11.9%	19,864	15.6%	261.4%	42.5%
Average Hhld Income	\$58,322		\$83,849		\$86,093		\$99,829		43.8%	16.0%
Median Hhld Income	\$48,701		\$68,164		\$68,458		\$82,546		40.0%	20.6%
Per Capita Income	\$19,770		\$28,946		\$29,712		\$34,508		46.4%	16.1%

# Education



	Brazoria County	Region
# of Two-Year Public Universities	1	23
# of Four-Year Public Universities	1	17
# of Two-Year Private Universities	0	20
# of Four-Year Private Universities	0	6
# of Public Libraries	12	140

# Transportation

Means of Transportation to Work	
Workers Age 16+	106,566
Bicycle	0.1%
Bus or trolley bus	0.2%
Carpooled	12.6%
Drove alone	82.9%
Ferryboat	0.0%
Motorcycle	0.2%
Other means	0.7%
Railroad	0.0%
Streetcar or trolley car	0.0%
Subway or elevated	0.0%
Taxicab	0.0%
Walked	1.1%
Worked at home	2.2%

Travel Time to Work	
Median Travel Time To Work in Minutes	24
0 to 5	2.7%
5 to 9	9.6%
10 to 14	12.1%
15 to 19	13.0%
15 to 24	13.0%
25 to 29	5.9%
30 to 34	14.6%
35 to 39	3.6%
40 to 44	4.2%
45 to 59	10.3%
60 to 89	6.4%
90 or more	2.5%
Worked at home	2.2%

## Major Highways:

State Highway 6  
State Highway 35  
State Highway 36  
State Highway 288

## Railroads:

BNSF and Union Pacific

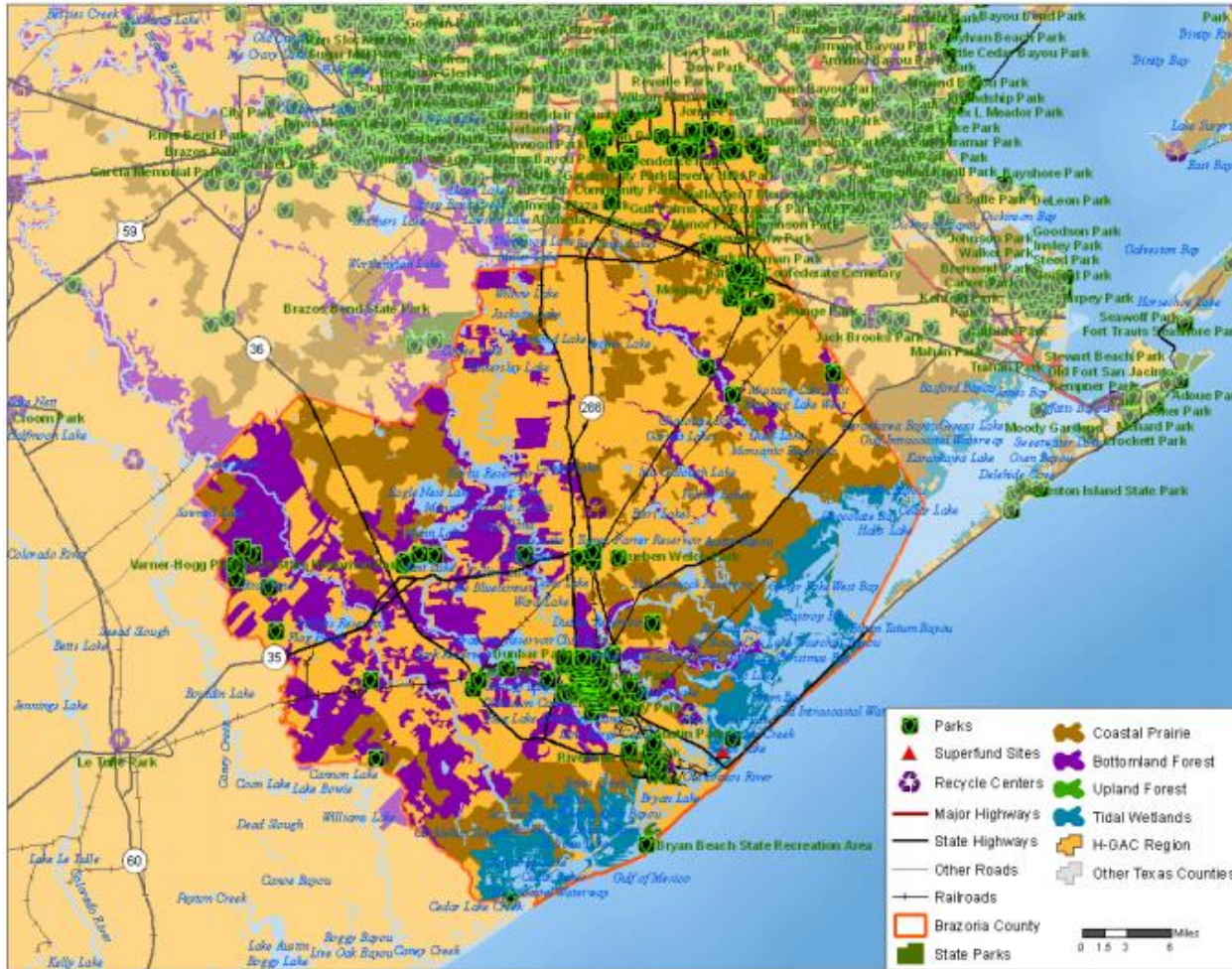
## Airports:

Texas Gulf Coast Regional Airport  
Pearland Regional Airport  
William P. Hobby Airport  
Bush Intercontinental Airport

## Port:

Port Freeport

# Environment



Attributes

## County Area and Climate

### Area:

1,597.44 Square Miles

### Land Area:

1,386.40 Square Miles

### Altitude:

Sea Level to 146 Feet Above Sea Level

### Average Annual Rainfall:

57.24 Inches

### January Average Minimum Temperature:

43.7° F

### July Average Maximum Temperature:

91.8° F