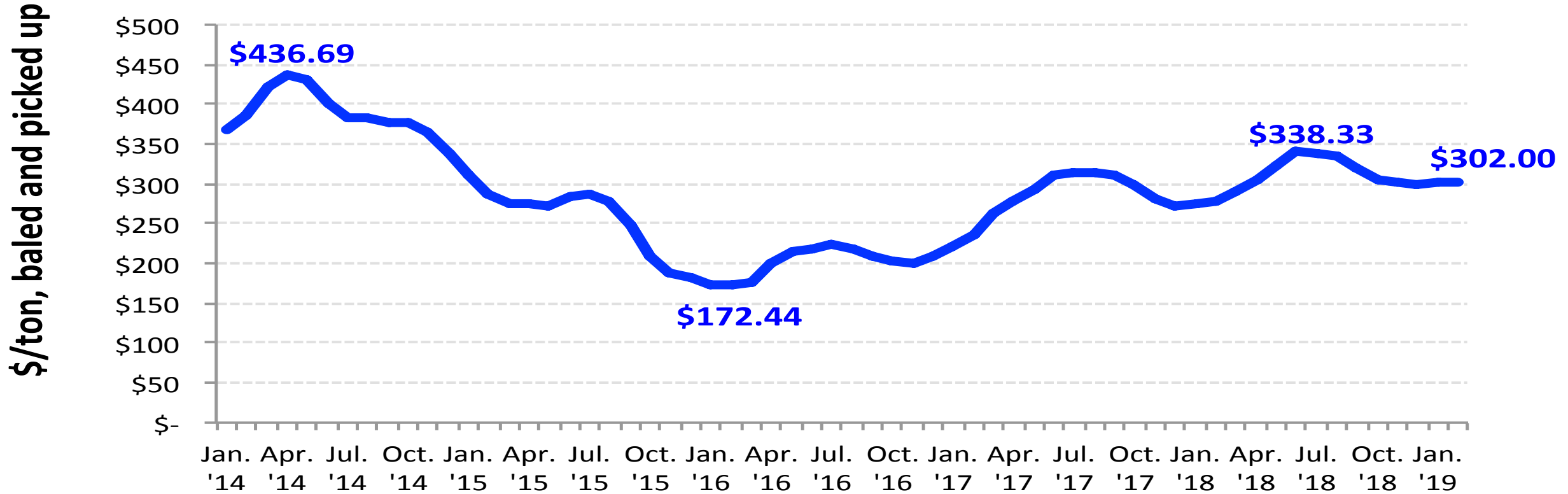


Deposit scrap is more valuable:

Single-stream curbside material: contaminated, low quality vs. clean, separated deposit material:

- **PET plastic from container deposit programs typically sells for 40% more than curbside PET**
- **Curbside glass *costs \$20/ton* to recycle—when markets can be found for it at all—versus deposit glass that has a *\$20/ton* scrap value.**

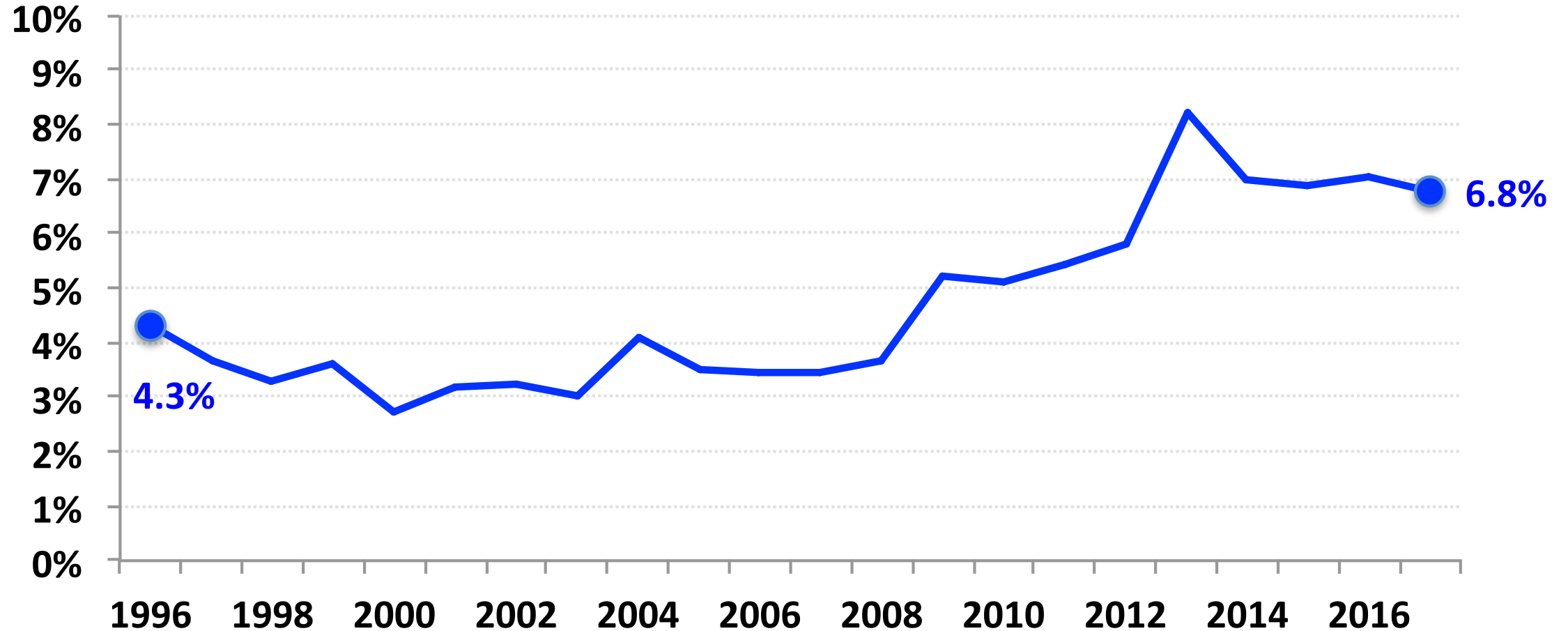
PET plastic bottle prices, national average Jan. 2014 - Jan. 2019



Source: Monthly national averages, historical commodity prices, RecyclingMarkets.net. Accessed 2-18-19.

© Container Recycling Institute, 2019

Clean Flake PET Used in Bottles, as a Percent of Resin Sold, 1996-2017



Data source: "Report on Postconsumer PET Container Recycling Activity in 2017." National Association of PET Container Resources (NAPCOR) and the Association of Plastic Recyclers (APR), Nov. 15, 2018.

rPET Content in Containers

US : 6%

EU : 14.6%

	EU	US
Collection Rate	59.8%	28.4%
Losses	3.5%	8.3%
Recycling Rate	56.3%	20.1%

Does PET sink or float?

