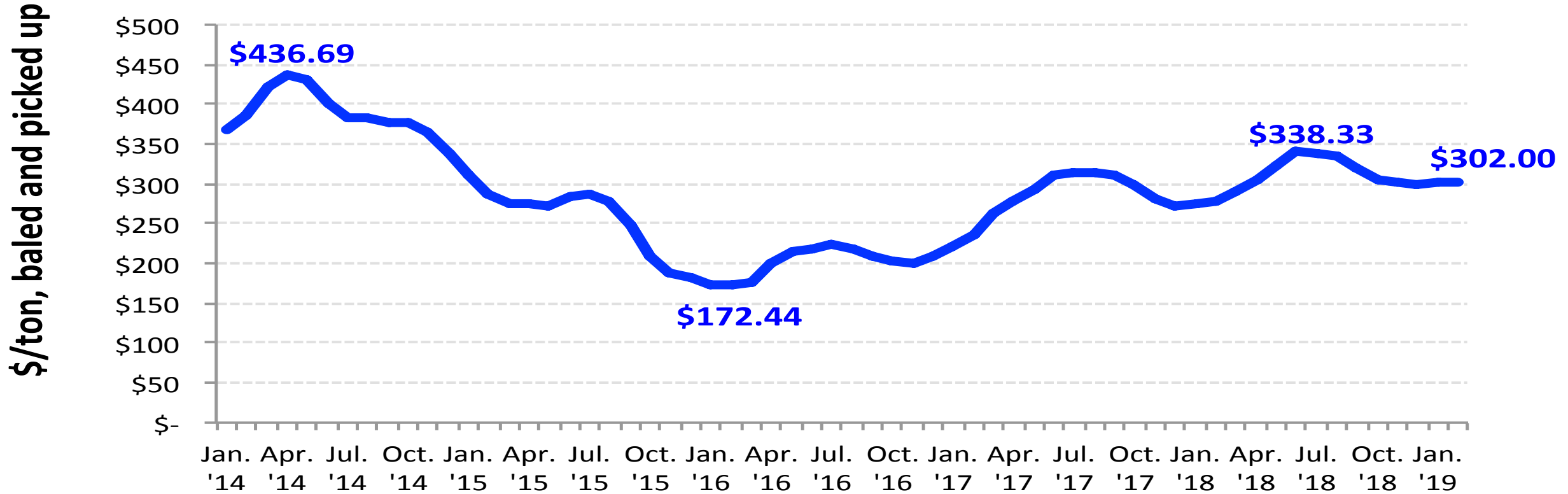


Deposit scrap is more valuable:

Single-stream curbside material: contaminated, low quality vs. clean, separated deposit material:

- **PET plastic from container deposit programs typically sells for 40% more than curbside PET**
- **Curbside glass *costs \$20/ton* to recycle—when markets can be found for it at all—versus deposit glass that has a *\$20/ton* scrap value.**

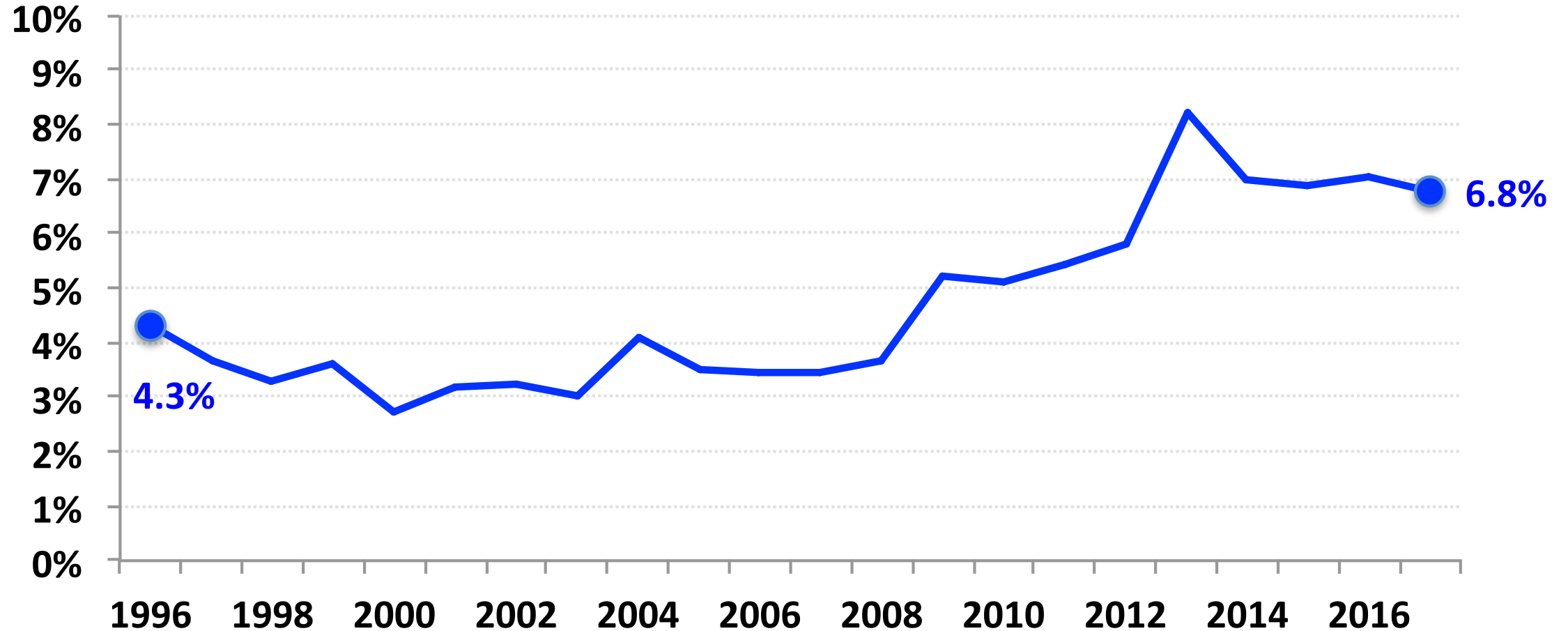
# PET plastic bottle prices, national average Jan. 2014 - Jan. 2019



Source: Monthly national averages, historical commodity prices, RecyclingMarkets.net. Accessed 2-18-19.

© Container Recycling Institute, 2019

# Clean Flake PET Used in Bottles, as a Percent of Resin Sold, 1996-2017



Data source: "Report on Postconsumer PET Container Recycling Activity in 2017." National Association of PET Container Resources (NAPCOR) and the Association of Plastic Recyclers (APR), Nov. 15, 2018.

# rPET Content in Containers

---

US : 6%

EU : 14.6%

	EU	US
Collection Rate	59.8%	28.4%
Losses	3.5%	8.3%
Recycling Rate	56.3%	20.1%

Does PET sink or float?

